

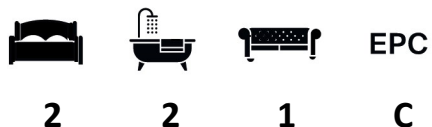


Church Row, London NW3 6UR

WAYNE  
& SILVER

## Church Row, London NW3 6UR

An exceptional lower ground floor apartment in the heart of Hampstead Village offers two double bedrooms and two bathrooms. The modernised interior includes an open-plan living/kitchen area, a master bedroom with an en suite bathroom, and a second double bedroom with a separate family bathroom. Situated in the coveted Gardnor Mansions on Church Row, this residence is ideally positioned for convenient access to the charming shops, cafes, boutiques, and transportation links in Hampstead Village.



**Guide price:** £3,000 Per Month

**Local Authority:** Camden

**Council Tax Band:** D







WAYNE  
& SILVER





WAYNE  
& SILVER

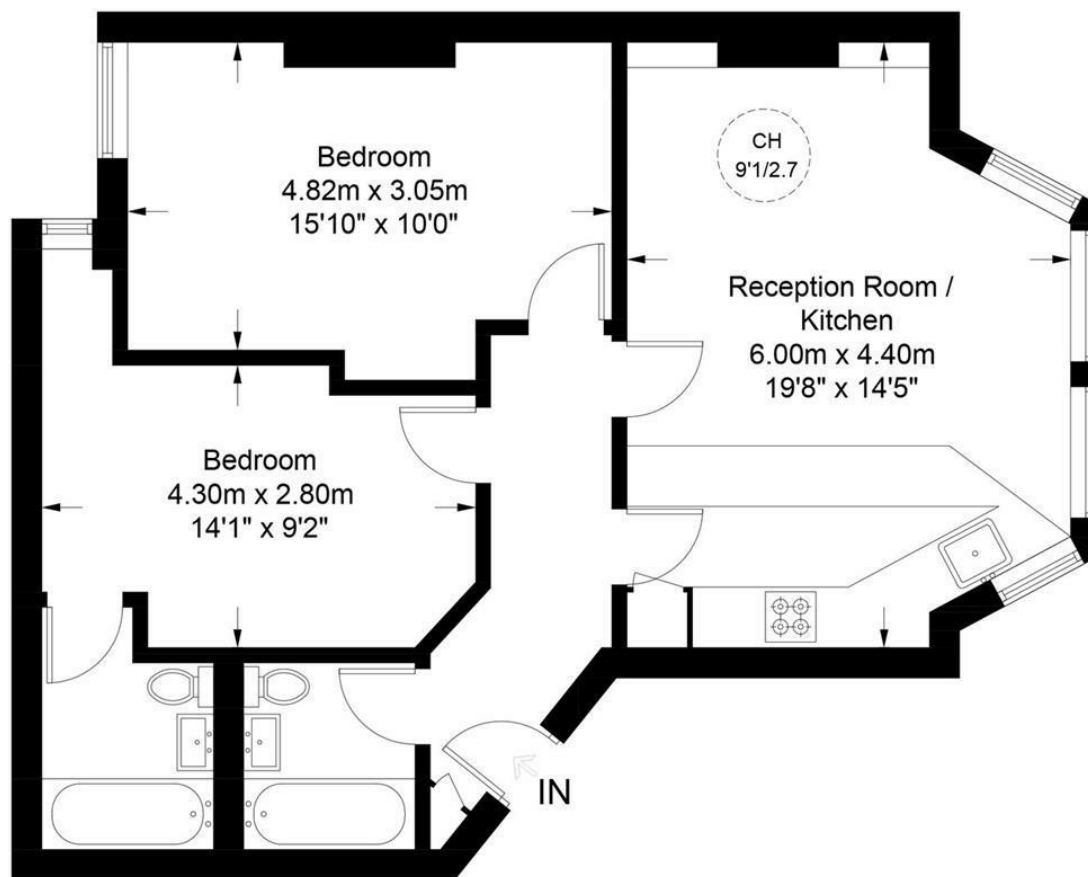






## Gardnor Mansions, NW3

Approximate Gross Internal Area = 711 sq ft / 66.1 sq m



### Lower Ground Floor



**Certified  
Property  
Measurer**

This plan is for layout guidance only. Not drawn to scale unless stated. Windows and door openings are approximate. Whilst every care is taken in the preparation of this plan, please check all dimensions, shapes and compass bearings before making any decisions reliant upon them. (ID951325)

41 Heath Street  
Hampstead  
London  
NW3 6UA

We would be delighted to tell you more  
020 7431 4488  
[info@wayne-silver.com](mailto:info@wayne-silver.com)

[wayne-silver.com](http://wayne-silver.com)