



Clorane Gardens, Hampstead, London NW3 7PR

WAYNE
& SILVER

Clorane Gardens, Hampstead, London NW3 7PR

Offering approximately 4,433 sq. ft of well-appointed internal accommodation. Ideal for families, this impressive six-bedroom residence combines elegant proportions with versatile living spaces, all presented in excellent decorative order throughout.

A wide entrance hallway provides a grand welcome and leads into a substantial 36-foot double reception room with nearly 10-foot ceiling heights, creating a sense of volume and light. This space flows seamlessly into a glazed breakfast area and a 28-foot eat-in kitchen, with access to the rear garden.

The upper floors are thoughtfully configured to provide a luxurious principal suite comprising a spacious bedroom, dedicated dressing room, and en-suite bathroom, alongside a study or sixth bedroom. A guest suite with its own en suite, three further double bedrooms, and two additional bathrooms (one en suite) complete the upper-level accommodation.

The garden level provides further flexible living space, ideal for creating a self contained suite or an additional (seventh) bedroom. This floor includes a media room, gym room, music room, shower room and utility/plant room.

Additionally, the property boasts a generous landscaped rear garden and the convenience of off street parking for one vehicle at the front.

Clorane Gardens is a beautiful residential turning located in Hampstead, located within close proximity of the many amenities of Hampstead.



6



5



4

EPC

D

Guide price: £4,375,000

Tenure: Freehold

Local Authority: Camden

Council Tax Band: H















Clorane Gardens, NW3

Approximate gross internal area

411.83 sq m / 4433 sq ft

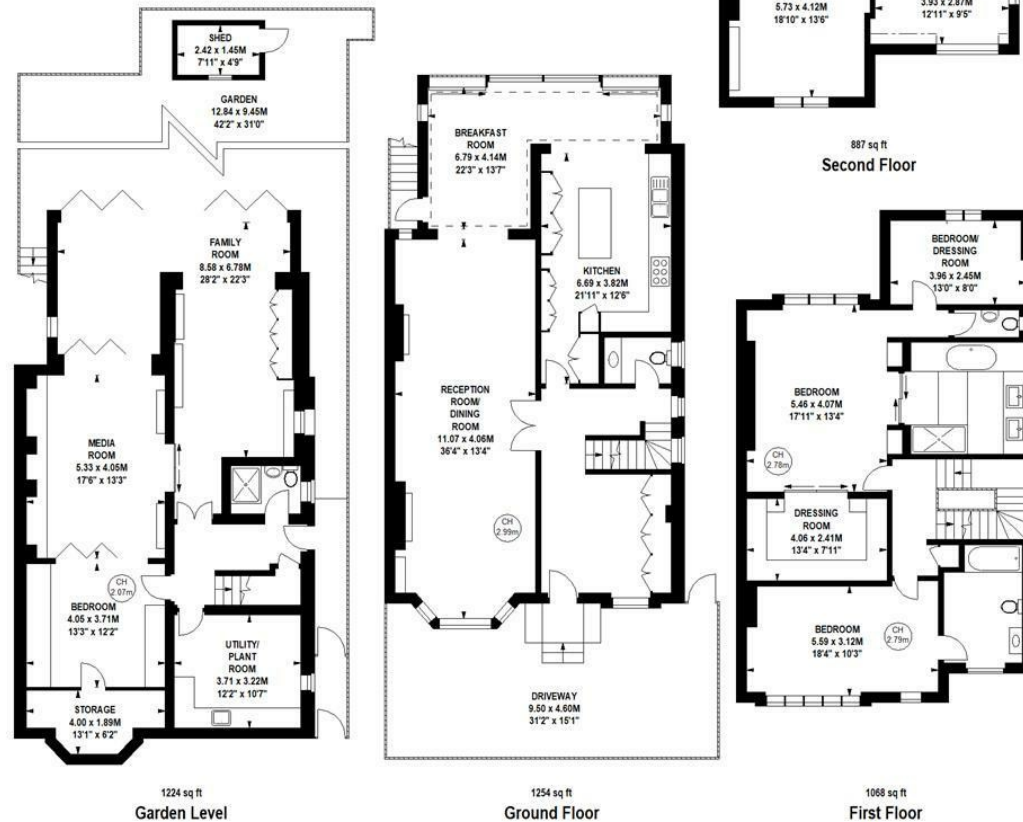
(Excluding Shed)

Shed

3.44 sq m / 37 sq ft

WAYNE
& SILVER

Key:
CH - Ceiling Height



Although every attempt has been made to ensure accuracy, all measurements are approximate.
This floorplan is for illustrative purposes only and not to scale.
Measured in accordance with RICS standards.

41 Heath Street
Hampstead
London
NW3 6UA

We would be delighted to tell you more
020 7431 4488
info@wayne-silver.com

wayne-silver.com

Important Notice: Wayne & Silver, its clients and any joint agents give notice that 1: They are not authorised to make or give any representations or warranties in relation to the property either here or elsewhere, either on their own behalf or on behalf of their client or otherwise. They assume no responsibility for any statement that may be made in these particulars. These particulars do not form part of any offer or contract and must not be relied upon as statements or representations of fact. 2: Any areas, measurements or distances are approximate. The text, photographs and plans are for guidance only and are not necessarily comprehensive. It should not be assumed that the property has all necessary planning, building regulation or other consents and Wayne & Silver have not tested any services, equipment or facilities. Purchasers must satisfy themselves by inspection or otherwise.