



Fitzjohns Avenue, London NW3 6PH

**WAYNE
& SILVER**

Fitzjohns Avenue, London NW3 6PH

A beautifully presented lateral apartment set on the ground floor of an elegant period conversion, ideally located in the heart of Hampstead. This charming home has been finished to a high specification throughout and offers approximately 560 square feet of well-appointed living space.

The accommodation comprises a generously sized double bedroom complete with bespoke built-in wardrobes and a stylish en-suite shower room. In addition, there is a separate guest cloakroom for added convenience. The bright and spacious open-plan kitchen and reception area provides an ideal space for both entertaining and everyday living, featuring modern fittings and a thoughtfully designed layout.

Further benefits include access to a stunning landscaped communal garden, offering a peaceful and picturesque outdoor retreat. This delightful property effortlessly combines period charm with contemporary living and is located within easy reach of Hampstead Village, local amenities, and excellent transport links.



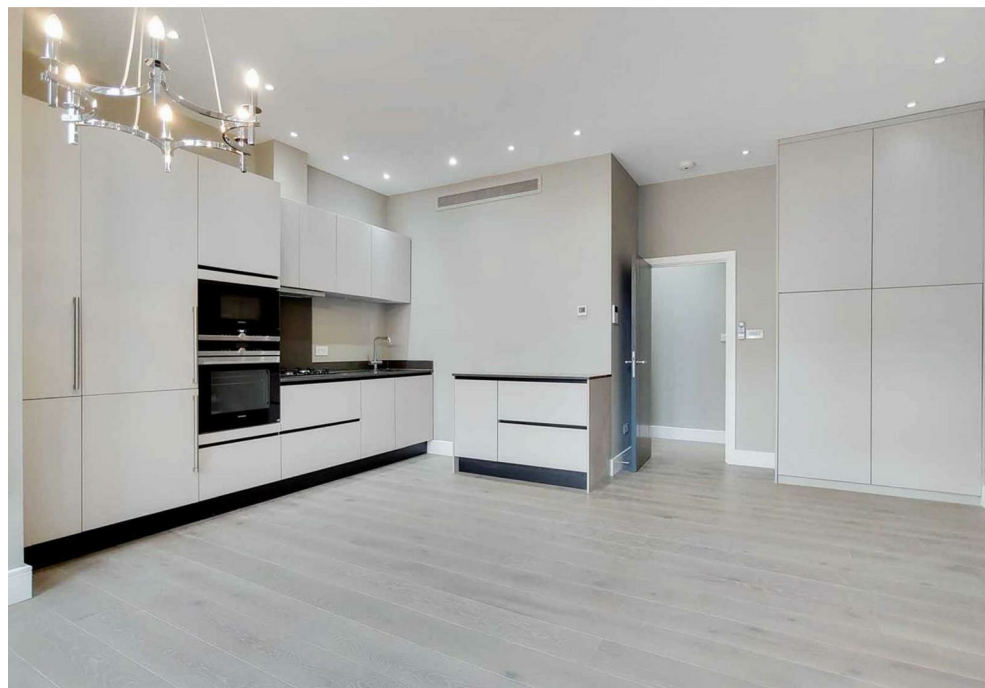
Guide price: £3,011 Per Month

Tenure:

Service Charge: Add text here

Local Authority:

Council Tax Band: New Build











| | | | |
|---|---|--|---|
|  <small>GROSS INTERNAL AREA (GIA)</small> <small>The finished area of the property</small> 51.96 sqm / 559.29 sqft |  <small>NET INTERNAL AREA (NIA)</small> <small>Excludes walls and external features</small> <small>Includes balconies, restricted head height</small> 49.68 sqm / 534.75 sqft |  <small>EXTERNAL STRUCTURAL FEATURES</small> <small>Balconies, terraces, verandas etc.</small> 0.00 sqm / 0.00 sqft |  <small>RESTRICTED HEAD HEIGHT</small> <small>Unfinished areas under 1.8m</small> 0.00 sqm / 0.00 sqft |
|---|---|--|---|

| | | | |
|---|---|---|---|
|  |  | <small>spec Verified floor plans are produced in accordance with Royal Institution of Chartered Surveyors' Property Measurement Standards. Plots and gardens are illustrative only and excluded from all area calculations. Due to rounding, numbers may not add up precisely. All measurements shown for the individual room lengths and widths are the maximum points of measurements captured in the scan.</small> | <small>THIS SCHEMESHOWNAL 54.18 sqm / 583.30 sqft</small> <small>THIS SCHEMESHOWNAL 52.58 sqm / 567.77 sqft</small> <small>spec ID: SF35Dc07fe290d0e068b5</small> |
|---|---|---|---|

41 Heath Street
Hampstead
London
NW3 6UA

We would be delighted to tell you more
020 7431 4488
info@wayne-silver.com

wayne-silver.com

Important Notice: Wayne & Silver, its clients and any joint agents give notice that 1: They are not authorised to make or give any representations or warranties in relation to the property either here or elsewhere, either on their own behalf or on behalf of their client or otherwise. They assume no responsibility for any statement that may be made in these particulars. These particulars do not form part of any offer or contract and must not be relied upon as statements or representations of fact. 2: Any areas, measurements or distances are approximate. The text, photographs and plans are for guidance only and are not necessarily comprehensive. It should not be assumed that the property has all necessary planning, building regulation or other consents and Wayne & Silver have not tested any services, equipment or facilities. Purchasers must satisfy themselves by inspection or otherwise.