



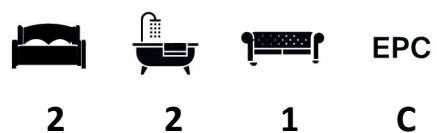
Grove End Road, London NW8 9LN

**WAYNE
& SILVER**

Grove End Road, London NW8 9LN

A modern two bedroom apartment located in the heart of St Johns Wood. The apartment comprises a spacious reception room, open plan kitchen, two double bedrooms and two shower rooms (one en-suite).

Grove End Gardens is well situated for St John's Wood High Street and tube station (Jubilee line) and the property benefits from communal heating and hot water, passenger lift, 24 hour portorage and delightful communal gardens.



Guide price: £690 Per Week

Local Authority: Westminster

Council Tax Band: E

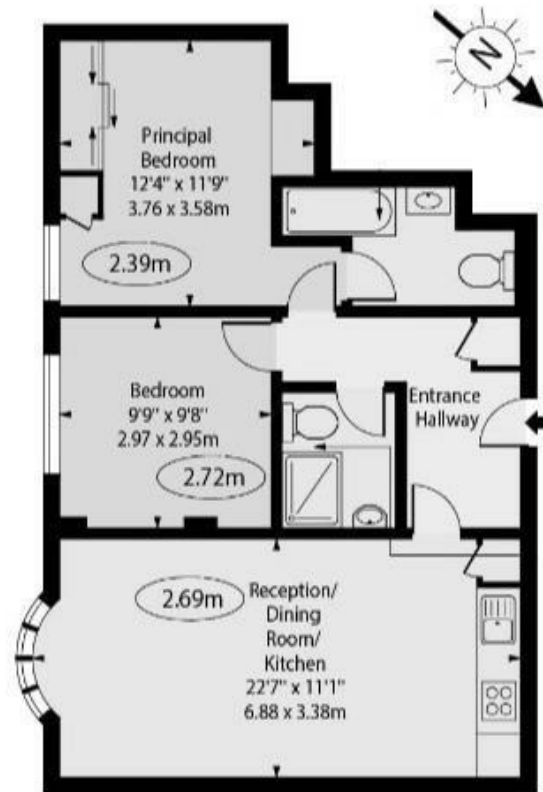








Grove End Gardens,
Grove End Road, NW8



Ground Floor

Approx Gross Internal Area 651 Sq Ft - 60.48 Sq M

41 Heath Street
Hampstead
London
NW3 6UA

We would be delighted to tell you more
020 7431 4488
info@wayne-silver.com

wayne-silver.com

Important Notice: Wayne & Silver, its clients and any joint agents give notice that 1: They are not authorised to make or give any representations or warranties in relation to the property either here or elsewhere, either on their own behalf or on behalf of their client or otherwise. They assume no responsibility for any statement that may be made in these particulars. These particulars do not form part of any offer or contract and must not be relied upon as statements or representations of fact. 2: Any areas, measurements or distances are approximate. The text, photographs and plans are for guidance only and are not necessarily comprehensive. It should not be assumed that the property has all necessary planning, building regulation or other consents and Wayne & Silver have not tested any services, equipment or facilities. Purchasers must satisfy themselves by inspection or otherwise.