



Kidderpore Avenue, Hampstead **NW3 7SJ**

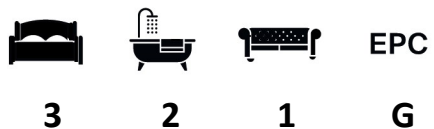
---

**WAYNE  
& SILVER**

## Kidderpore Avenue, Hampstead NW3 7SJ

A modern apartment within an exclusive Hampstead portered development. This home features 3 bedrooms, 2 bathrooms (x1 en-suite), reception room, separate kitchen and private terrace. Further benefits include access to communal gardens and off-street parking

3 Bedrooms : Family Bathroom : En-Suite Bathroom : Reception Room :  
Separate Kitchen : Patio : 24 Hour Concierge : Underground Parking :  
Communal Gardens : Residents Gym : Leisure Facilities



**Guide price:** £800 Per Week

**Tenure:**

**Service Charge:** Add text here

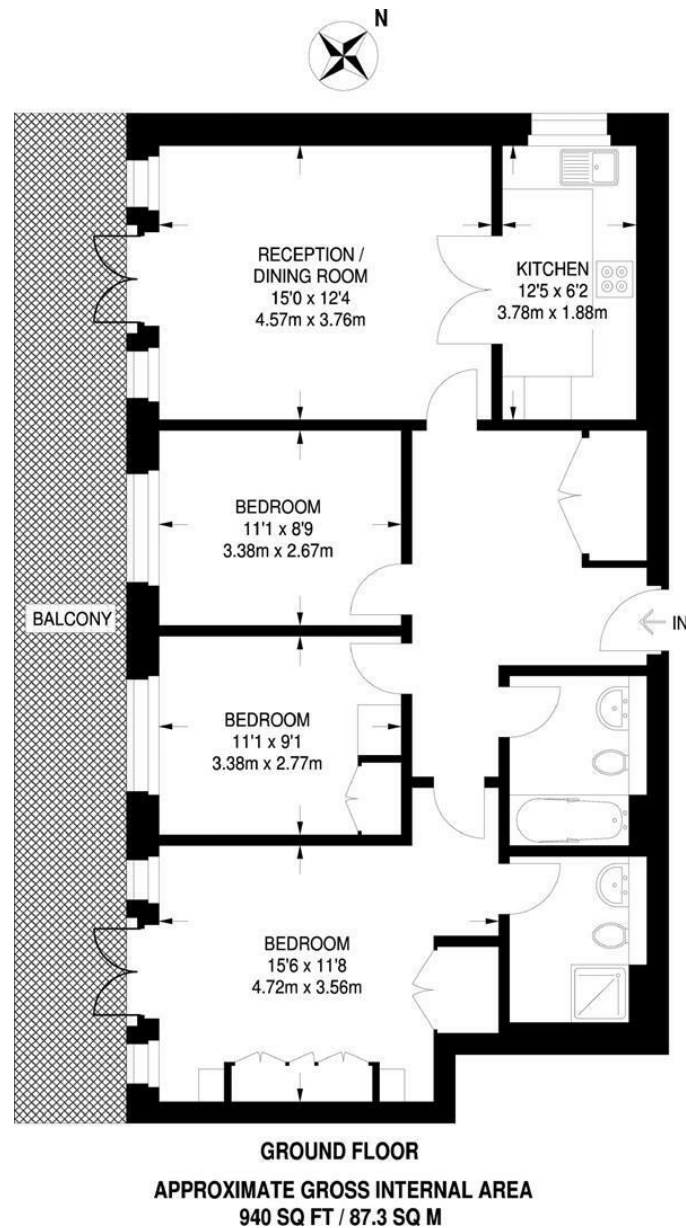
**Local Authority:**

**Council Tax Band:**









GROUND FLOOR  
 APPROXIMATE GROSS INTERNAL AREA  
 940 SQ FT / 87.3 SQ M

41 Heath Street  
 Hampstead  
 London  
 NW3 6UA

We would be delighted to tell you more  
 020 7431 4488  
 info@wayne-silver.com

[wayne-silver.com](http://wayne-silver.com)

**Important Notice:** Wayne & Silver, its clients and any joint agents give notice that 1: They are not authorised to make or give any representations or warranties in relation to the property either here or elsewhere, either on their own behalf or on behalf of their client or otherwise. They assume no responsibility for any statement that may be made in these particulars. These particulars do not form part of any offer or contract and must not be relied upon as statements or representations of fact. 2: Any areas, measurements or distances are approximate. The text, photographs and plans are for guidance only and are not necessarily comprehensive. It should not be assumed that the property has all necessary planning, building regulation or other consents and Wayne & Silver have not tested any services, equipment or facilities. Purchasers must satisfy themselves by inspection or otherwise.