



Church Mount, Hampstead Garden Suburb N2 0RP

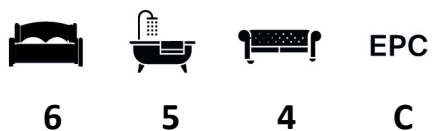
---

**WAYNE  
& SILVER**

## Church Mount, London N2 0RP

This newly constructed house is in wonderful condition, featuring a grand entrance with an impressive feature floating staircase with a large reception area overlooking the garden. The house has fabulous accommodation with 6 bedrooms 4 bathrooms and large open-plan kitchen area, reception room and separate dining room. On the lower ground floor there is gym complex with swimming pool and cinema/play room area and garaging.

Situated in a desirable turning on the south side of Hampstead Garden Suburb located on a quiet residential street within close proximity to both Highgate and Hampstead Golf Courses. The nearby playing fields with tennis courts and the open green spaces of Hampstead Heath.

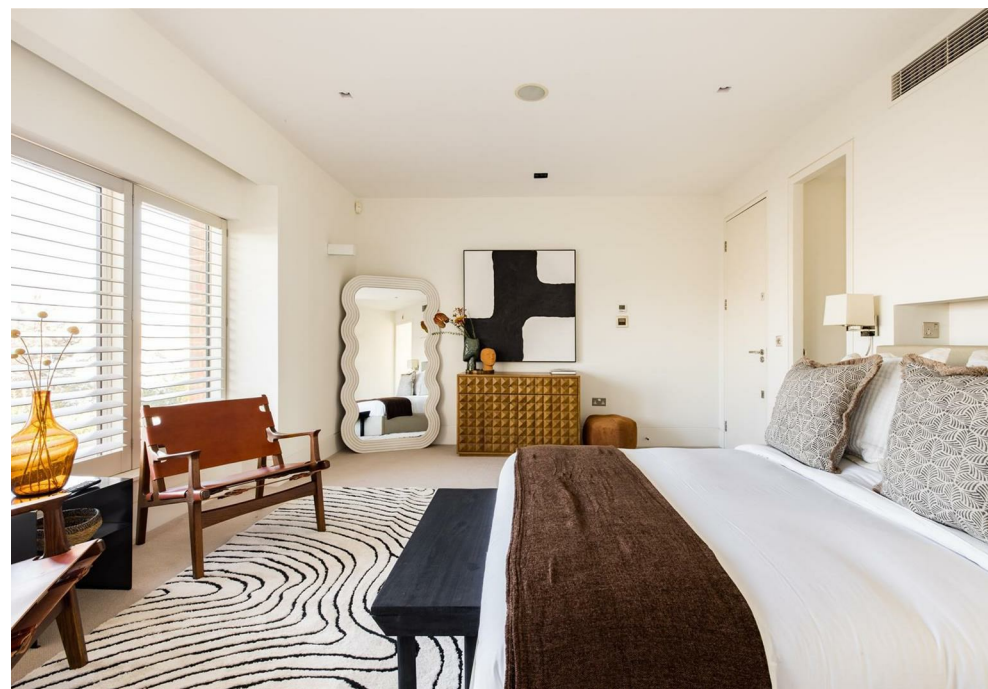


**Guide price:** £5,100,000

**Tenure:** Freehold

**Local Authority:** Barnet

**Council Tax Band:** H

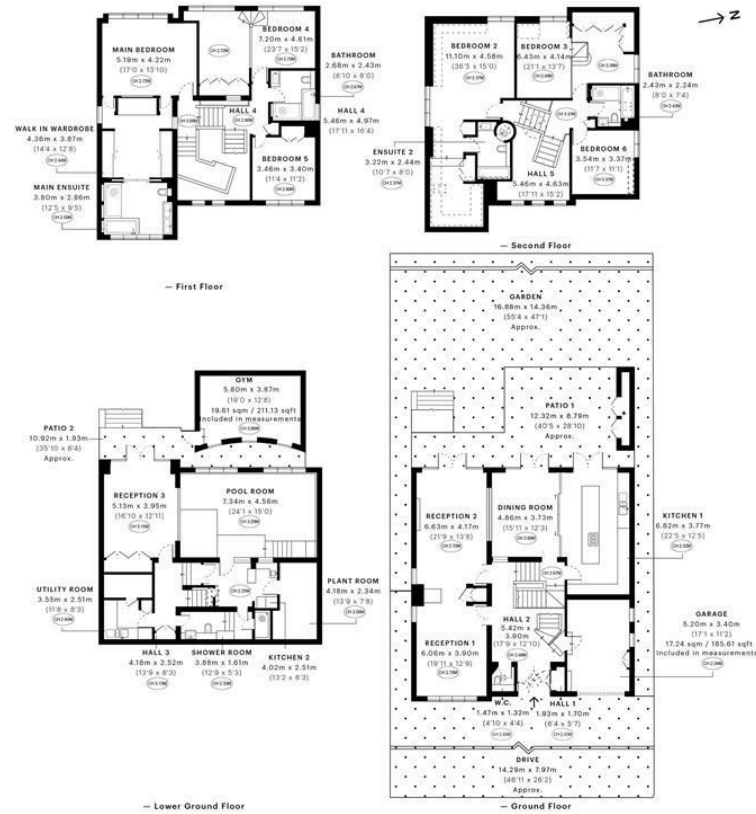




- swimming pool
- architecturally designed
- modern living
- west facing private garden
- internal garage







Spec and RICS floor plans are produced in accordance with Royal Institution of Chartered Surveyors' Property Measurement Standards. Plans and figures are for information only and excluded from all warranties. Due to rounding, numbers may not add up precisely. All measurements shown for the individual rooms are in metres and within the maximum points of measurement captured in the scan.

FILE NO: 5636c3c0de06f8a0cbbd8fa676  
 FILE NO: 5636c3c0de06f8a0cbbd8fa676  
 spec id: 5636c3c0de06f8a0cbbd8fa676

41 Heath Street  
 Hampstead  
 London  
 NW3 6UA

We would be delighted to tell you more  
 020 7431 4488  
 info@wayne-silver.com