



Fitzjohns Avenue, London NW3 6NT

**WAYNE
& SILVER**

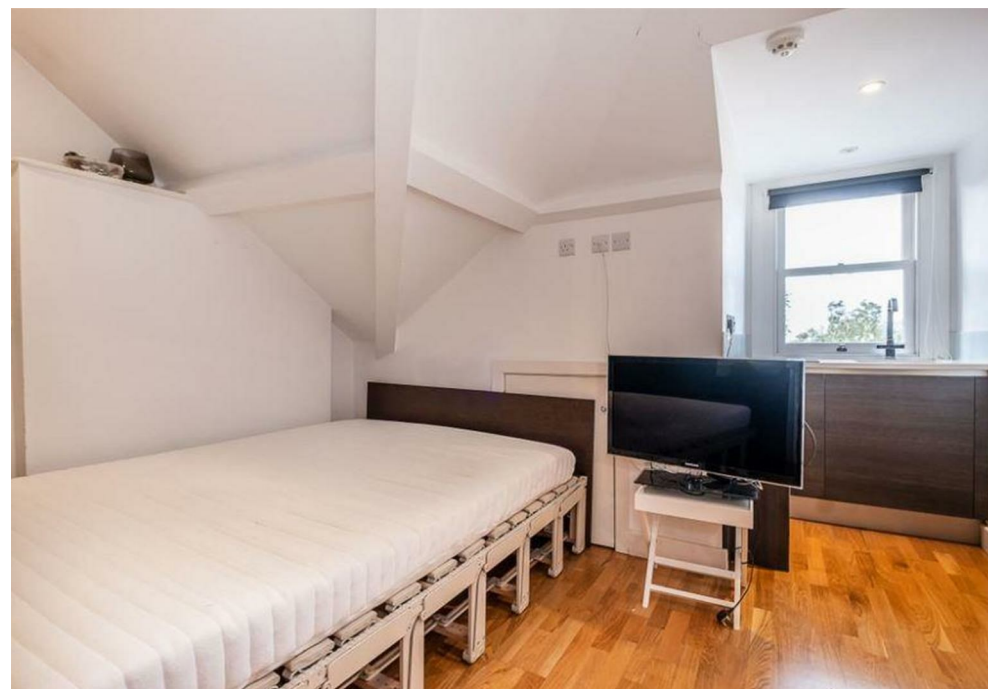
Fitzjohns Avenue, London NW3 6NT




A top-floor (third floor) studio apartment situated within this attractive period conversion. The apartment boasts a contemporary finish, has wooden flooring throughout, a fitted kitchen area, a bathroom with a shower cubicle, large windows and storage.

Transport links include Hampstead (Northern Line) within a few minute's walk as well as the many attractive amenities of Hampstead Village.

Council: Camden

Tax Band: B



   EPC
null null null E

Guide price: £300 Per Week

Tenure:

Service Charge: Add text here

Local Authority: Camden

Council Tax Band: B







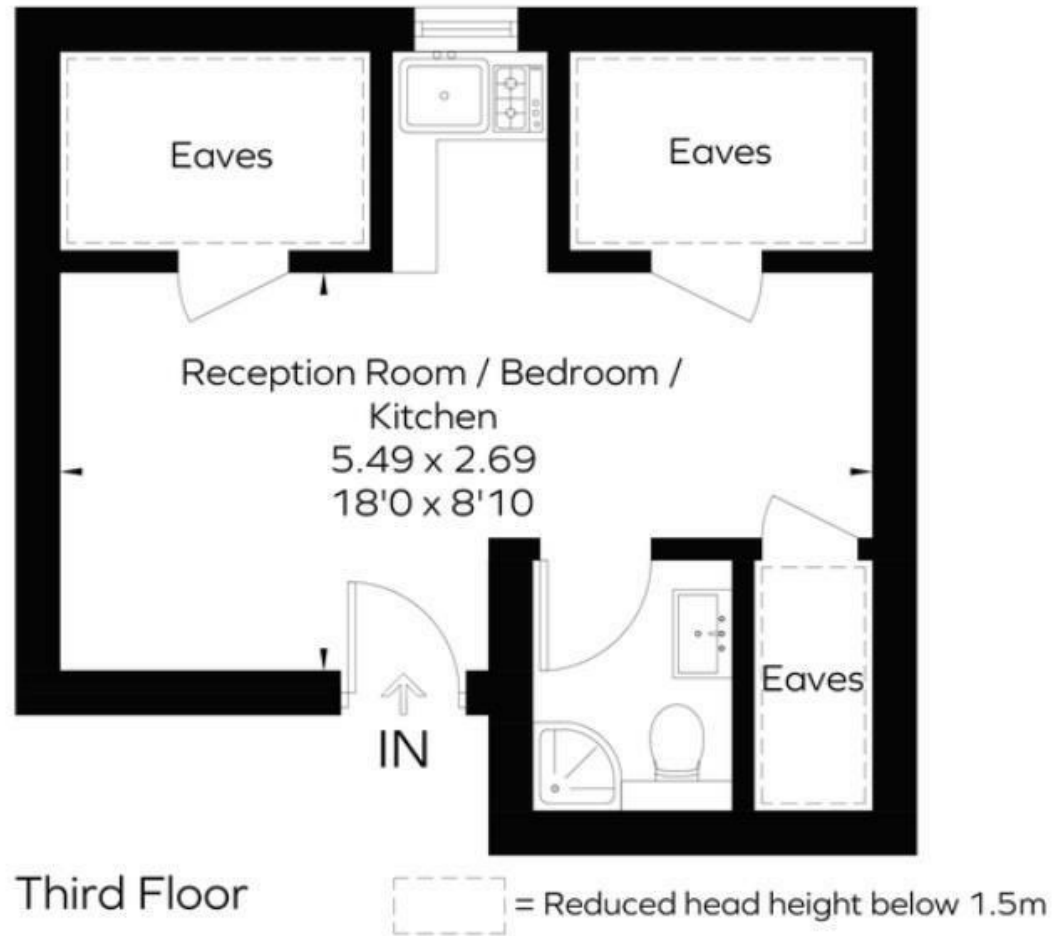
FITZJOHNS AVENUE

Approximate Gross Internal Area (excluding reduced headroom / eaves)

266 sq. ft. (24.7 sq. m.)

Reduced headroom / Eaves = 7 sq. ft. (0.7 sq. m.)

Total = 273 sq. ft. (25.4 sq. m.)



41 Heath Street
Hampstead
London
NW3 6UA

We would be delighted to tell you more
020 7431 4488
info@wayne-silver.com

wayne-silver.com

Important Notice: Wayne & Silver, its clients and any joint agents give notice that 1: They are not authorised to make or give any representations or warranties in relation to the property either here or elsewhere, either on their own behalf or on behalf of their client or otherwise. They assume no responsibility for any statement that may be made in these particulars. These particulars do not form part of any offer or contract and must not be relied upon as statements or representations of fact. 2: Any areas, measurements or distances are approximate. The text, photographs and plans are for guidance only and are not necessarily comprehensive. It should not be assumed that the property has all necessary planning, building regulation or other consents and Wayne & Silver have not tested any services, equipment or facilities. Purchasers must satisfy themselves by inspection or otherwise.