



WAYNE  
& SILVER

Murray Mews, London NW1 9RJ

---

WAYNE  
& SILVER

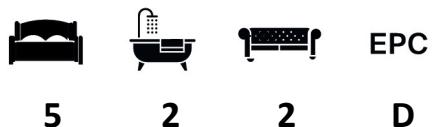
# Murray Mews, London NW1 9RJ

A well planned and designed four/five- bedroom mews house (2,093 sq ft) located in the popular Camden Square conservation area.

The property offers bright and spacious accommodation throughout comprising of four double bedrooms, two bathrooms, a large reception room, a dining area, play room/5th bedroom and a garage/storage room. Further benefits include rear garden and a roof terrace.

Hailed in the architectural press as an early example of the luxury mews house, the property was constructed to a very high standard. It has a number of fine details, including a curved bay window overlooking the garden on the ground floor, a hollowed-out concrete pillar that runs through the core of the interior, and door furniture by Jasper Morrison. There is also a two-storey curved window with acid-etched glass in a chevron pattern, designed by Ray Bradley. The house has been built using recycled London stock bricks, with cubist forms and geometric metalwork.

Murray Mews is a quiet cobbled street just off Camden Square. The house is approximately equal distance between the Underground stations at Camden Town (Northern Line), Kentish Town (Northern Line) and Caledonian Road (Piccadilly Line). Camden Road train station is close at hand, and there are Overground services from Kentish Town and Caledonian Road. The house is also well placed for access to the Eurostar terminal at King's Cross. Murray Mews is within the catchment area of Camden School for Girls as well as numerous other academy's.



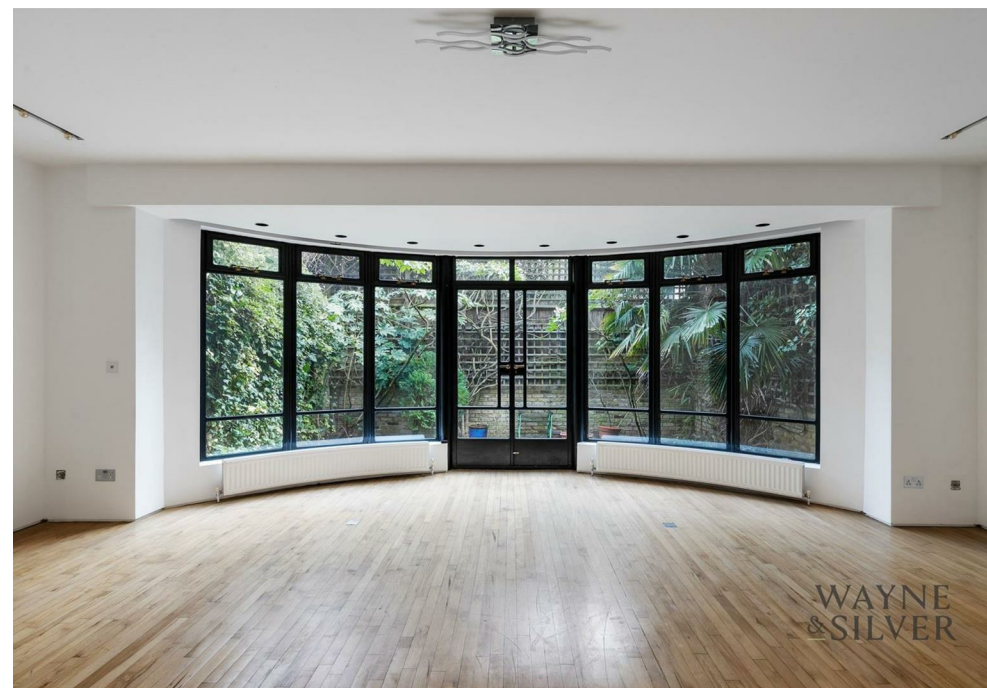
**Guide price:** £1,545 Per Week

**Tenure:**

**Service Charge:** Add text here

**Local Authority:** Camden

**Council Tax Band:** G





WAYNE  
& SILVER

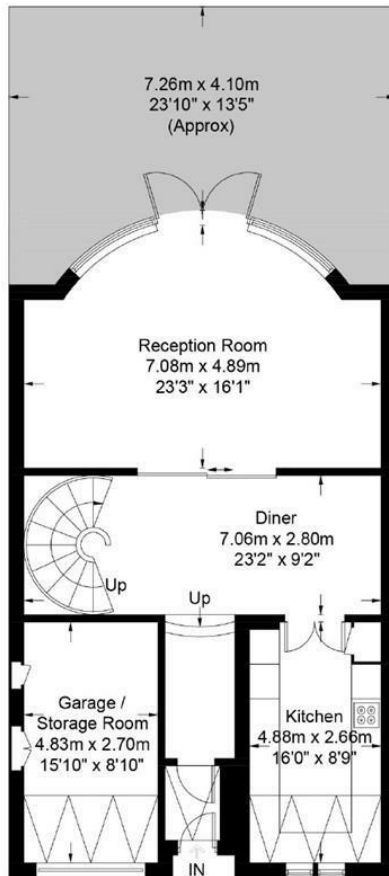




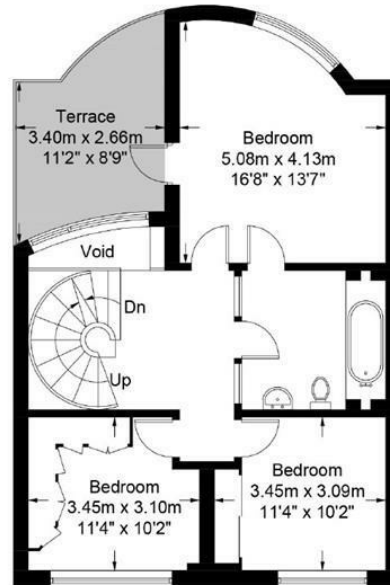


# Murray Mews

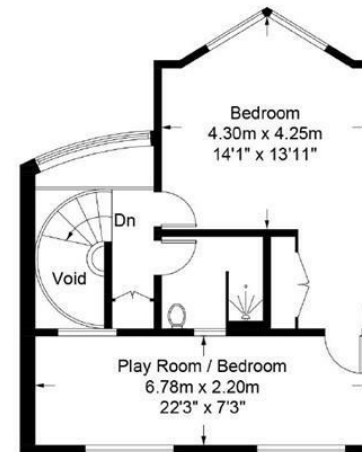
Approximate Gross Internal Area = 2093 sq ft / 194.5 sq m  
(Excluding Void / Including Garage)



Ground Floor



First Floor



Second Floor

This plan is for layout guidance only. Not drawn to scale unless stated. Windows and door openings are approximate. Whilst every care is taken in the preparation of this plan, please check all dimensions, shapes and compass bearings before making any decisions reliant upon them. (ID560827)

41 Heath Street  
Hampstead  
London  
NW3 6UA

We would be delighted to tell you more  
020 7431 4488  
info@wayne-silver.com

[wayne-silver.com](http://wayne-silver.com)

**Important Notice:** Wayne & Silver, its clients and any joint agents give notice that 1: They are not authorised to make or give any representations or warranties in relation to the property either here or elsewhere, either on their own behalf or on behalf of their client or otherwise. They assume no responsibility for any statement that may be made in these particulars. These particulars do not form part of any offer or contract and must not be relied upon as statements or representations of fact. 2: Any areas, measurements or distances are approximate. The text, photographs and plans are for guidance only and are not necessarily comprehensive. It should not be assumed that the property has all necessary planning, building regulation or other consents and Wayne & Silver have not tested any services, equipment or facilities. Purchasers must satisfy themselves by inspection or otherwise.