

**Orchard Crescent, Kirby Cross
CO13 0GF
£375,000 Freehold**





- MODERN DETACHED BUNGALOW
- THREE BEDROOMS
- CONTEMPORARY FITTED KITCHEN
- OPEN PLAN LOUNGE/DINER
- FAMILY BATHROOM
- EN-SUITE SHOWER ROOM
- GARAGE & OFF ROAD PARKING
- PRIVATE CUL-DE-SAC DEVELOPMENT
- CLOSE TO TRAIN STATION & LOCAL AMENITIES
- NO ONWARD CHAIN

**** THREE BEDROOM DETACHED BUNGALOW ****

Located in a small private development in the village of Kirby Cross, this fantastic property is in excellent decorative order and is ready to move straight in to.

Key features include a bright and spacious open plan lounge/dining area with a contemporary kitchen, three double bedrooms, the Principal Bedroom incorporates a modern En-suite shower room, there is a further family bathroom.

The secluded rear garden faces South-East, there is a garage and driveway for parking.

Orchard Crescent is a small development of properties built 2-3 years ago and is located in between Kirby Cross and Frinton-on-Sea. Kirby Cross has its own primary school, local shops and train station with services to London Liverpool Street.

**** NO ONWARD CHAIN ****



The accommodation with approximate room sizes are as follows:

ENTRANCE HALL

Partially glazed uPVC entrance door, laminate flooring, centre light, radiator, storage cupboard.

LOUNGE/DINER/KITCHEN/FAMILY ROOM

21' 7" x 16' 3" (6.57m x 4.95m)

French doors to side, windows to side and rear aspects, laminate flooring, inset spot lights, two radiators. Contemporary high gloss wall and base units, Quartz worktops and upstands, 1½ bowl stainless steel sink/drainers, integrated electric hob with extractor over, oven, microwave, dishwasher, fridge/freezer, water softener, space for washing machine.

PRINCIPAL BEDROOM

13' 6" x 9' 6" (4.11m x 2.89m)

Box bay window to front aspect, carpet flooring, centre light, radiator.

EN-SUITE

8' 7" x 4' 7" (2.61m x 1.40m)

Tiled flooring, inset spot lights. Low level WC, pedestal wash hand basin and large shower enclosure with rainfall shower, fully tiled walls, heated towel rail.

BEDROOM TWO

11' 9" x 9' 7" (3.58m x 2.92m)

Windows to front and side aspects, carpet flooring, centre light, radiator. (currently used as a TV room/snug)

BEDROOM THREE

8' 10" x 8' 9" (2.69m x 2.66m)

Window to side aspect, carpet flooring, centre light, radiator.



FAMILY BATHROOM

8' 6" x 6' 6" (2.59m x 1.98m)

Obscured window to front, tiled flooring, inset spot lights, modern suite comprising panelled bath with shower over and glass screen, low level WC, wall mounted vanity wash hand basin, fully tiled walls, heated towel rail

EXTERIOR

FRONT

Block paved driveway providing off street parking with flowered borders and laid to lawn, garage with remote electric door, access to rear garden.

REAR

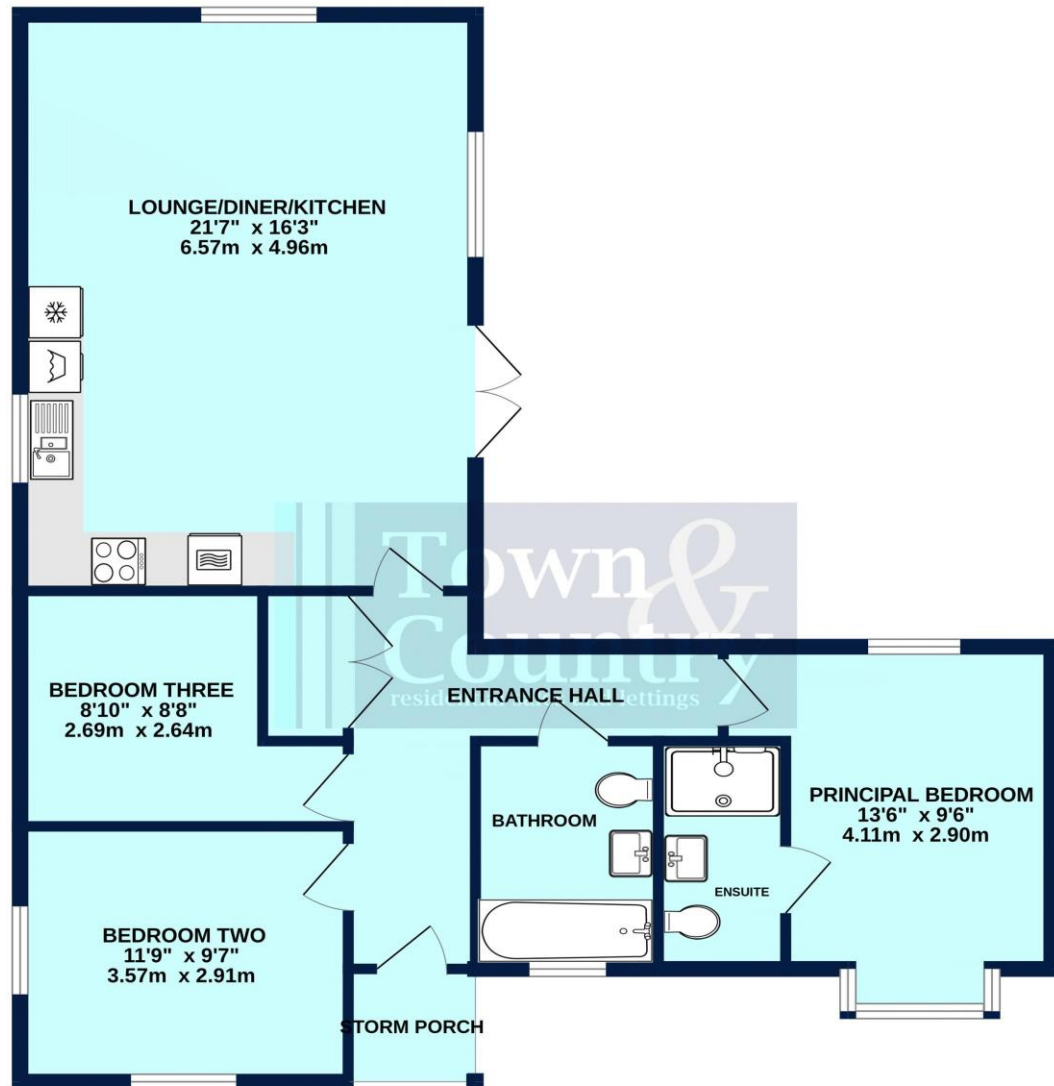
Wrap around south easterly facing garden, laid to lawn, patio, fenced borders.





Score	Energy rating	Current	Potential
92+	A		113 A
81-91	B	82 B	
69-80	C		
55-68	D		
39-54	E		
21-38	F		
1-20	G		

904 sq.ft. (84.0 sq.m.) approx.



ORCHARD CRESCENT

TOTAL FLOOR AREA : 904 sq.ft. (84.0 sq.m.) approx.

Whilst every attempt has been made to ensure the accuracy of the floorplan contained here, measurements of doors, windows, rooms and any other items are approximate and no responsibility is taken for any error, omission or mis-statement. This plan is for illustrative purposes only and should be used as such by any prospective purchaser. The services, systems and appliances shown have not been tested and no guarantee as to their operability or efficiency can be given.
Made with Metropix ©2025

Property Misdescription Act 1991: The Agent has not tested any apparatus, equipment, fixture, fittings or services and does not verify they are in working order, fit for their purpose, or within ownership of the sellers, or within the lessors interest therefore the buyer or ingoing tenant must assume the information given is incorrect. All sizes are approx. and should not be relied on. Buyers/ tenants should satisfy themselves of dimensions when ordering inward fixtures and fittings. Neither has the agent checked the legal documentation to verify legal status of the property, or any neighbourhood planning that is pending, current or proposed for the future. A buyer or ingoing tenant must assume the information is incorrect until it has been verified by their own solicitors. Nothing concerning the type of construction, condition of the structure or its surroundings is to be implied from the photograph, artist's

9 Osbornes Court, Victoria Place, Brightlingsea, Essex CO7 0EB 01206 302288

www.townandcountryresidential.co.uk