

Oaklands Holiday Park
ST OSYTH
CO16 8HW
£24,950

Town & Country
residential sales and lettings





- OPEN PLAN KITCHEN/LOUNGE/DINER
- TWO DOUBLE BEDROOMS
- EN-SUITE TO THE PRINCIPAL BEDROOM
- SHOWER ROOM
- DESIGNATED PARKING SPACE

- OPEN 50 WEEKS OF THE YEAR
- VIEWS OVER THE PARK
- CLOSE TO BEACH AND COUNTRYSIDE WALKS
- VIEWINGS AVAILABLE TODAY
- SOLD WITH NO CHAIN

**** FABULOUS VIEW ****

Oaklands Holiday Park is situated between Colchester and Clacton in an ideal position with countryside walks and the beach close to hand.

The park is open 50 weeks of the year and features a club house/bar which holds regular events as well as a well stocked site shop/convenience store.

This ABI Elegance is a two double bedroom caravan with a spacious and airy kitchen/lounge/diner which has great views of the park.

There is an En-suite to the principal bedroom as well as a separate shower room. Outside there is parking and space for storage should you require it.



The accommodation with approximate room sizes are as follows:

KITCHEN/DINER

18' 3" x 11' 8" (5.56m x 3.55m)

Window to front and side, door to side, laminate flooring, three centre lights, two radiators. Range of wall and base units with stainless steel sink/drainers, cooker, fridge/freezer, dining table with seating.

BEDROOM ONE

11' 9" x 8' 2" (3.58m x 2.49m)

Window to rear, carpet flooring, centre light, radiator, fitted wardrobes.

EN-SUITE

3' 6" x 3' 2" (1.07m x 0.96m)

Obscured window to side, laminate flooring, centre light, radiator. Low level WC and pedestal wash hand basin, boiler cupboard.

BEDROOM TWO

8' 10" x 5' 8" (2.69m x 1.73m)

Window to side, carpet flooring, centre light, radiator, fitted wardrobes.

SHOWER ROOM

6' 3" x 3' 5" (1.90m x 1.04m)

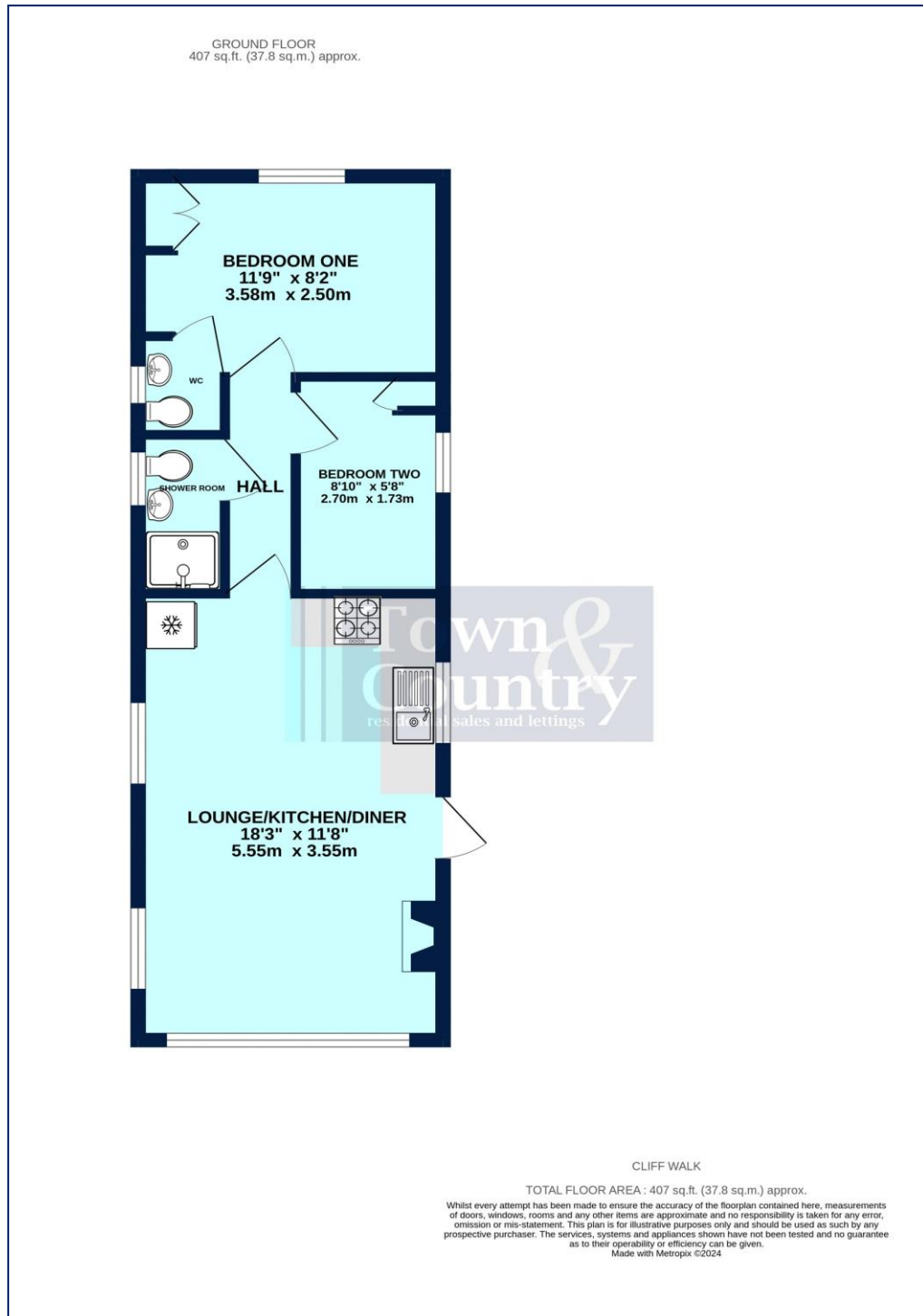
Obscured window to side, laminate flooring, centre light, radiator. Shower enclosure, low level WC and pedestal wash hand basin.

EXTERIOR

Fabulous views of the park, skirting around the base, designated parking space.







Property Misdescription Act 1991: The Agent has not tested any apparatus, equipment, fixture, fittings or services and does not verify they are in working order, fit for their purpose, or within ownership of the sellers, or within the lessors interest therefore the buyer or ingoing tenant must assume the information given is incorrect. All sizes are approx. and should not be relied on. Buyers/ tenants should satisfy themselves of dimensions when ordering inward fixtures and fittings. Neither has the agent checked the legal documentation to verify legal status of the property, or any neighbourhood planning that is pending, current or proposed for the future. A buyer or ingoing tenant must assume the information is incorrect until it has been verified by their own solicitors. Nothing concerning the type of construction, condition of the structure or its surroundings is to be implied