

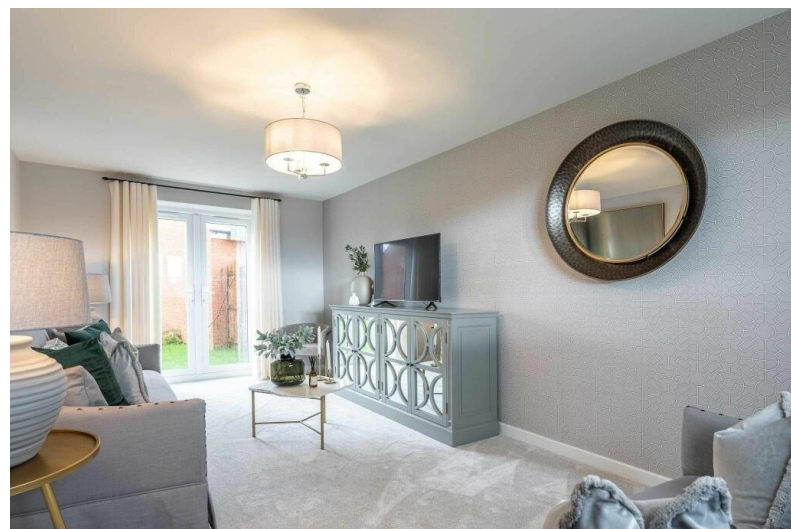


dm^g
DAVID MARTIN
GROUP

Kelvedon Road
Tiptree, CO5 0LX

£375,000
EPC Rating 'TBC'

- Three Bedroom Family Home
- Open Plan Living Space
- Ground Floor Cloakroom
- Part Exchange Available



The Quince, Kelvedon Road, Tiptree, CO5 0LX



Property Description

****Ask Us Today About Part Exchange - Call For Further Information****

David Martin Estate Agents are delighted to offer for sale this **BRAND NEW** family home, **THE QUINCE** situated in the popular village of Tiptree with its excellent range of shops, schools and local amenities and good access to the A12, featuring a stylish open-plan kitchen/dining/living room with French doors leading into the garden, storage cupboards and a ground floor cloakroom. The first floor is home to three bedrooms and a modern family bathroom. Externally the property benefits from a driveway providing off road parking and an enclosed rear garden.

ENTRANCE HALL

KITCHEN/DINING ROOM

17' 0" x 8' 9" (5.19m x 2.68m)

LOUNGE

17' 3" x 9' 6" (5.26m x 2.91m)

CLOAKROOM

BEDROOM ONE

17' 10" x 10' 6" (5.46m x 3.21m)

BEDROOM TWO

12' 11" x 9' 10" (3.94m x 3.02m)

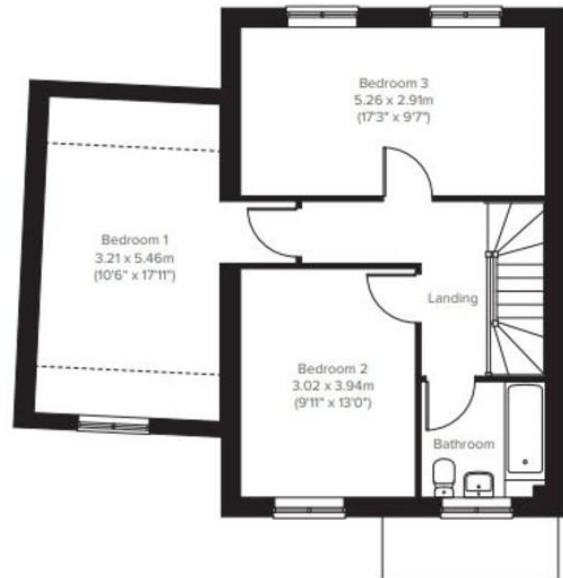
BEDROOM THREE

17' 3" x 9' 6" (5.26m x 2.91m)

FAMILY BATHROOM



Ground Floor



First Floor



Scarlett Mews
Phase 1



Our homes

3 bedroom

- The Cumberland
- The Quince
- The Morello
- The Medler

4 bedroom

- The Damsion
- The Maypole
- The St Clement
- The Mulberry

Affordable Housing



David Martin
35a Church Road
Tiptree
Colchester
Essex

www.dmgtiptree.co.uk
%office_emailAddress%
01621 815815

Agents Note: Whilst every care has been taken to prepare these sales particulars, they are for guidance purposes only. All measurements are approximate are for general guidance purposes only and whilst every care has been taken to ensure their accuracy, they should not be relied upon and potential buyers are advised to recheck the measurements