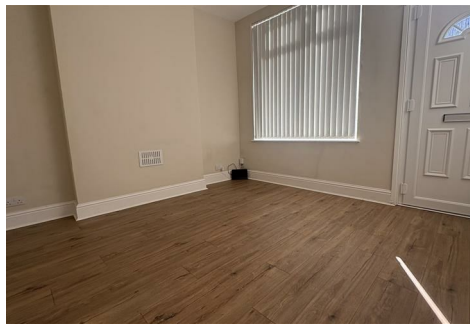




MATTHEW JAMES

Property Services



2 Kirby Road, Coventry, CV5 6HN

£1,200

AVAILABLE NOW.....TWO RECEPTION ROOMS.....FRESHLY PAINTED.....LOW MAINTENANCE GARDEN..... A traditional two bedroom terrace property located in the heart of Earlsdon, Coventry. Comprising of front reception room, middle reception room, MODERN kitchen with cooker, new ground floor bathroom with bath and shower, two double bedrooms with Jack and Jill toilet and low maintenance rear garden. It comes UNFURNISHED. No Smokers.

Front Sitting Room

Middle Room

Fitted Kitchen

Ground Floor Bathroom

Double Bedroom

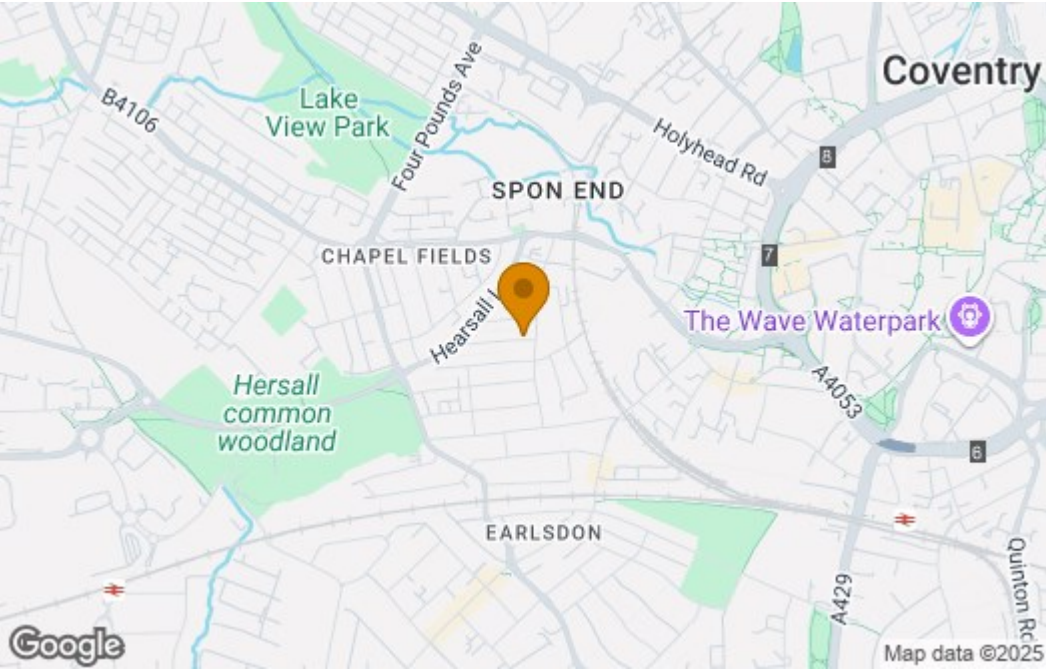
Double Bedroom

Jack and Jill Bathroom

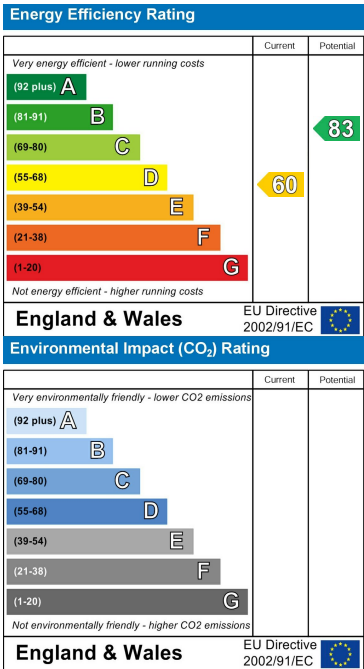
Rear Garden

Floor Plan

Area Map



Energy Efficiency Graph



These particulars, whilst believed to be accurate are set out as a general outline only for guidance and do not constitute any part of an offer or contract. Intending purchasers should not rely on them as statements of representation of fact, but must satisfy themselves by inspection or otherwise as to their accuracy. No person in this firms employment has the authority to make or give any representation or warranty in respect of the property.

CONTACT INFORMATION

24a Warwick Row, Coventry CV1 1EY
02477 170170

info@matthewjames.uk.com
www.matthewjames.uk.com

Facebook
Twitter