



MATTHEW JAMES

Property Services



21 Grindle Road, Coventry, CV6 6BX

Offers Over £155,000

Check out this this charming two-bedroom Victorian terrace home, tucked away on a quiet street in the Longford area. You'll find original features throughout that give it real personality, all while being updated to suit today's lifestyle and create a beautiful home. It's in a great spot too - close to local shops and amenities including The Arena Shopping Park which hosts a range of coffee spots, retails stores and Supermarkets. Step out the door and enjoy scenic walks along the canal... what is there not to love about this property in a super convenient location?

Downstairs accommodation boasts lounge with coal effect fire and wooden surround, a separate dining room for get-togethers, smart galley kitchen with ample storage, rear lobby with large storage cupboard housing the gas boiler and handy ground floor bathroom.

Upstairs, you've got two good-sized double bedrooms with plenty of natural light. Outside, the paved courtyard opens into a lovely, well established peaceful garden—ideal for relaxing or soaking up the sun, storage shed at the rear and gated side access.

This property will not disappoint. Call today to book your viewing appointment!

Lounge

12'0 x 11'10 (3.66m x 3.61m)



Dining Room

15'6 x 11'10 (4.72m x 3.61m)



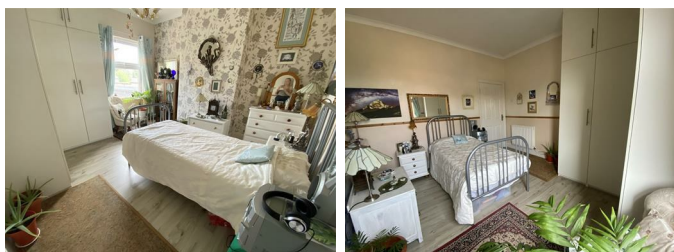
Bathroom

6'1 x 6'1 (1.85m x 1.85m)



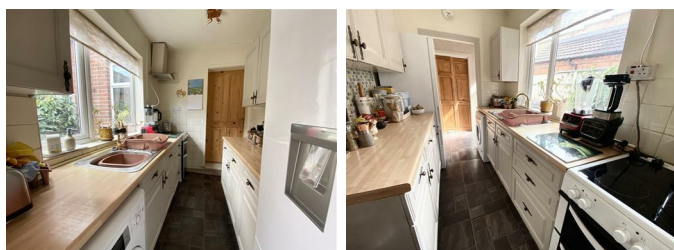
Bedroom One

12'6 x 11'10 (3.81m x 3.61m)



Kitchen

9'3 x 6'1 (2.82m x 1.85m)



Bedroom Two

12'0 x 11'0 (3.66m x 3.35m)

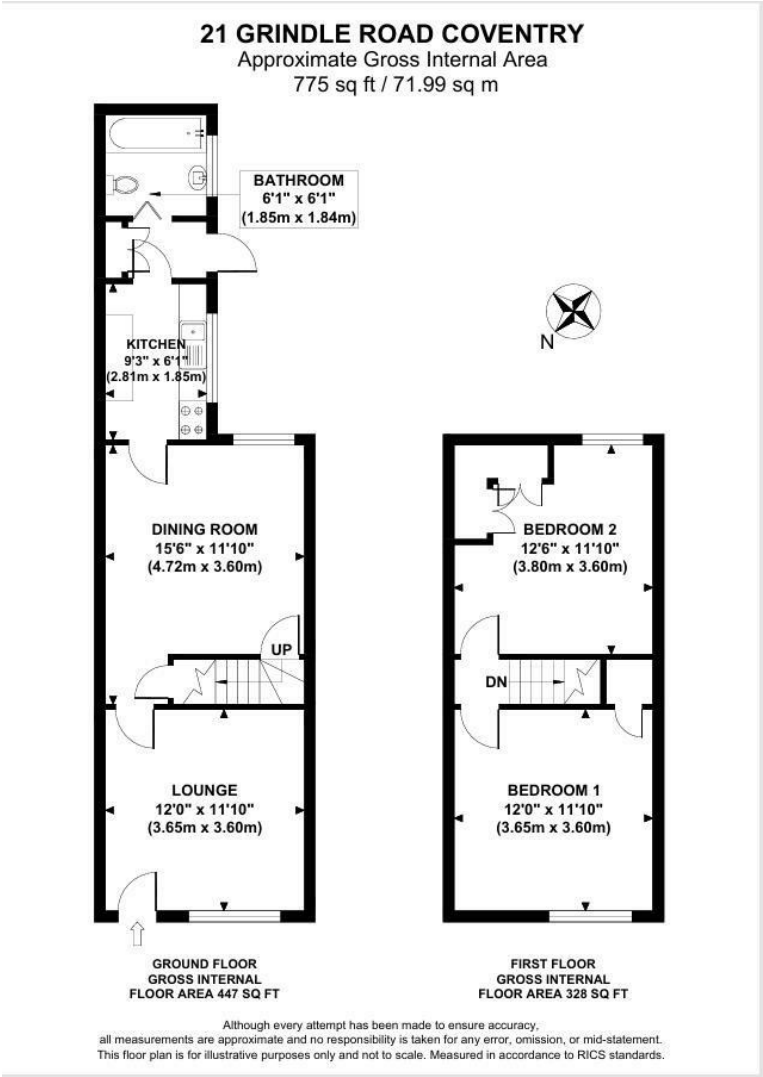


Rear Lobby

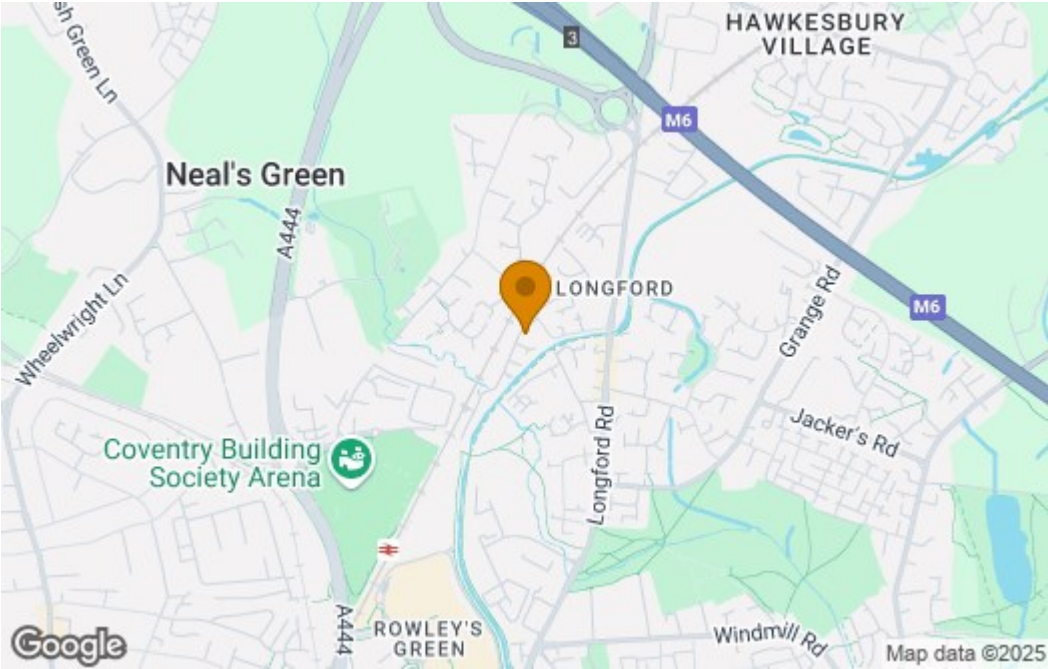
Rear Garden



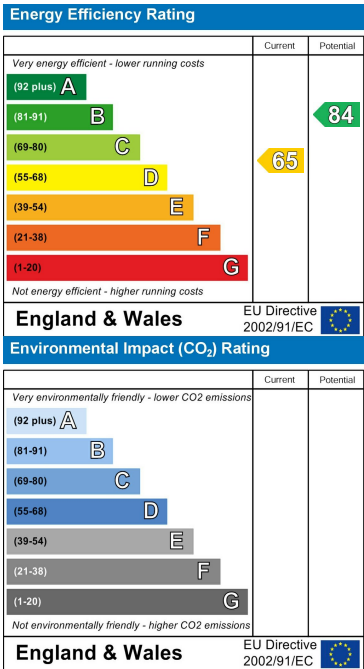
Floor Plan



Area Map



Energy Efficiency Graph



These particulars, whilst believed to be accurate are set out as a general outline only for guidance and do not constitute any part of an offer or contract. Intending purchasers should not rely on them as statements of representation of fact, but must satisfy themselves by inspection or otherwise as to their accuracy. No person in this firm's employment has the authority to make or give any representation or warranty in respect of the property.

CONTACT INFORMATION

24a Warwick Row, Coventry CV1 1EY
02477 170170

info@matthewjames.uk.com
www.matthewjames.uk.com

Facebook
Twitter