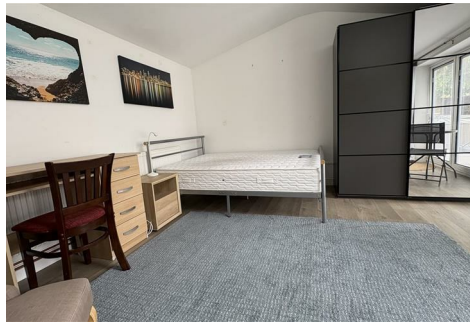




# MATTHEW JAMES

Property Services



## 2 Townsend Road, Coventry, CV3 6HQ

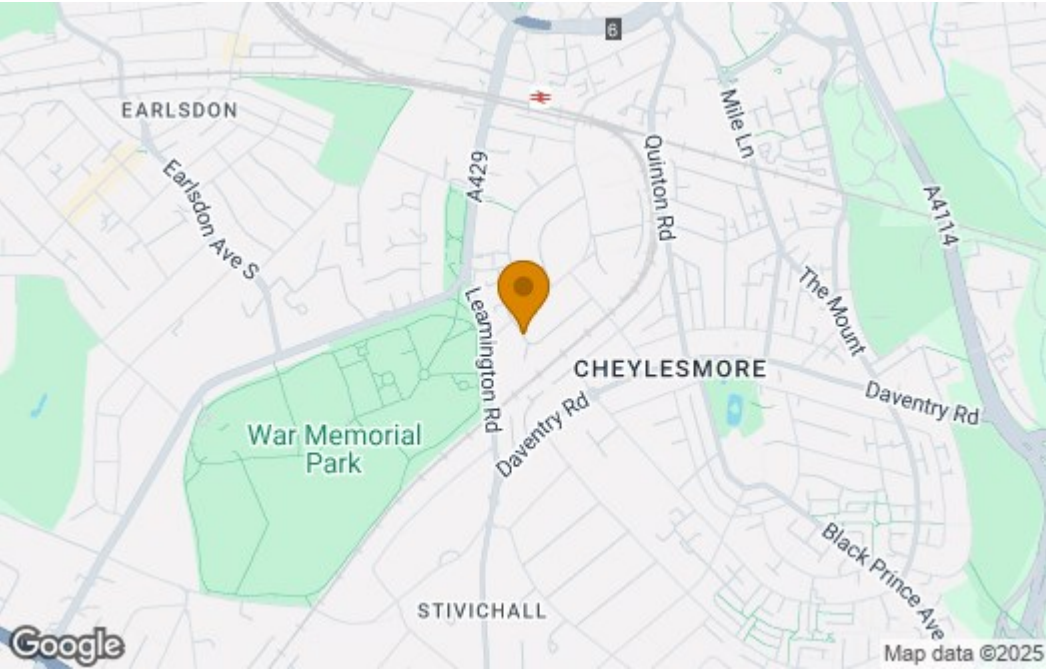
**£795**

AVAILABLE NOW..... STUDIO ANNEX..... FULLY FURNISHED..... BILLS INCLUDED..... Located in Cheylesmore is this studio annex with parking. Comprises of a generous space with double bed, wardrobe and draws. There's a kitchen area with hobs, washing machine and fridge freezer, bathroom with shower cubicle and use of a garden area if required. FULLY FURNISHED. No Smokers.

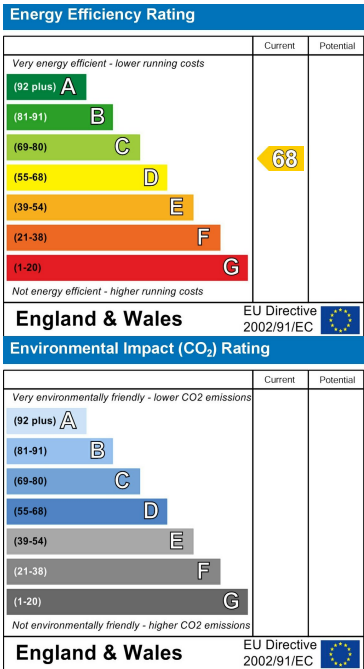


Floor Plan

Area Map



Energy Efficiency Graph



These particulars, whilst believed to be accurate are set out as a general outline only for guidance and do not constitute any part of an offer or contract. Intending purchasers should not rely on them as statements of representation of fact, but must satisfy themselves by inspection or otherwise as to their accuracy. No person in this firms employment has the authority to make or give any representation or warranty in respect of the property.

CONTACT INFORMATION

24a Warwick Row, Coventry CV1 1EY  
02477 170170

info@matthewjames.uk.com  
www.matthewjames.uk.com

Facebook  
Twitter