



MATTHEW JAMES

Property Services



103 Chervil Way, Rugby, CV23 0AX

£300,000

**** COME AND SEE THE PROPERTY FOR YOURSELF - CALL US NOW TO BOOK **** THREE BEDROOMS OVER THREE FLOORS... MID TERRACED... MASTER EN-SUITE... BRAND NEW... OPEN PLAN KITCHEN DINING ROOM... GROUND FLOOR CLOAKROOM... OFF ROAD ALLOCATED PARKING... CUL-DE-SAC LOCATION WITH COUNTRYSIDE VIEWS. **** PART EXCHANGE AND HOME CHANGE AVAILABLE **** **** 5% DEPOSIT PAID **** Located on the sought after Coton Park development, this beautiful 'Windermere' style three bedroom mid terraced property really does need to be viewed. Its located in a quiet cul-de-sac location and private to the front overlooking open countryside. Having allocated parking, its perfect for those that commute as the motorway network is just a short drive away. Is this the perfect next home for you and your family? Briefly comprising off off road parking, entrance porch hallway, living room, open plan kitchen dining room, ground floor cloakroom, three bedrooms, master en-suite, family bathroom with shower over bath and rear garden. Call us now to book for the open house day!

Front Garden Area

Porch Hallway

Lounge Dining Room
14'7 x 11'8 (4.45m x 3.56m)

Ground Floor Cloakroom

Kitchen Dining Room
11'8 x 8'8 (3.56m x 2.64m)

First Floor Landing

Bedroom Two
11'8 x 10'4 (3.56m x 3.15m)

Bedroom Three
11'8 x 8'9 (3.56m x 2.67m)

Family Bathroom

Second Floor Landing

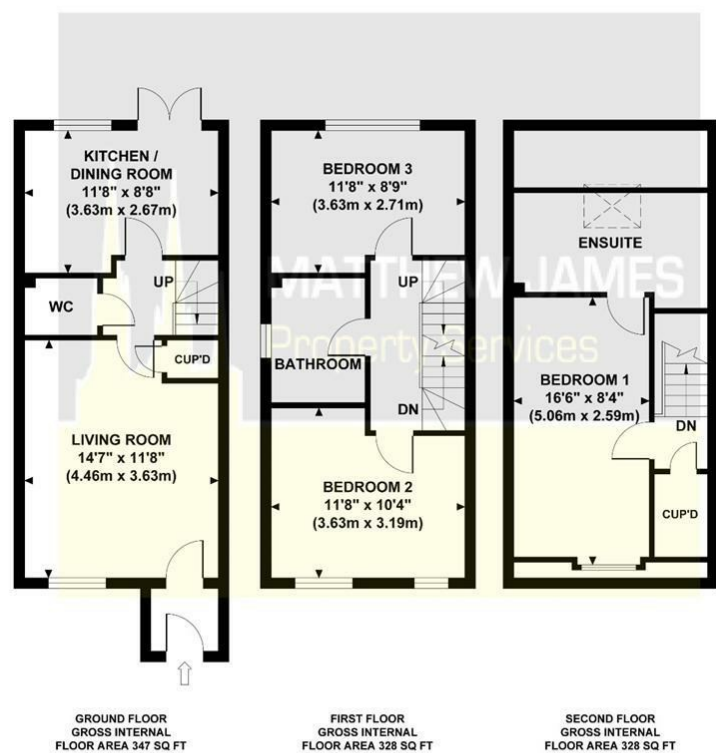
Master Bedroom
16'6 x 8'4 (5.03m x 2.54m)

Master En-Suite

Rear Garden

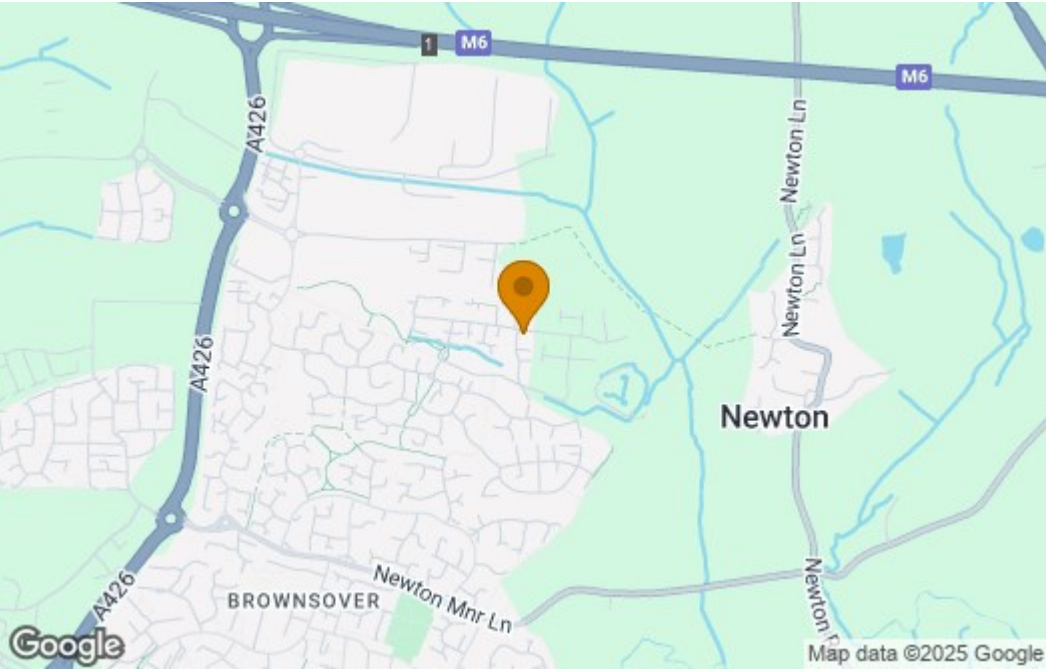
Floor Plan

THE WINDERMERE
Approximate Gross Internal Area
1003 sq ft / 93.20 sq m

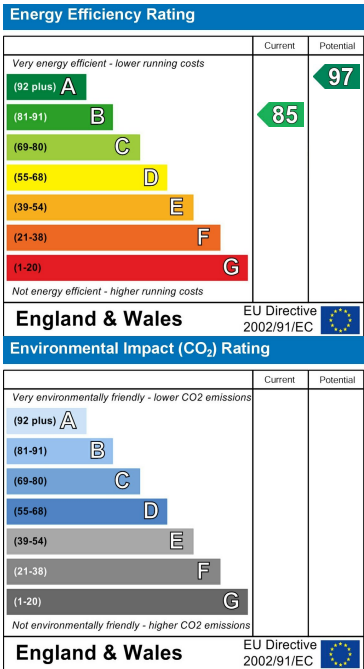


Although every attempt has been made to ensure accuracy,
all measurements are approximate and no responsibility is taken for any error, omission, or mid-statement.
This floor plan is for illustrative purposes only and not to scale. Measured in accordance to RICS standards.

Area Map



Energy Efficiency Graph



These particulars, whilst believed to be accurate are set out as a general outline only for guidance and do not constitute any part of an offer or contract. Intending purchasers should not rely on them as statements of representation of fact, but must satisfy themselves by inspection or otherwise as to their accuracy. No person in this firm's employment has the authority to make or give any representation or warranty in respect of the property.

CONTACT INFORMATION

24a Warwick Row, Coventry CV1 1EY
02477 170170

info@matthewjames.uk.com
www.matthewjames.uk.com

Facebook
Twitter