

Road Map



Hybrid Map



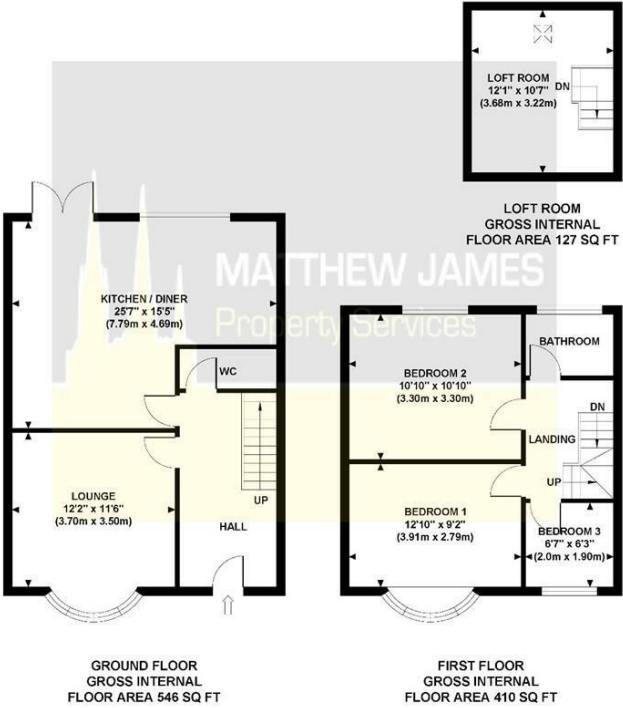
Terrain Map



MATTHEW JAMES
Property Services

Floor Plan

43 ARCH ROAD
Approximate Gross Internal Area 1083 sq ft / 100.60 sq m

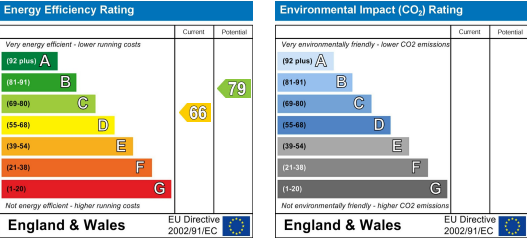


Although every attempt has been made to ensure accuracy, all measurements are approximate and no responsibility is taken for any error, omission, or mid-statement. This floor plan is for illustrative purposes only and not to scale. Measured in accordance to RICS standards.

Viewing

Please contact us on 02477 170170 if you wish to arrange a viewing appointment for this property or require further information.

Energy Efficiency Graph



These particulars, whilst believed to be accurate are set out as a general outline only for guidance and do not constitute any part of an offer or contract. Intending purchasers should not rely on them as statements of representation of fact, but must satisfy themselves by inspection or otherwise as to their accuracy. No person in this firms employment has the authority to make or give any representation or warranty in respect of the property.



43 Arch Road

Wyken, Coventry CV2 5AD

Offers Over £285,000

3 1 1 D



CONTACT INFORMATION

24a Warwick Row, Coventry CV1 1EY

02477 170170

info@matthewjames.uk.com

www.matthewjames.uk.com

Facebook

Twitter

43 Arch Road

Wyken, Coventry CV2 5AD

Offers Over £285,000



Approach

Entrance Hallway

Lounge
12'2 x 11'6

Open Plan Kitchen Dining Room
25'7 x 15'6

Ground Floor W.C

First Floor Landing

Bedroom One
12'10 x 9'2

Bedroom Two
10'10 x 10'10

Bedroom Three
6'7 x 6'3

Bathroom

Loft Room
12'1 x 10'7

Rear Garden

Garage

Park Views

