

Road Map



Hybrid Map

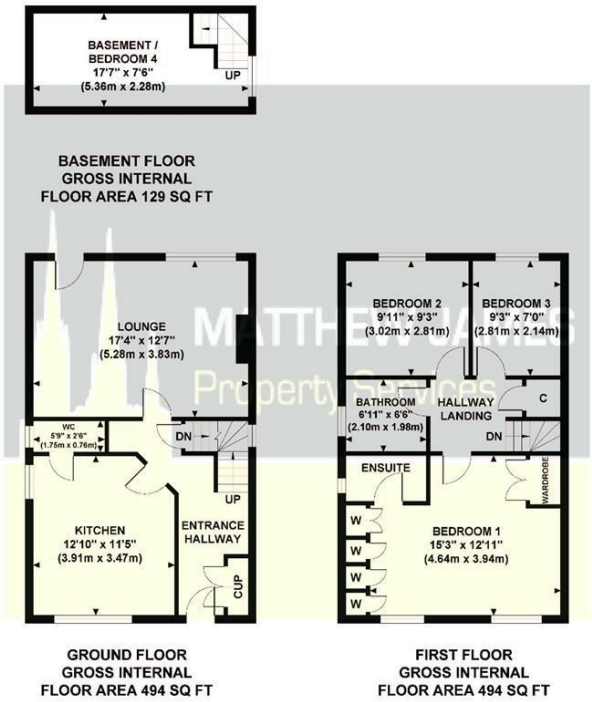


Terrain Map



Floor Plan

DAVID'S HOUSE CHURCH ROAD
Approximate Gross Internal Area
1117 sq ft / 103.77 sq m



Although every attempt has been made to ensure accuracy, all measurements are approximate and no responsibility is taken for any error, omission, or mid-statement. This floor plan is for illustrative purposes only and not to scale. Measured in accordance to RICS standards.

Viewing

Please contact us on 02477 170170 if you wish to arrange a viewing appointment for this property or require further information.

These particulars, whilst believed to be accurate are set out as a general outline only for guidance and do not constitute any part of an offer or contract. Intending purchasers should not rely on them as statements of representation of fact, but must satisfy themselves by inspection or otherwise as to their accuracy. No person in this firms employment has the authority to make or give any representation or warranty in respect of the property.

CONTACT INFORMATION

24a Warwick Row, Coventry CV1 1EY

02477 170170

info@matthewjames.uk.com

www.matthewjames.uk.com

Facebook

Twitter

MATTHEW JAMES
Property Services



Davids House Church Road

Baginton, Coventry CV8 3AR

£495,000



Dauids House Church Road

Baginton, Coventry CV8 3AR

£495,000



Driveway & Approach

Entrance Hallway

Fitted Kitchen

12'10 x 11'5

W.C

5'9 x 2'6

Lounge

17'4 x 12'7

Basement / Bedroom Four

17'7 x 7'6

First Floor Landing

Master Bedroom

15'3 x 12'11

En Suite

Bedroom Two

9'11 x 9'3

Bedroom Three

9'3 x 7'0

Family Bathroom

6'11 x 6'6

Rear Garden

Surrounding Area

Virtual Images

