

Road Map



Hybrid Map



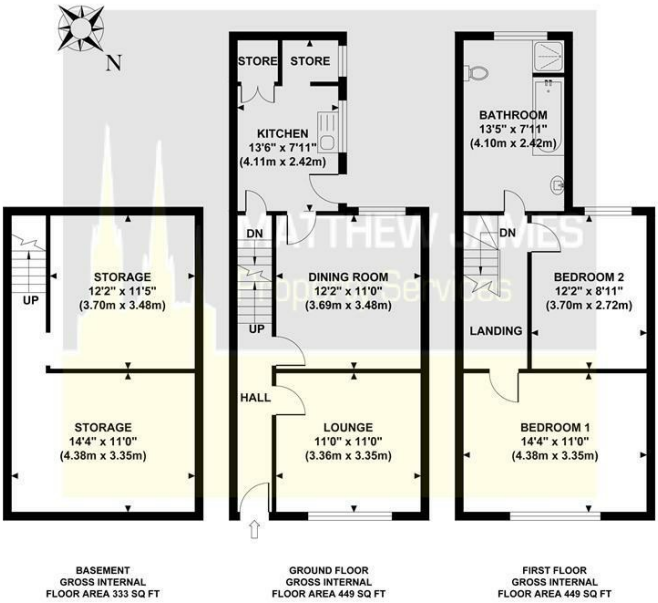
Terrain Map



MATTHEW JAMES
Property Services

Floor Plan

25 LOWER FORD STREET
Approximate Gross Internal Area 1231 sq ft / 114.40 sq m



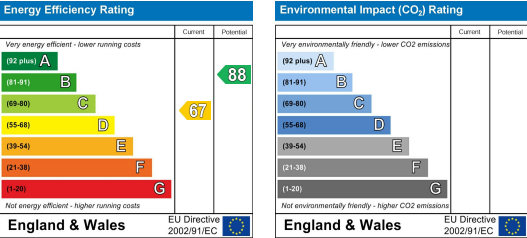
Although every attempt has been made to ensure accuracy, all measurements are approximate and no responsibility is taken for any error, omission, or mid-statement. This floor plan is for illustrative purposes only and not to scale. Measured in accordance to RICS standards.

Viewing

Please contact us on 02477 170170 if you wish to arrange a viewing appointment for this property or require further information.

These particulars, whilst believed to be accurate are set out as a general outline only for guidance and do not constitute any part of an offer or contract. Intending purchasers should not rely on them as statements of representation of fact, but must satisfy themselves by inspection or otherwise as to their accuracy. No person in this firms employment has the authority to make or give any representation or warranty in respect of the property.

Energy Efficiency Graph



25 Lower Ford Street
Hillfields, Coventry CV1 5PS

Offers Over £230,000



CONTACT INFORMATION

📍 24a Warwick Row, Coventry CV1 1EY

☎ 02477 170170

✉ info@matthewjames.uk.com

🌐 www.matthewjames.uk.com

📘 Facebook

🐦 Twitter

25 Lower Ford Street

Hillfields, Coventry CV1 5PS

Offers Over £230,000



Approach

Entrance Hall

Lounge

12'1 x 11'

Dining Room

12'1 x 11'5

Kitchen

9'11 x 8'

Basement Area

Upstairs Landing

Bedroom One

14'6 x 10'11

Bedroom Two

12'12 x 9'

Bathroom

13'3 x 7'11

Rear Garden

