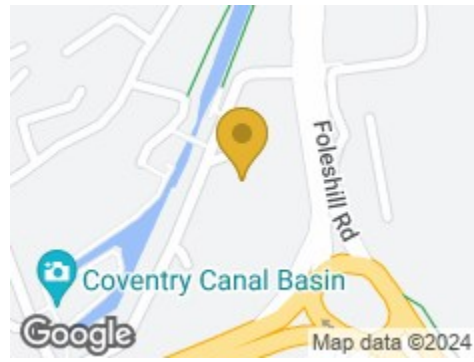


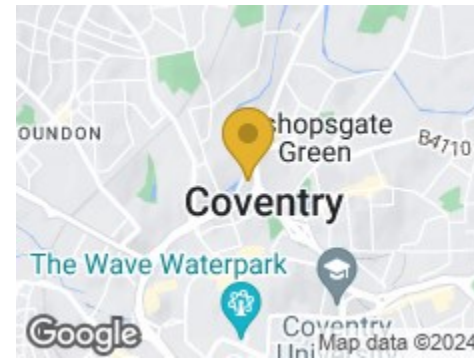
Road Map



Hybrid Map



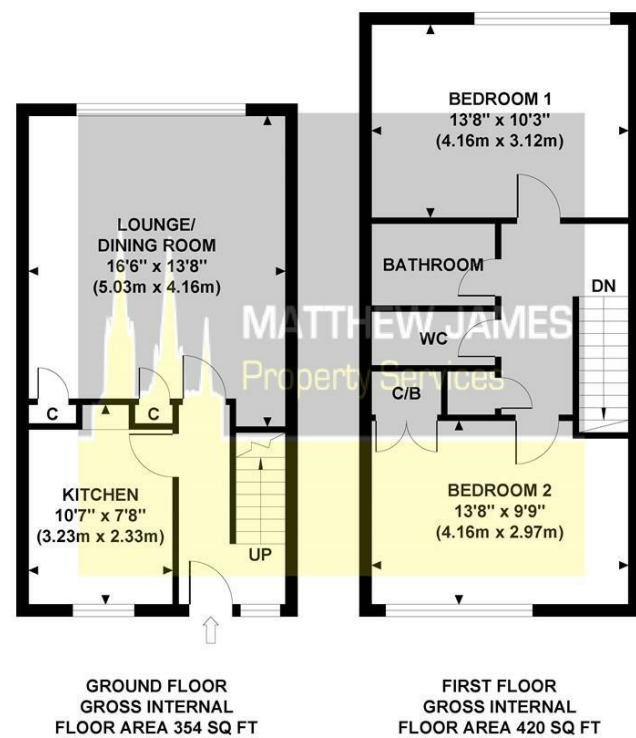
Terrain Map



MATTHEW JAMES
Property Services

Floor Plan

33 JOHN TOFTS HOUSE
Approximate Gross Internal Area
774 sq ft / 71.90 sq m



GROUND FLOOR
GROSS INTERNAL
FLOOR AREA 354 SQ FT

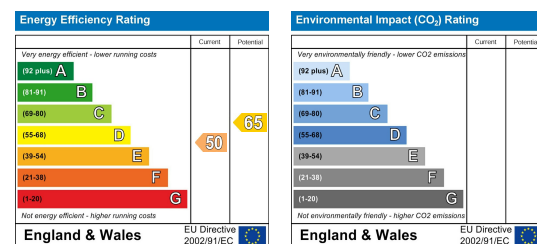
FIRST FLOOR
GROSS INTERNAL
FLOOR AREA 420 SQ FT

Although every attempt has been made to ensure accuracy, all measurements are approximate and no responsibility is taken for any error, omission, or mis-statement. This floor plan is for illustrative purposes only and not to scale. Measured in accordance to RICS standards.

Viewing

Please contact us on 02477 170170 if you wish to arrange a viewing appointment for this property or require further information.

Energy Efficiency Graph



These particulars, whilst believed to be accurate are set out as a general outline only for guidance and do not constitute any part of an offer or contract. Intending purchasers should not rely on them as statements of representation of fact, but must satisfy themselves by inspection or otherwise as to their accuracy. No person in this firm's employment has the authority to make or give any representation or warranty in respect of the property.



33 Leicester Row
, Coventry CV1 4AL

Offers Over £115,000



CONTACT INFORMATION

24a Warwick Row, Coventry CV1 1EY
02477 170170

info@matthewjames.uk.com
www.matthewjames.uk.com

Facebook
Twitter

33 Leicester Row

, Coventry CV1 4AL

Offers Over £115,000



Car Park

Locked Access Door

Entrance Hallway

Kitchen

10'7 x 7'8

Lounge/Dining Room

16'6 x 13'8

Hallway Landing

Bedroom One

13'8 x 10'3

Bedroom Two

13'8 x 10'3

Bathroom

WC

Courtyard With Storage Shed

