



167 Bermondsey Street, SE1 3UF

independent
london. 
Right place. Right people.

167 Bermondsey St SE1 3UF

A smart, modern two-bedroom apartment in a fashionable street near to the South Bank

A very smart and modern furnished apartment with a mid-century modern feel located in SE1 on Bermondsey Street.

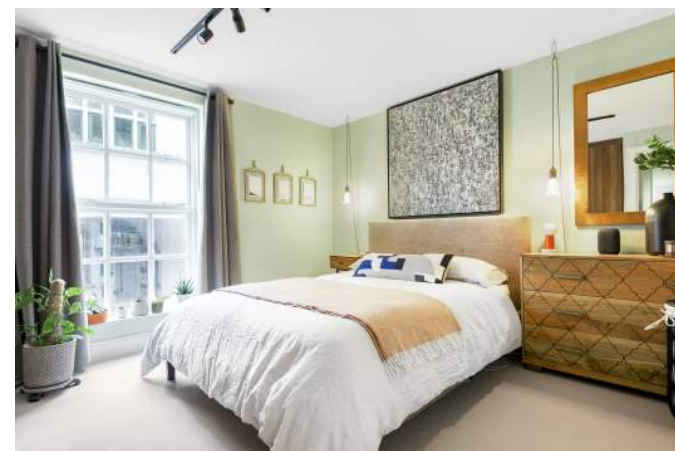
The apartment has been thoughtfully furnished by the owners and presents very well.

Ready to go, it is currently set up as a one bedroom with office/study/guest room but can easily be adapted for sharers.

The location is immense, right on Bermondsey Street with an easy walk to London Bridge Station for commuters and within easy walking distance of any number of local attractions, including Borough Market, The South Bank, Shad Thames and More London.

Perfect for a professional couple or sharers.

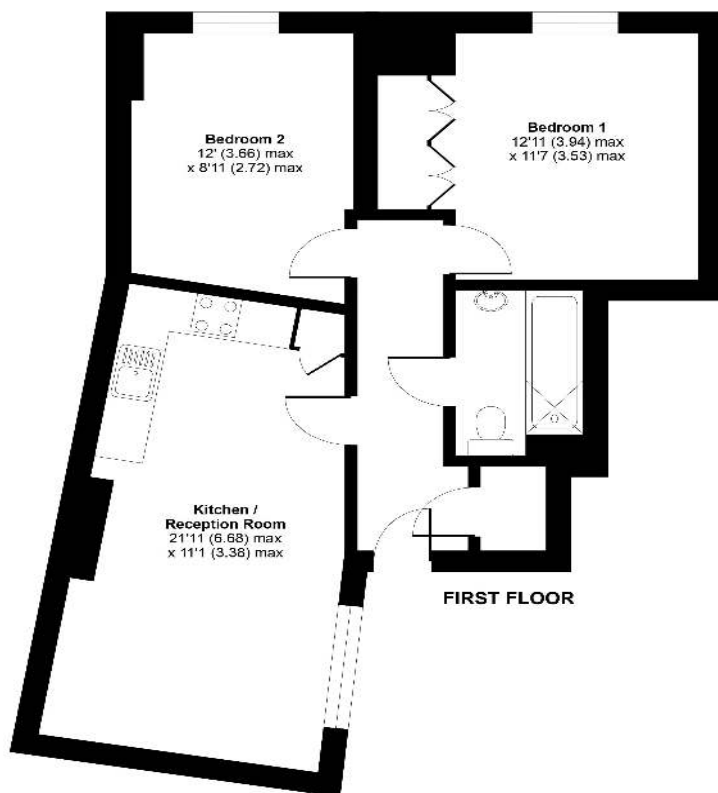
Viewing is strictly by appointment only and an email is the essential first step in booking your visit





Bermondsey Street, London, SE1

Approximate Area = 620 sq ft / 57.6 sq m
For identification only - Not to scale



Floor plan produced in accordance with RICS Property Measurement Standards incorporating International Property Measurement Standards (IPMS Residential), 4th edition 2022. Produced for Independent London Ltd. REF: 266281

All rooms have been measured with electronic laser and are approximate measurements only. None of the services to the above property have been tested by ourselves, and we cannot guarantee that the installations described in the details are in perfect working order. Independent London Lettings for themselves, and for the vendors or lessors, produce these brochures in good faith, and are a guideline only. They do not constitute any part of a contract and are correct to the best of our knowledge at the time of going to press.

| | |
|--------------------|--|
| Deposit: | 5 Weeks |
| Bedrooms: | 2 |
| Bathrooms: | 1 |
| Furnished: | Yes |
| Property Style: | Modern |
| Location: | Bermondsey |
| Council Tax Band: | D |
| EPC Rating: | C |
| Parking: | No |
| Nearest Transport: | London Bridge tube or overground for Jubilee Line, Northern Line or Trains |

Independent London
6-8 Cole Street, Trinity Village,
London SE1 4YH
t: 020 7099 6373
e: hello@independentlondon.net

independentlondon.co.uk
Landlords ask for The 5% Let Only
Service from Independent London

**independent
london.**
Right place. Right people.

