



OUR  
ESG

BOTANICA

DITTON PARK





# OUR ENVIRONMENTAL SOCIAL GOVERNANCE

BOTANICA

DITTON PARK







OUR

LESS

AT

BOTANICA

DITTON PARK



AWARDS & ACREDITATIONS

# WE ARE PROUD



National  
Landscape  
Awards  
2021



NODE  
ENABLED



2 STARS

\*CERTIFICATE  
TO BE ISSUED  
SHORTLY



SUSTAINABLE MANAGEMENT

# WE ARE RESPONSIBLE



**100% RENEWABLE  
ELECTRICITY**



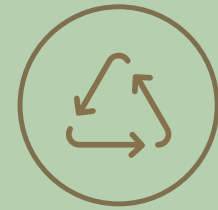
**FOOD WASTE BINS  
THROUGHOUT &  
ONSITE COMPOSTING**



**BATTERY  
RECYCLING**



**ONSITE WASTE  
MANAGEMENT  
TEAM**



**RECYCLING BINS  
THROUGHOUT**



SUSTAINABLE BUILDING

# WE ARE SMART



## REFURBISHED EXISTING BUILDING



**22°C ± 2°C AND 12L/S PER PERSON** which meets BCO and an assumed BREEAM set parameters for refurbishment

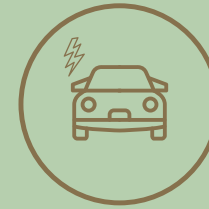


## NEW LED LIGHTING THROUGHOUT

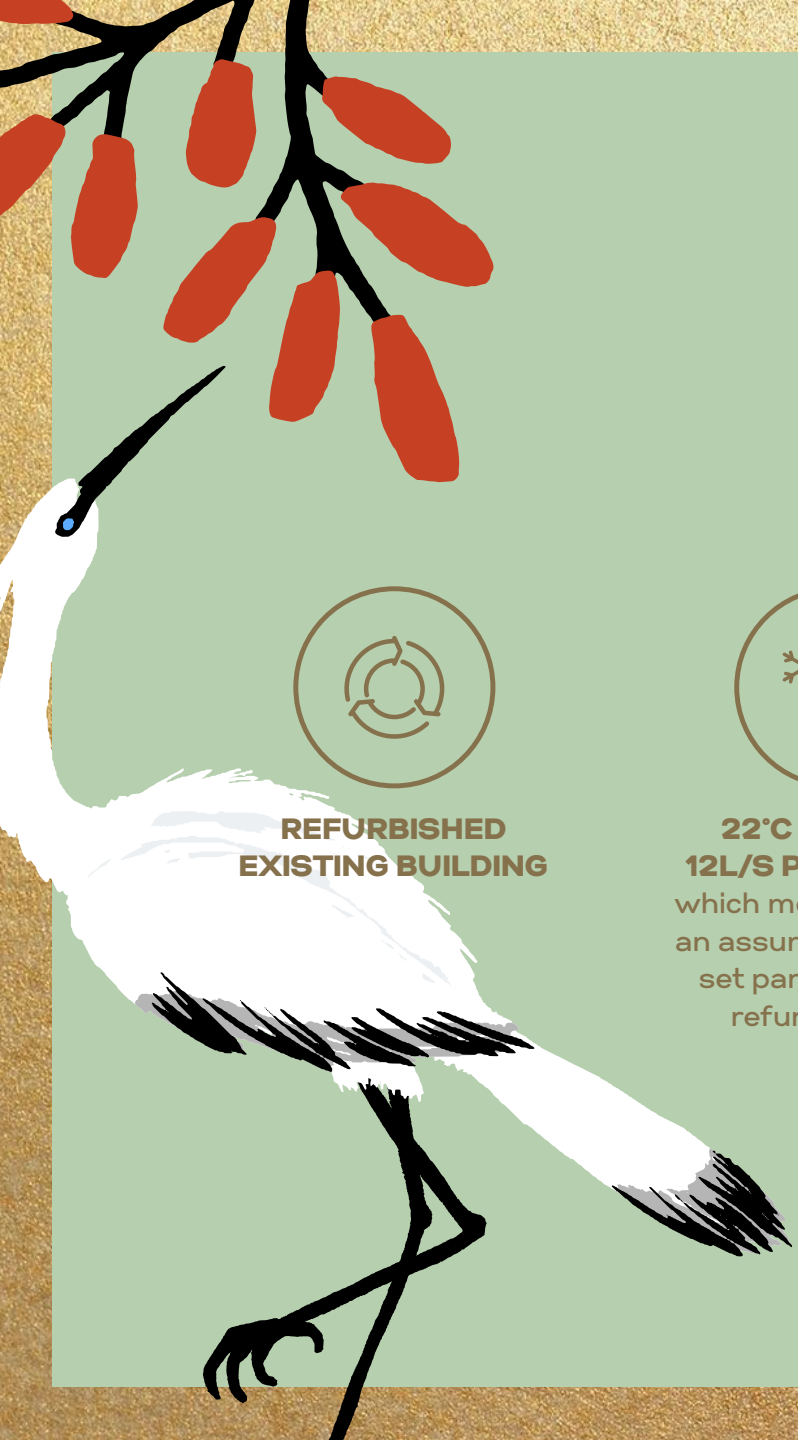
with automatic lighting controls to offices via daylight sensing and presence detectors which meets BCO and an assumed BREEAM set parameters for refurbishment.



## EXISTING MATERIALS RETAINED



**EV CHARGING POINTS** with scope to accommodate to tenant demand.





SUSTAINABLE LIFESTYLE

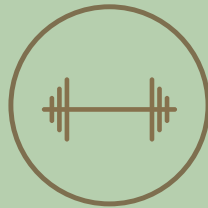
# WE ARE ACTIVE



LOCATED IN  
200 ACRES OF OPEN  
LANDSCAPE



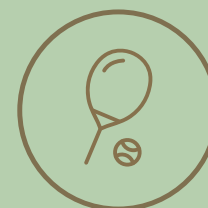
ONSITE RUNNING/  
WALKING ROUTE



NUTFIELD  
HEALTH GYM WITH  
CLASSES & PT



OUTDOOR GYM



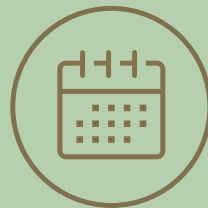
OUTDOOR  
MULTI-SPORTS  
FACILITY



SHOWERS



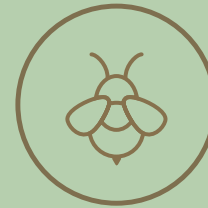
LOCKERS



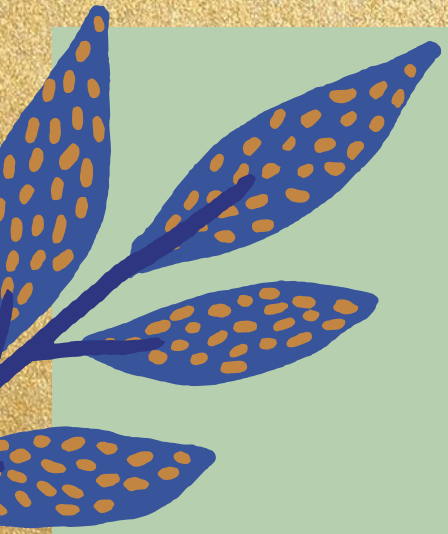
WELLNESS  
EVENTS ONSITE



SECURE CYCLE  
STORAGE



BEE KEEPING





SUSTAINABLE FUTURE

# WE ARE AMBITIOUS

CURRENT PLANS

INSTALLING PHOTOVOLTAIC CELLS

UNDERTAKING BREEM IN USE  
(SUBJECT TO BUILDING BEING OCCUPIED)

WHOLE LIFE CARBON ASSESSMENT

KENNEDY WILSON HAVE THEIR OWN  
SUSTAINABILITY REQUIREMENTS AND  
RESPONSIBILITY AS A LANDLORD





## CONTACT

# WE ARE A PHONE CALL AWAY



**RODDY ABRAM**

T: +44 (0) 20 7861 1166

[RoddyAbram@knightfrank.com](mailto:RoddyAbram@knightfrank.com)

**ANDY NIXON**

T: +44 (0) 20 3909 6830

[AndyNixon@knightfrank.com](mailto:AndyNixon@knightfrank.com)

**JACK VESTEY**

T: +44 (0) 20 8176 9791

[Jack.Vestey@knightfrank.com](mailto:Jack.Vestey@knightfrank.com)



**TOM FLETCHER**

T: +44 (0) 7752 127 413

[Tom@hatch-re.com](mailto:Tom@hatch-re.com)

**CHARLIE BENN**

T: +44 (0) 7563 383 443

[Charlie@hatch-re.com](mailto:Charlie@hatch-re.com)



**TOBY LUMSDEN**

T: +44 (0) 7796 444 379

[Tobylumsden@brayfoxsmith.com](mailto:Tobylumsden@brayfoxsmith.com)

**JAMES SHILLABEER**

T: +44 (0) 7824 663 594

[Jameshillabeer@brayfoxsmith.com](mailto:Jameshillabeer@brayfoxsmith.com)



**BOTANICA-DITTONPARK.COM**