

# • METRO •

HAMMERSMITH W6

[metro-hammersmith.com](http://metro-hammersmith.com)

•METRO•

1 BUTTERWICK, HAMMERSMITH  
LONDON W6 8DL

“PROGRESS  
IS IMPOSSIBLE  
WITHOUT  
CHANGE

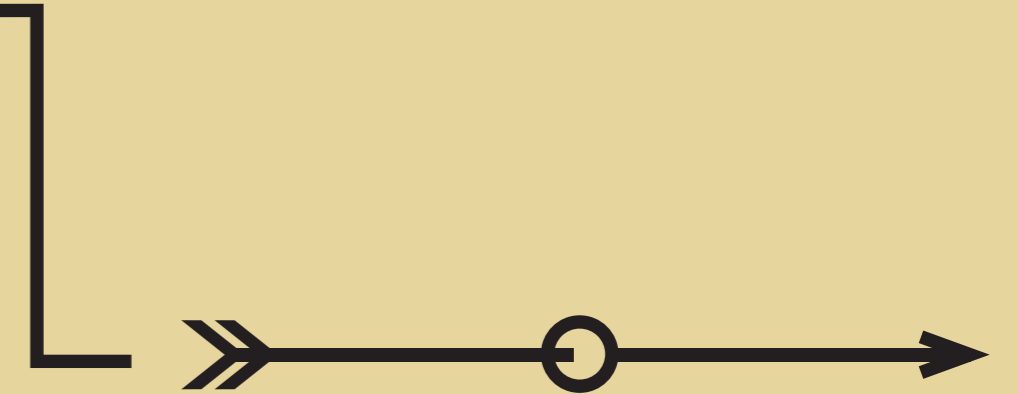
FROM THAT LIGHTBULB MOMENT TO THE  
LIGHTBULBS, SOME OF THE BEST IDEAS FOR  
CHANGE ARE THE MOST SIMPLE.

Metro has been totally transformed to provide  
110,000 sq ft of contemporary workspace.

It is already home to a thriving business  
community which includes Weber-Stephen  
Products, Hansen Technologies, Assala Energy,  
Agoda International, CE Europe, Virgin Hotels  
and Mindspace.



A CONTEMPORARY REFURBISHMENT TO  
CAT+ FITTED OFFICE SPACE.  
AVAILABLE FROM 5,300 SQ FT.



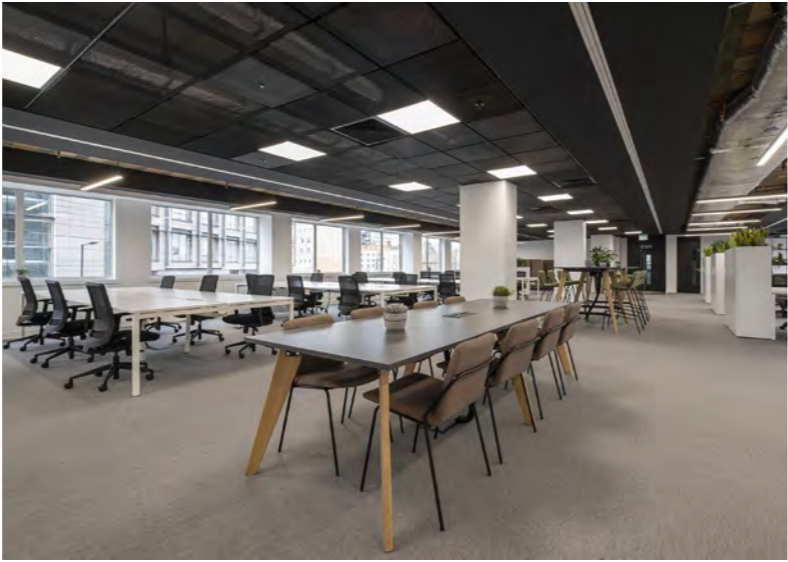
# SPACE TO INSPIRE

- » REMODELLED CONTEMPORARY RECEPTION
- » FULLY FITTED AND FURNISHED
- » COST EFFECTIVE OPEN PLAN OFFICES
- » COMMUNAL CAFE AND WORKSPACE
- » LANDSCAPED AREAS AND OUTDOOR SEATING
- » SHOWERS AND CHANGING FACILITIES
- » PROMINENT LOCATION
- » 4 UNDERGROUND LINES AND NUMEROUS BUS ROUTES



# OFFICE SPACE AVAILABLE FROM 5,300 SQ FT

The part second floor has been comprehensively refurbished to provide excellent fully fitted and furnished office space. The remaining floors can all be refurbished to a similar standard.



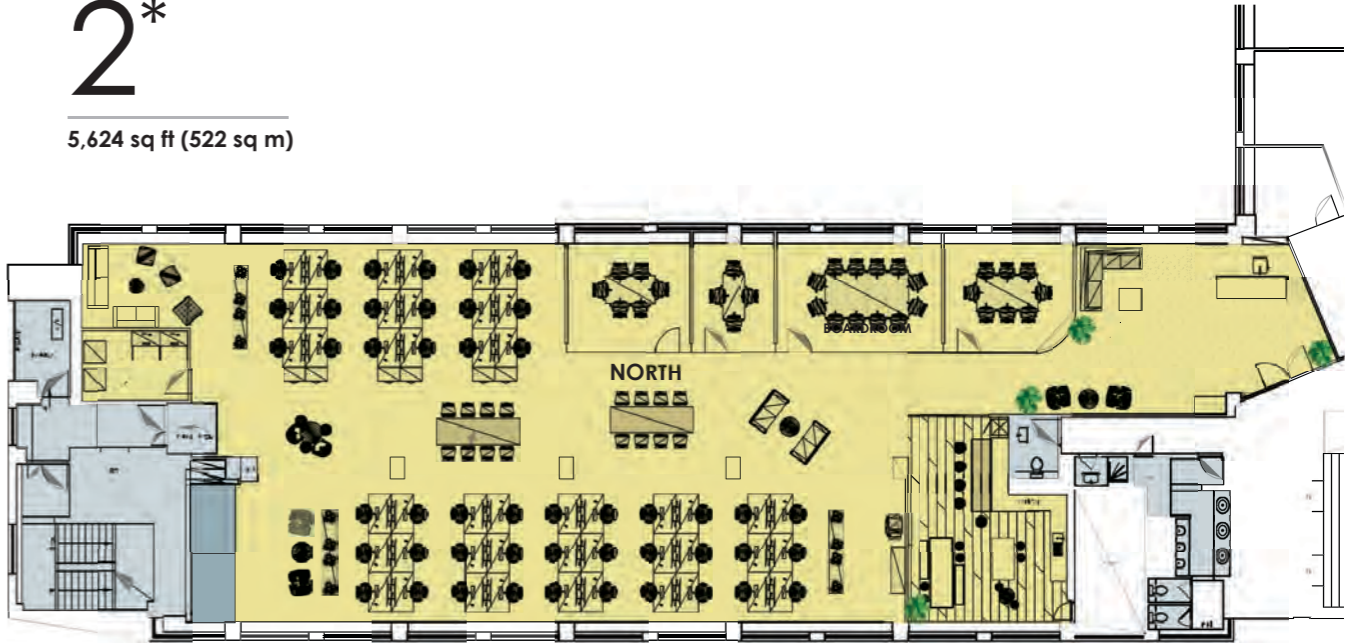
**ACCOMMODATION (NIA)**

Floor	sq ft	sq m
Ninth (East)	5,523	513
Fifth	11,470	1,066
Fourth (East)	5,872	546
Fourth (North)	5,323	494
Second (North)*	5,624	522
<b>Total</b>	<b>33,812</b>	<b>3,141</b>

\* Fully fitted and furnished

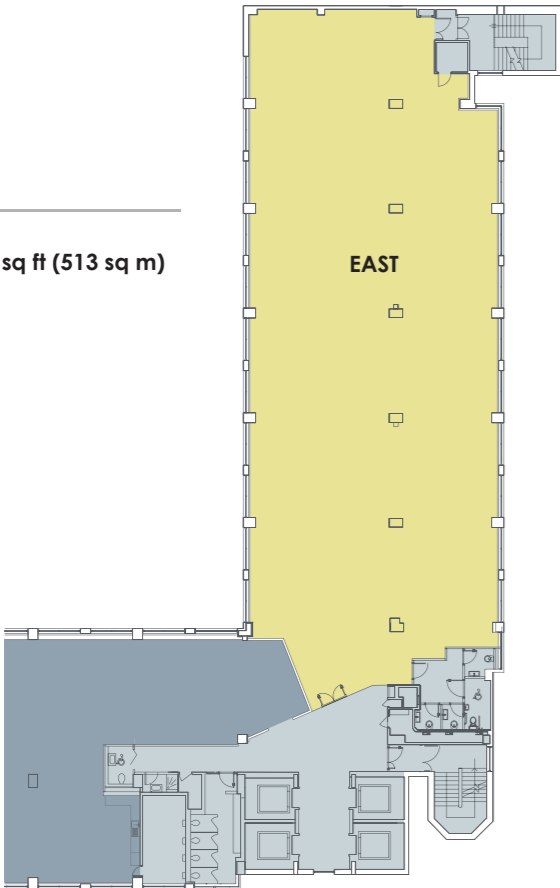
2\*

5,624 sq ft (522 sq m)



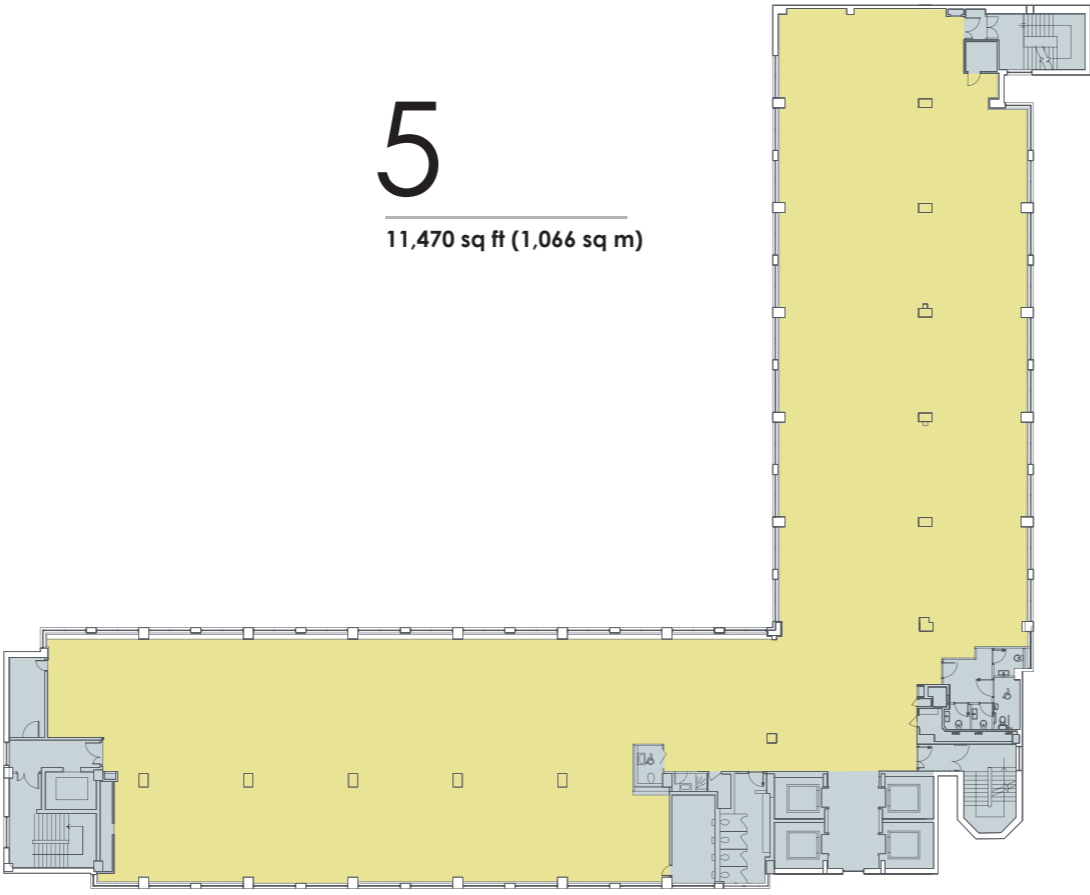
9

East  
5,523 sq ft (513 sq m)



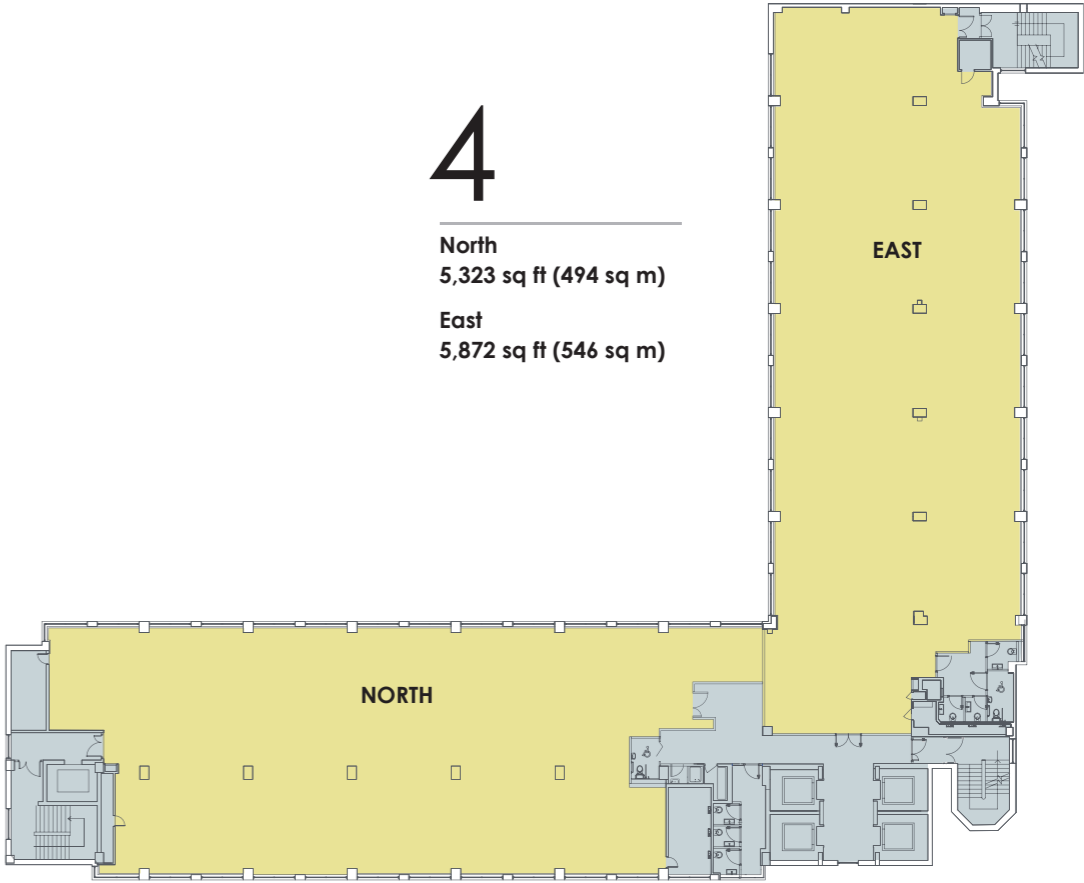
5

11,470 sq ft (1,066 sq m)

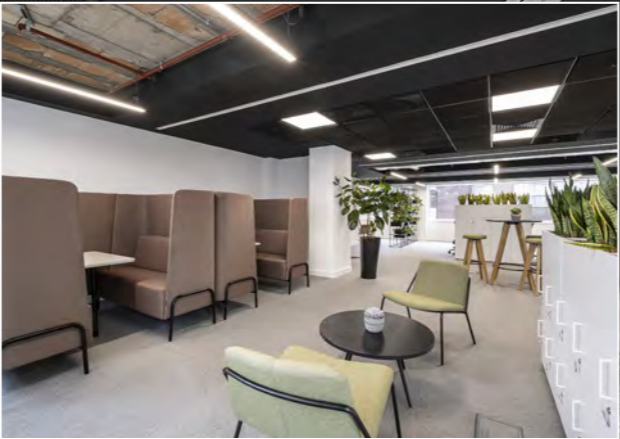


4

North  
5,323 sq ft (494 sq m)  
East  
5,872 sq ft (546 sq m)



# PART SECOND FLOOR OFFICES



VIEW THE SECOND FLOOR VIRTUAL TOUR





# EXCEPTIONAL COMMUNAL SPACE

Metro boasts an abundance of communal break out space and an excellent on-site cafe run by 508 Coffee.

•METRO•



# OUTDOOR SPACE AND URBAN PARK

Metro overlooks an urban park and benefits from new outdoor seating and recreational area at the rear of the building.



MINDSPACE RUN A BOUTIQUE  
SERVICED OFFICE ON THE 6TH,  
7TH AND 8TH FLOORS WHICH CAN  
ACCOMMODATE START UPS AND  
SME'S ON FLEXIBLE TERMS.

MEETING ROOMS AND BREAKOUT  
AREAS CAN BE BOOKED BY METRO  
OCCUPIERS.





## METRO AMENITIES



Contemporary reception



Amenity space and Cafe



Collaborative working areas



Showers and changing facilities



4 x 24 person lifts



24 hour security



Biofilia



Outdoor space



Secure cycle storage



Secure parking



Wellbeing



Fitwel 3\*

## OFFICE SPECIFICATION



Fitted and furnished offices



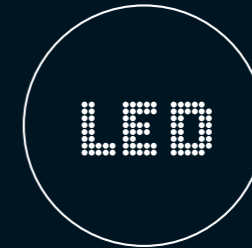
Reception



Open plan cost effective offices



Kitchen/ breakout area



Partially exposed ceilings with LED lighting



Air conditioning



Raised floors



New WC's



EPC:  
Ground Floor B  
Second Floor D

The office specification relates to the second floor which has been fitted and furnished to include a reception, meeting rooms, kitchen and furniture.

Cost effective flexible accommodation is available on the 4th, 5th and 9th floors.

# GET YOUR KICKS IN W6

Working in the hub of Hammersmith you are only a short walk from the many amenities close by.

Enjoy the bustle of street food in Lyric Square, pop out for a quick coffee or enjoy the tranquil setting of the Thames.

At night the pubs, restaurants and bars come alive and you can finish your day watching groundbreaking theatre at the Lyric or bands playing live at the legendary Hammersmith Apollo.

↓ **A London landmark**  
One of London's most recognisable bridges.



← **Historic Pubs**  
So many choices to enjoy your favourite tipple.



← **Coffee culture**  
Coffee to go or catch up in the many bars.

↓ **Thameside tranquility**  
Go for lunch and watch the boats go by.



↑ **Eventim Apollo**  
An historic music & entertainment venue.



↑ **Westfield**  
A short journey to your one stop shop with over 350 retailers.



← **River sport**  
Some of the oldest rowing clubs nearby.



← **Michelin Star Restaurant**  
The River Café is an iconic Italian restaurant.



→ **Fitness for all**  
Fitness clubs to suit you.



↑ **Retail therapy**  
A short walk to the latest fashions.



↑ **Lyric Theatre**  
Eat, drink and watch groundbreaking productions.



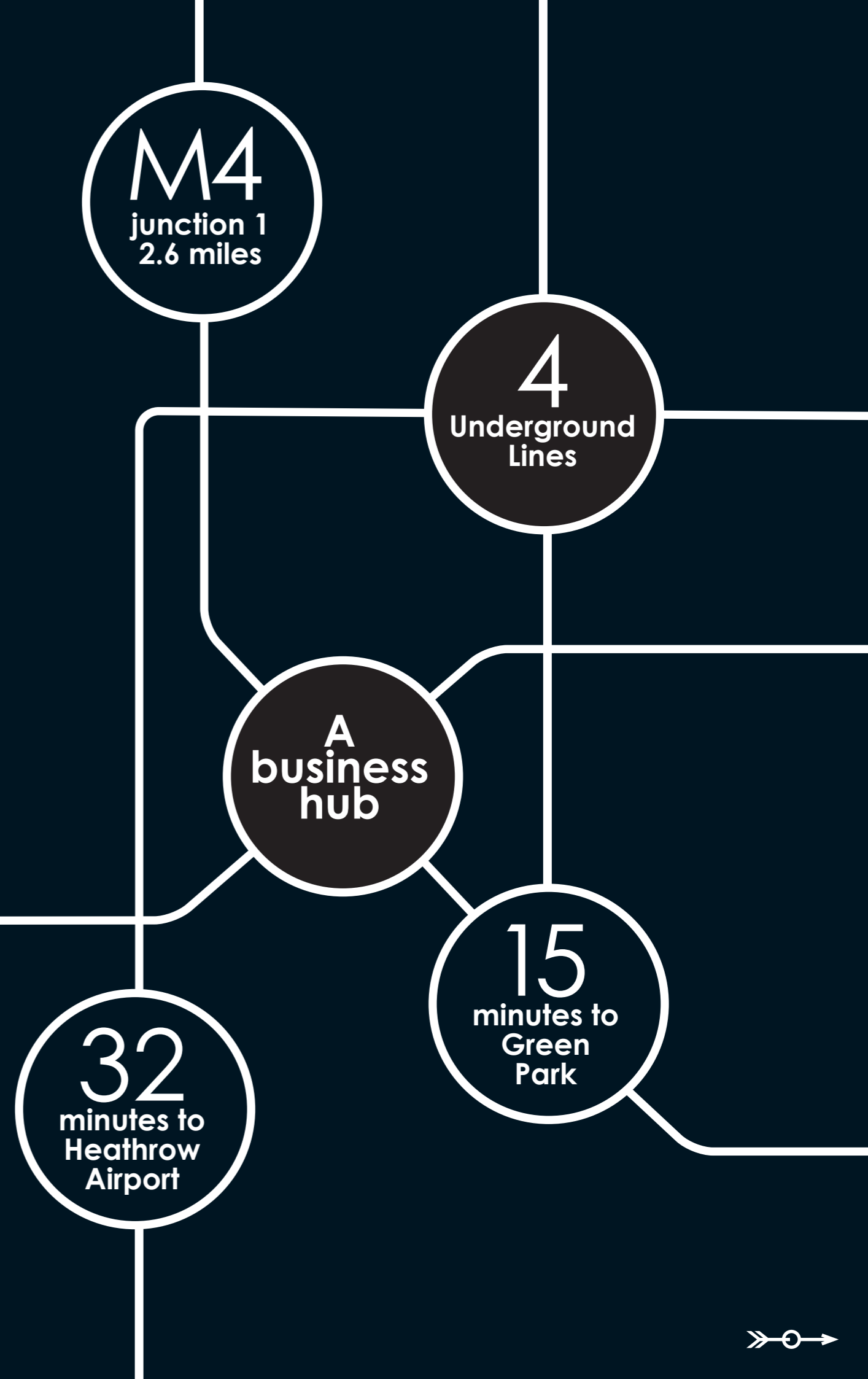
↑ **Outdoor markets**  
Enjoy fresh farm produce at the weekly market and world cuisine amongst the street food stalls.



← **Outdoor spaces**  
For an informal meet or unwind after work.

# HOW WELL CONNECTED IS YOUR BUSINESS?

There is a very good reason why Hammersmith is a global business destination - it's so well connected.



# ON YOUR DOORSTEP AND BEYOND

With so much close by you really are spoilt for choice.

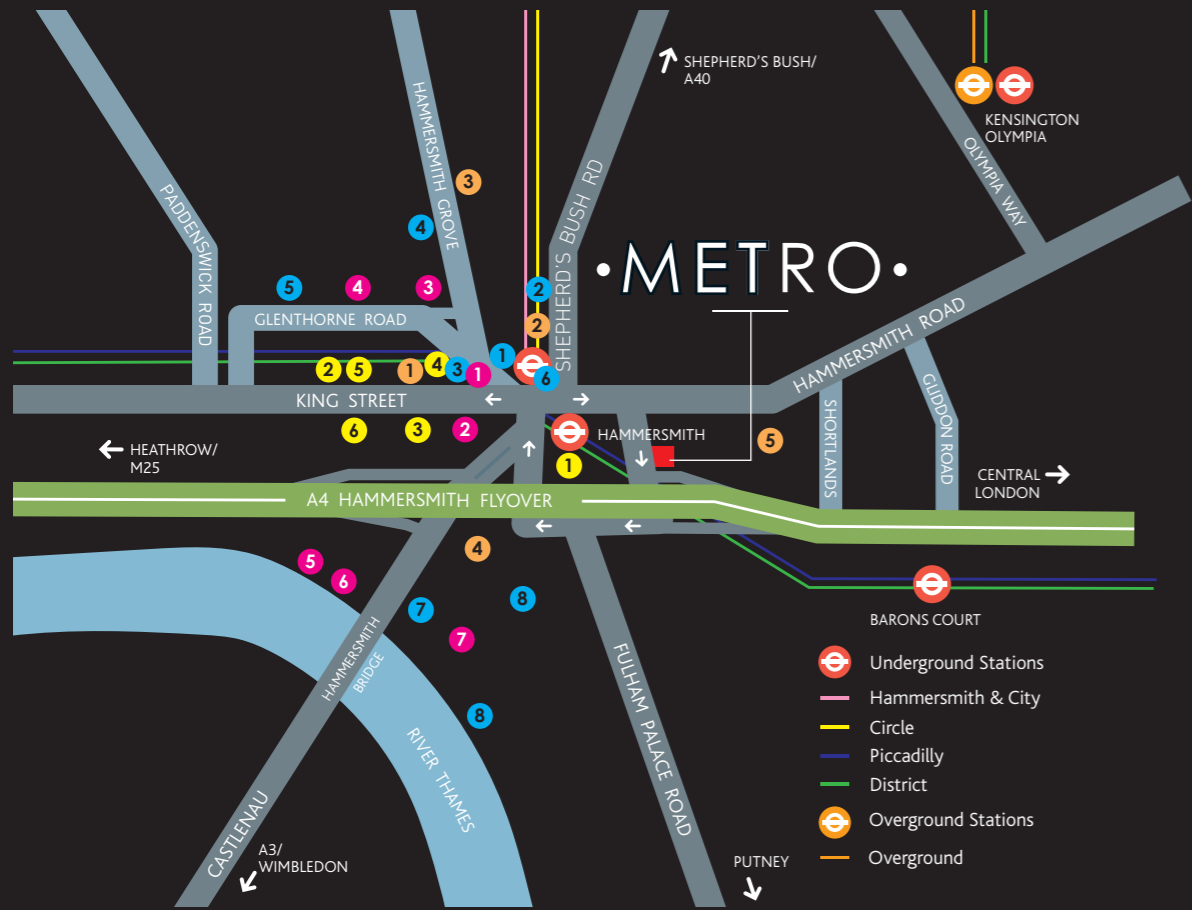
Within minutes you can be in the the City for business or the enjoying the bright lights for a night out in the West end.

In 32 minutes, by underground, you can be at Heathrow, one of the world's busiest airports with 80 airlines flying to over 180 destinations.

Prefer to take the car the M4 motorway is only 3.2 miles away giving you fast access around London and beyond.

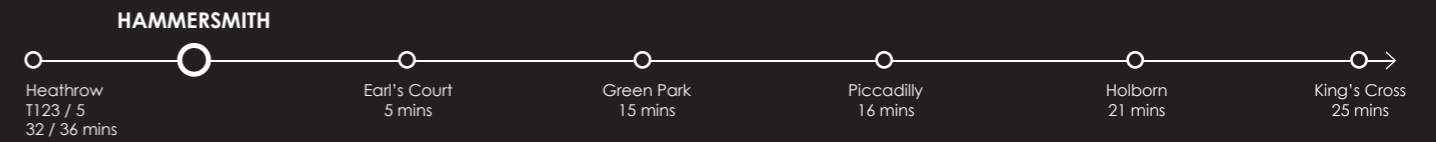
## BY ROAD

Chiswick	2.5 miles
M4 (J1)	3.2 miles
West End	3.8 miles
City	6.4 miles
Heathrow Airport	11.8 miles
M25	12.4 miles

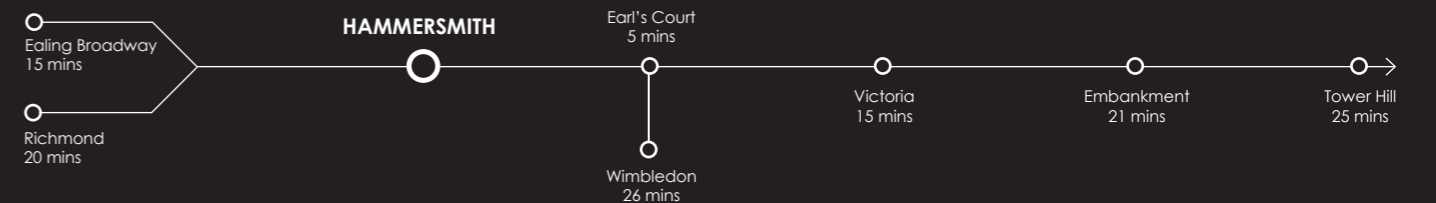


- | Retail            | Restaurants & Cafés           | Pubs & Bars        | Fitness & Leisure    |
|-------------------|-------------------------------|--------------------|----------------------|
| 1 The Broadway    | 1 Bill's & Byron              | 1 The Swan         | 1 Lyric Theatre      |
| 2 King's Mall     | 2 Wagamama                    | 2 The Hop Holes    | 2 Pure Gym           |
| 3 Marks & Spencer | 3 Le Petite Bretagne Creperie | 3 Dartmouth Castle | 3 Fitness First      |
| 4 Lyric Square    | 4 Bertotti                    | 4 Stonemasons Arms | 4 Hammersmith Apollo |
| 5 Primark         | 5 Poppy's Thai                | 5 The Rutland      | 5 Virgin Active      |
| 6 TK Maxx         | 6 Nando's                     | 6 Blue Anchor      |                      |
|                   | 7 Riverside Studios           | 7 The Chancellors  |                      |
|                   | 8 The River Café              |                    |                      |

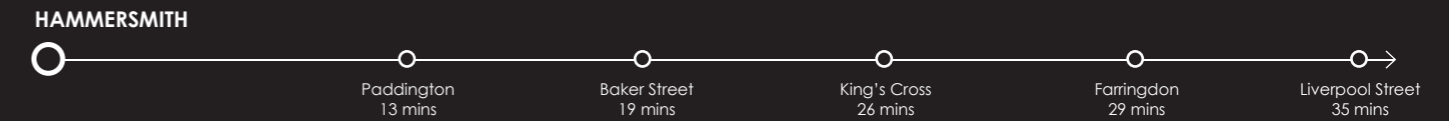
## Piccadilly Line



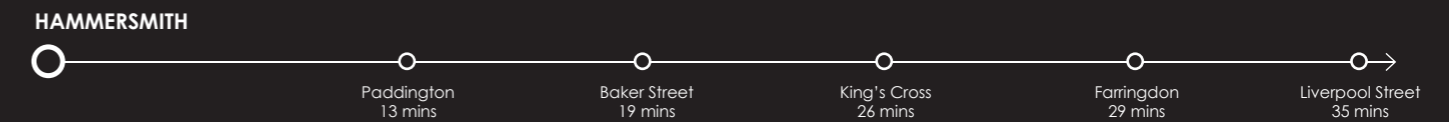
## District Line



## Hammersmith & City Line



## Circle Line



Paddington Station

Kensington Olympia

Hyde Park

West End

The City

The Shard

Docklands

Battersea Power Station

# THE METROPOLIS

Hammersmith plays a major part in the Capital City as a significant economic, political, and cultural centre.

Another reason why there are such a diverse range companies choosing Hammersmith as their UK base.

•METRO•

NOVOTEL HOTEL

PREMIER INN

BUS STATION

HAMMERSMITH

HAMMERSMITH

EVENTIM APOLLO

METRO

## LOCAL OCCUPIERS

- 1 Dunnhumby
- 2 Siemens
- 3 Medidata  
Wework  
CAA  
Perform Media
- 4 Winton Capital
- 5 The Office Group
- 6 Fox International Channels  
UKTV  
Philip Morris  
Accor Hotels
- 7 A&E Networks  
Kambi Sport
- 8 Victoria Beckham
- 9 Etihad Airlines
- 10 Hana  
Achilles
- 11 Formula E  
Love Holidays  
Hammersmith & Fulham B. C.
- 12 Immediate Media
- 13 Harrods
- 14 Virgin Media
- 15 GE
- 16 Disney



# • METRO •

HAMMERSMITH W6



**Richard Harding**  
richardharding@brayfoxsmith.com  
07730 817019

**Jordan Willcock**  
jordanwillcock@brayfoxsmith.com  
07745 054909

**Edward Smith**  
edward.smith@realestate.bnpparibas  
07836 656538

**Rebecca Hewitt**  
rebecca.hewitt@realestate.bnpparibas  
07776 636539