





HOUSE & SON

Residential Sales, Lettings, Property Management, Surveys & Valuation. Leading Independent Property Professionals Since 1939.

An exceptional opportunity to own this spacious and charming turn-of-the-century detached house, offering three to four bedrooms, located in the heart of Winton.

This delightful home features off-road parking and a welcoming reception hallway with ample storage. The ground floor includes two versatile reception rooms (one of which can serve as a fourth bedroom), a well-appointed galley kitchen, a bright conservatory, and a newly constructed, high-spec garden room (built in 2024), perfectly situated within the expansive, west-facing private rear garden.

Upstairs, there are three generously sized bedrooms and a family bathroom, providing plenty of comfort and space.

Other notable features include double glazing throughout, modern gas-fired central heating, and ample storage options, including a double shed. Ideally situated just a short stroll from local shops, bus routes, and within walking distance of several excellent schools and public recreation areas, this home blends convenience with charm.

With motivated sellers, this is an ideal family home. Don't miss out-call today to register your interest!



OUTSIDE FRONT

Brick boundary wall to the front with driveway to the side.

ENTRANCE

UPVC double glazed front door leading into reception hallway.

RECEPTION HALLWAY

With an inner hallway, featuring original tiled flooring, a panelled wooden front door, stairs to the first floor, with storage space underneath and a double radiator.

LOUNGE

14' 6" into bay to recess" x 12' 0" (4.42m x 3.66m)

UPVC double glazed bay window to front, double radiator and multiple socket points.

RECEPTION TWO/BEDROOM FOUR

12' 3" into recess" x 9' 10" (3.73m x 3m)

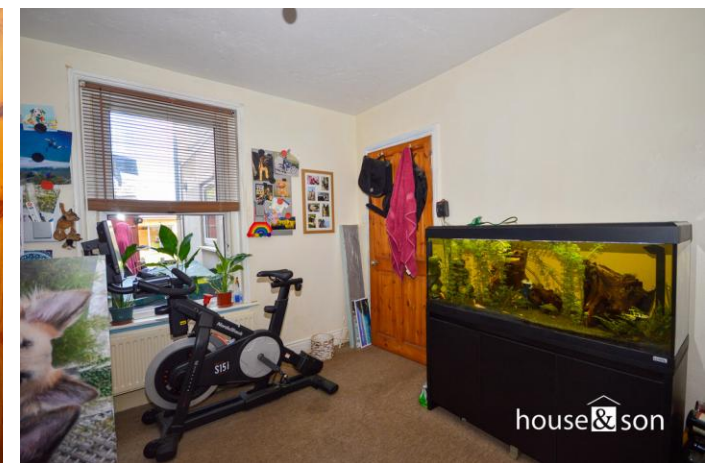
UPVC double glazed window to the rear, double radiator, chimney breast with recess and multiple socket points.

KITCHEN

11' 2" x 8' 11" (3.4m x 2.72m)

Modern fitted kitchen with a range of base and wall mounted units, including a concealed gas-fired boiler, with space for an American style fridge/freezer, washing machine and a slim line dishwasher, with a tall cupboard housing an integrated electric fan oven, a five ring gas fired hob inset into worktop surfaces, with a chimney filter hood over, a one and a half bowl stainless steel sink with a chrome mixer tap, and UPVC double glazed window to the side, and a UPVC double-glazed French door to the rear providing access into the conservatory. Multiple socket points.







CONSERVATORY

13' 6" x 8' 3" (4.11m x 2.51m)

A timber frame conservatory with UPVC double-glazed windows and a UPVC double-glazed sliding door to the side. Power and light.

FIRST FLOOR LANDING

18' 7" x 5' 7" (5.66m x 1.7m)

UPVC double-glazed window to the side and loft hatch. Loft accessed via ladder.

BEDROOM ONE

14' 5" x 10' 8" (4.39m x 3.25m)

UPVC double-glazed bay window to the front, chimney breast with original cast iron fireplace with mantle and double radiator. Multiple socket points.

BEDROOM TWO

12' 4" x 9' 9" (3.76m x 2.97m)

UPVC double-glazed window to rear, double radiator underneath. Chimney breast with original cast iron fireplace. Multiple socket points.

BEDROOM THREE

11' 3 into door recess" x 9' 2" (3.43m x 2.79m)

UPVC double-glazed window to side and double radiator. Multiple socket points.

BATHROOM

8' 6" x 4' 9" (2.59m x 1.45m)

A white three-piece suite comprising a bath with a side panel, overhead shower, a pedestal wash hand basin, low-level WC, tiled walls, extractor fan and an obscure UPVC double-glazed window to the front.

REAR GARDEN

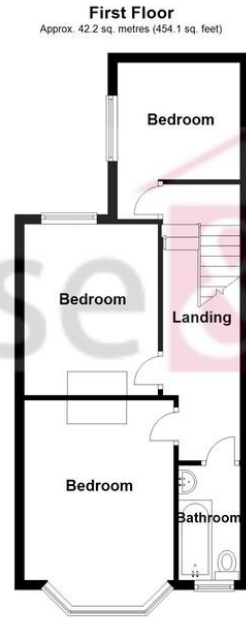
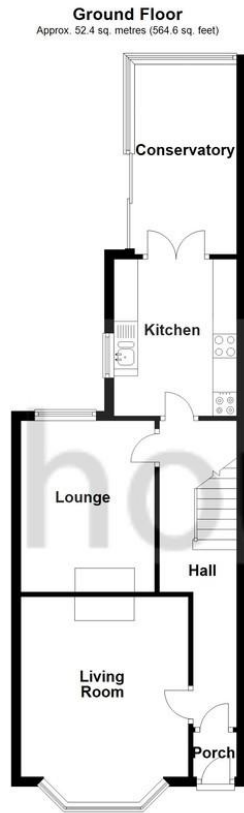
A large, level, westerly aspect private rear garden, mostly laid to lawn, with side access. Enclosed by fencing and brick boundary walls, mostly laid to lawn but with a variety of mature planting, providing privacy and screening. Housing a double timber shed, with light and power and also providing access into.

GARDEN ROOM

13' 0" x 9' 10" (4m x 3m)

Constructed in 2024 this garden room is fully insulated, waterproof and over clad. The building itself has a 15-year warranty and the EDP roof has a 50-year guarantee. Accessed by floor-to-ceiling double-glazed French doors, with floor-to-ceiling windows on either side, the garden room benefits from its own power supply, fed from an armoured cable leading from its own electrical consumer unit, located in the double shed, feeding four double sockets. Additionally, the garden room benefits from a category six cabled internet supply, fed into its double sockets. Externally there is a 5ft deck to the front, external courtesy lighting and an external double socket.





Total area: approx. 106.7 sq. metres (1148.0 sq. feet)

Bournemouth Energy Floor Plans are provided for illustration/identification purposes only. Not drawn to scale, unless stated and accept no responsibility for any error, omission or mis-statement. Dimensions shown are to the nearest 7.5 cm / 3 inches. Total approx area shown on the plan may include any external terraces, balconies and other external areas. To find out more about Bournemouth Energy please visit www.bournemouthenergy.co.uk (Tel: 01202 556006)
Plan produced using PlanUp.



English | [Cymraeg](#)

Energy performance certificate (EPC)

5 Leslie Road BOURNEMOUTH BH9 2JH	Energy rating	Valid until:	11 September 2034
	E	Certificate number:	8100-5625-0522-6491-3143

Property type	Detached house
Total floor area	84 square metres

348 Wimborne Road, Bournemouth,
Dorset, BH9 2HH

www.houseandson.net
winton@houseandson.net
01202 244844

Agents Note: Whilst every care has been taken to prepare these sales particulars, they are for guidance purposes only. All measurements are approximate and for general guidance purposes only and whilst every care has been taken to ensure their accuracy, they should not be relied upon and potential buyers are advised to recheck the measurements.