



## Olinda House 10 Rating Row, Beaumaris, LL58 8AF

**£645,000**

A substantial six bedroom Town House, listed for its contribution to the historical integrity of Rating Row and named after the iron steamship the Olinda, wrecked off Anglesey in 1854. Sympathetically restored by the present owners to an exacting standard throughout. The property oozes charm and character throughout, retaining many original features, generous sized rooms, high ceilings and a superb combination of modernisation for contemporary living.

As soon as you enter the property you will be greeted with a splendid hallway and original balustrade staircase that leads to the upper floors. The main accommodation briefly comprises of: Large dining room with open fire, contemporary breakfast kitchen with opening to the sitting room with central multi-fuel stove, cloakroom WC and cellar. First floor: Spacious landing area leading to a 20' front lounge, main bedroom with en-suite shower room/WC, guest bedroom with Jack & Jill Victorian style bathroom suite and dressing room/Bedroom 3. Second Floor Former Servant Quarters: Landing/sitting area, three double bedrooms and shower room/WC.

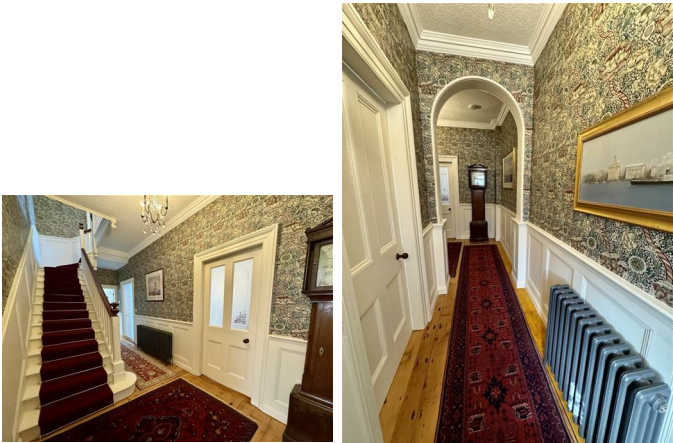
An outstanding Town House, combining a thoughtful collaboration of modern and traditional which must be viewed to be fully appreciated.

### Entrance Vestibule



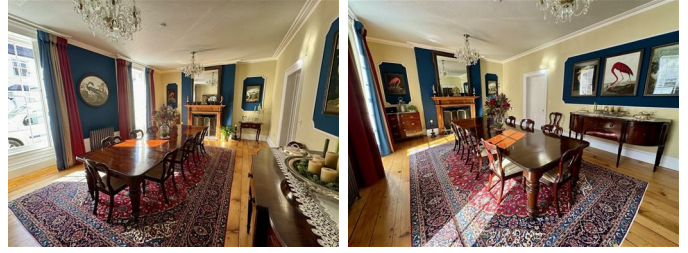
Impressive entrance door (replica to 10 Downing Street) with fan light above. Vestibule area with period style tiled flooring, decorative coving and pendant light. Original door with decorative glass opening to the hallway.

### Reception Hallway ceiling height 9'10" (ceiling height 3.01)



Having an impressive original balustrade staircase that leads up to the first floor landing area, complemented with Victorian stair runner carpet and stair rods. Timber panelling to dado level, stripped original pine flooring, two cast iron radiators, decorative coving, ceiling roses and two pendant lights. Mains smoke alarm. Timber panel door with stairs leading down to the basement cellar providing excellent storage space.

### Dining Room 22'2" x 15'7" ceiling height 9'10" (6.78 x 4.76 ceiling height 3.01)



A larger than average reception room with high ceiling, decorative coving and two pendant lights. Original timber fire surround with deep recess and slate hearth. Two large sash windows with shutters to the front elevation, allowing plenty of natural light. Exposed stripped pine flooring, two cast iron radiators and two doors to the reception hallway.

### Breakfast Kitchen 13'11" x 11'1" + deep recess (4.25 x 3.39 + deep recess)



A modern kitchen with a wealth of high gloss fronted wall and base storage units, complemented with quartz work tops and chrome trim seamless splashbacks. Inset 'Franke' sink unit with mixer tap. Quality appliances to include: 'Capele' white ceramic induction hob with extractor over, integrated 'Whirlpool' fridge freezer, built-in 'Neff' double ovens and integrated 'Neff' washing machine and dishwasher. Feature PVC double glazed skylight allowing natural light to the kitchen area. Plinth electric fan heaters, tiled flooring, downlights, vertical radiator and mains heat sensor. Two feature openings to the sitting room with central through fireplace housing cast iron multi fuel set on slate hearth.

### Sitting Room 14'2" x 13'11" (4.33 x 4.26)



Having a feature through cast iron multi fuel burner. Timber framed double glazed window and side entrance door to the covered passageway. Wall mounted vertical radiators, exposed pine flooring, coving to ceiling, down lights and two wall light points. Door to hallway.

### Cloakroom WC 7'8" x 4'11" (2.34 x 1.52)

Period style suite comprising: WC with overhead cistern and pedestal wash hand basin with hot and cold taps. Coving, down light, tiled flooring, fitted bench and shelf.

### First Floor Landing Area



A larger than average balustrade landing area with decorative stained glass sky light, deep coving with ceiling rose, pendant light and mains smoke alarm. Exposed pine floor boards and timber panelling to dado level. Original timber panel doors to all bedrooms, bathroom and 180° panel door opening to hall with stairs leading up to the former servants quarters.

### Lounge 20'9" x 14'4" ceiling height 11'10" (6.35 x 4.38 ceiling height 3.62)



A generous lounge with decorative ornate high ceiling, deep coving, two pendant lights and two wall light points. Sandstone fireplace housing 'Broseley' cast iron gas fire set on sandstone hearth. Two sash windows to the front elevation, exposed stripped pine floorboards and two cast iron radiators.

### Main Bedroom 19'11" x 15'8" ceiling height 11'9" (6.09 x 4.79 ceiling height 3.60)



Having a sash window to the front elevation, exposed stripped pine flooring and original slate fireplace with cast iron inset and slate hearth. Cast iron radiator, picture rail, deep coving, ceiling rose and pendant light. Door to:-

**En-Suite Shower Room/WC 7'9" x 7'4" max (2.37 x 2.24 max)**



A stunning 'Period Interiors' suite comprising: 'Vitra' fitted button flush WC, vanity wash hand basin with mixer tap and night light draw unit. Walk in shower area with glass screen and seamless granite style splash backs, along with a digital dual shower unit. Complemented with fully tiled walls and matching heated flooring. Wall mounted mirror fronted cabinet with lighting, chrome towel radiator and downlights.

**Guest Bedroom 14'0" x 13'6" (4.28 x 4.12)**



Original slate fireplace with cast iron inset and slate hearth. Double glazed timber framed sash window to the rear elevation with views of Beaumaris Castle. Cast iron radiator and pendant light. Door to:

**Jack & Jill Bathroom/Shower/WC 13'11" x 9'8" (4.25 x 2.95)**



A Victorian style 'Burlington' suite comprising: Free standing claw foot bath with mixer tap and shower attachment, WC with overhead cistern, vanity wash hand basin and walk in shower area with tiled walls, glass screen and thermostatically controlled shower unit. Bespoke penny flooring set in clear epoxy resin, timber panelling to dado level, heated towel radiator and cast iron radiator. Double glazed part frosted timber framed sash window. Two wall light points, pendant light and extractor fan. Door to hallway.

**Bedroom 3/Dressing Room 14'0" x 11'0" (4.28 x 3.37)**



Having a bank of full height wardrobes providing excellent storage space with mirror/wood effect fronted sliding doors. Double glazed timber framed sash window to the rear elevation. Slate fireplace with cast iron inset and slate hearth. Cast iron radiator and pendant light.

**Second Floor - Former Servants Quarters**

**Landing/Sitting Area 17'5" x 8'3" (5.32 x 2.53)**



Spacious landing area, currently set out as a sitting room. Radiator, mains smoke alarm and inset downlights. Stairs and exit door to roof space. Doors to bedrooms and shower room/WC.

**Bedroom 4 14'0" x 11'0" (4.28 x 3.36)**



Slate feature fireplace with cast iron inset and slate hearth. Exposed purlin, pendant light and radiator. PVC double glazed window to the rear elevation.

**Bedroom 5 14'0" x 11'0" (4.28 x 3.36)**



'Twyfords' wash hand basin. Slate feature fireplace with cast iron inset basket and slate hearth. Exposed purlin, inspection hatch to roof space, pendant light and radiator. PVC double glazed window to the rear elevation.

**Bedroom 6/Office 13'9" x 11'8" (4.21 x 3.57)**



Slate feature fireplace with cast iron inset and slate hearth. Exposed purlin, downlights and radiator. PVC double glazed window to the rear elevation. Built in storage cupboard.

**Shower Room/WC 8'3" x 5'6" + deep recess (2.53 x 1.68 + deep recess )**

Victorian style pedestal wash hand basin, WC and shower cubicle with seamless splash backs and 'Mira Sport' shower unit. 'Velux' window, downlights and radiator. Door to attic room.

**Attic Room**

Floored with power and light. Easy access to heating system - Wall mounted 'Worcester' gas boiler and vented 'Gledhill' pressurised hot water cylinder.

**Side Passageway 40'5" x 7'4" average (12.34 x 2.24 average)**



A secondary side Passageway entrance gives a delightful covered area to sit outside with PIR lighting and side entrance door to the property. This area also serves as a foot right of way to 1 Olinda Cottage, located to the rear of Olinda House.

**Agents Notes**

The tasteful interior design of Olinda house includes William Morris wallpaper and Farrow & Ball/ Little Green paintwork.

**Tenure**

We are advised the property is Freehold, and this will be confirmed by the vendor's conveyancer.

**Services**

All mains services connected.  
Gas central heating system (Worcester 40 CDi boiler) - Zoned to all floors.

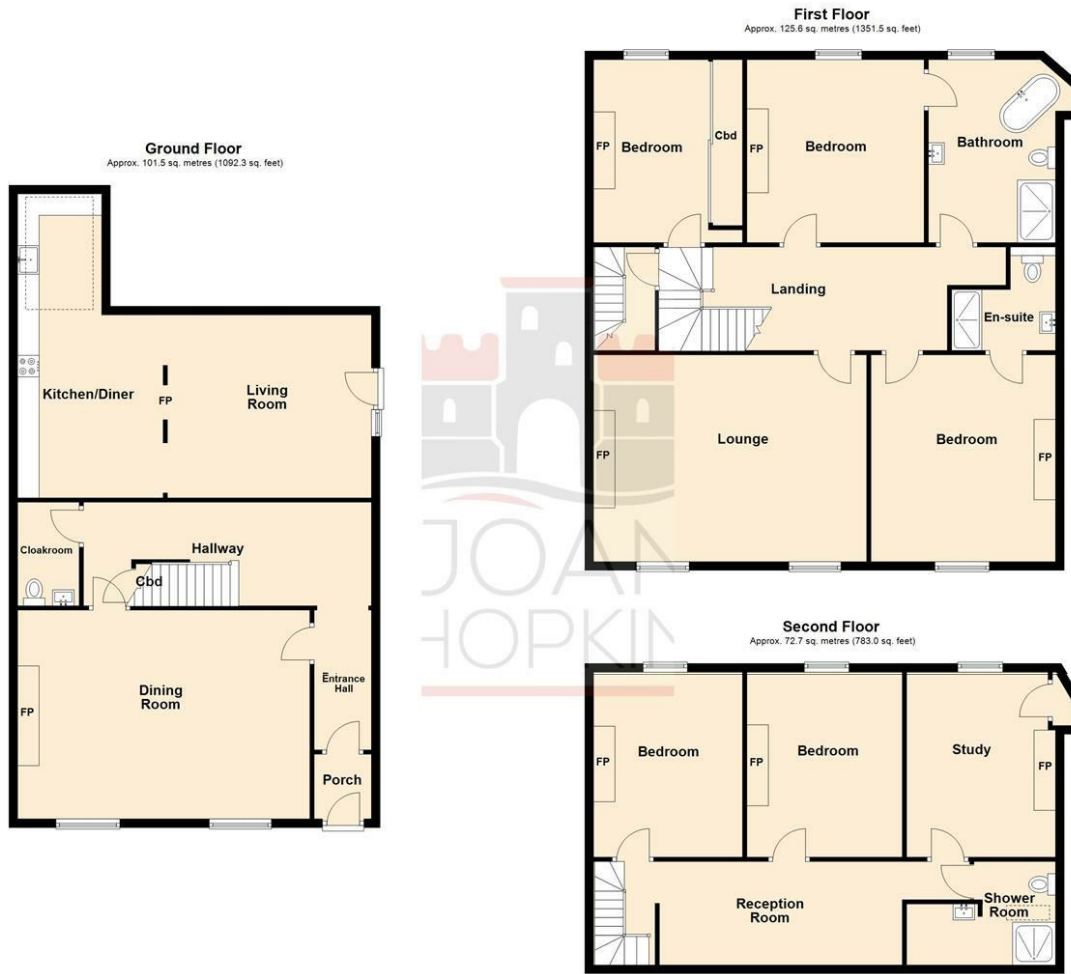
**Energy Rating**

TBC

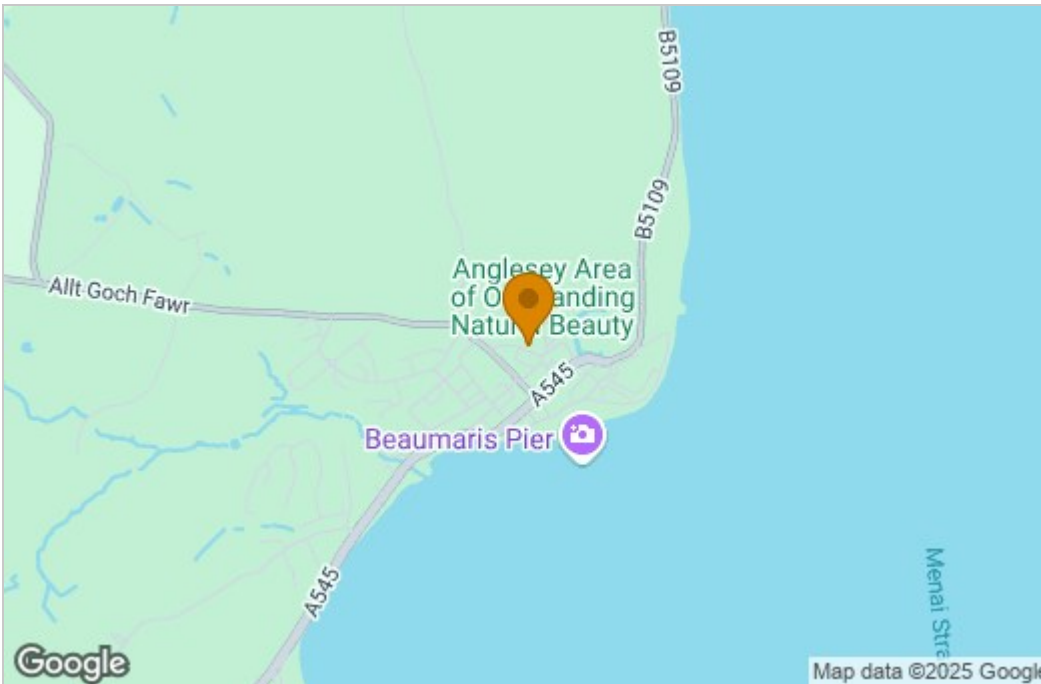
**Council Tax**

Band F.

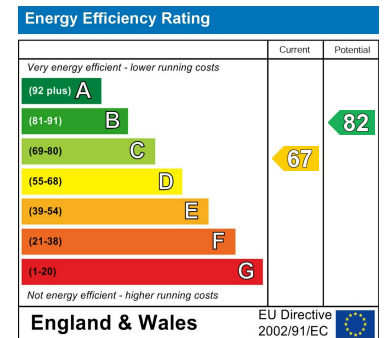
# Floor Plan



# Area Map



# Energy Efficiency Graph



These particulars, whilst believed to be accurate are set out as a general outline only for guidance and do not constitute any part of an offer or contract. Intending purchasers should not rely on them as statements of representation of fact, but must satisfy themselves by inspection or otherwise as to their accuracy. No person in this firm's employment has the authority to make or give any representation or warranty in respect of the property.