



Landau Close, Caldicot

2 Bedrooms
1 Bathrooms
1 Receptions

£215,000

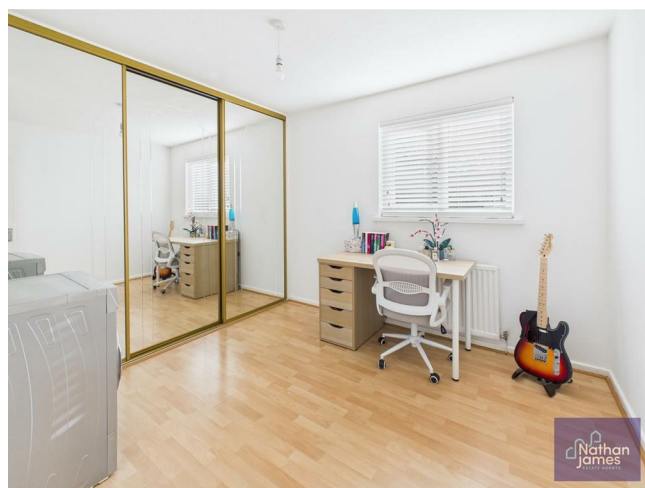
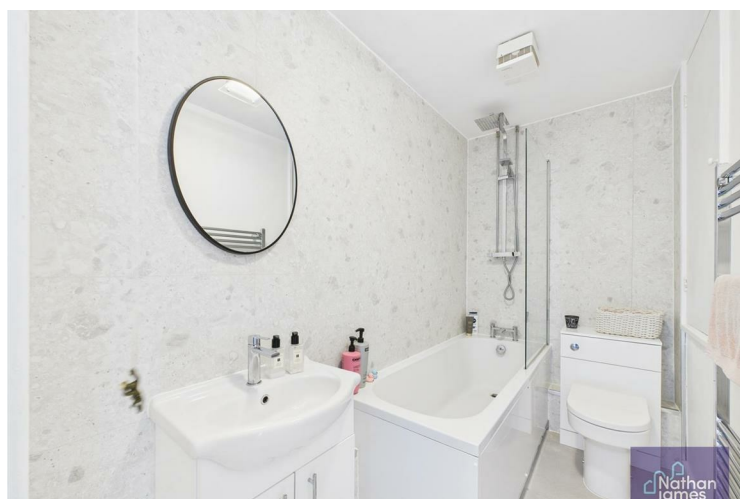


Landau Close, Undy, this delightful house presents an excellent opportunity for those seeking a comfortable and modern living space. The property boasts two generously sized double bedrooms, perfect for families or individuals looking for extra room.

The heart of the home is an inviting open plan kitchen diner, which creates a warm and sociable atmosphere, ideal for entertaining guests or enjoying family meals. The newly fitted bathroom adds a touch of contemporary elegance, ensuring that your daily routines are both stylish and convenient.

Outside, the enclosed rear garden offers a private sanctuary, perfect for relaxation or outdoor activities. Additionally, the property benefits from two dedicated parking spaces, providing ease and accessibility for you and your guests.

This house is not just a place to live; it is a home that combines comfort, style, and practicality in a lovely setting. With its modern features and thoughtful layout, it is sure to appeal to a wide range of buyers. Do not miss the chance to make this wonderful property your own.



Lounge
11'8 x 15'7

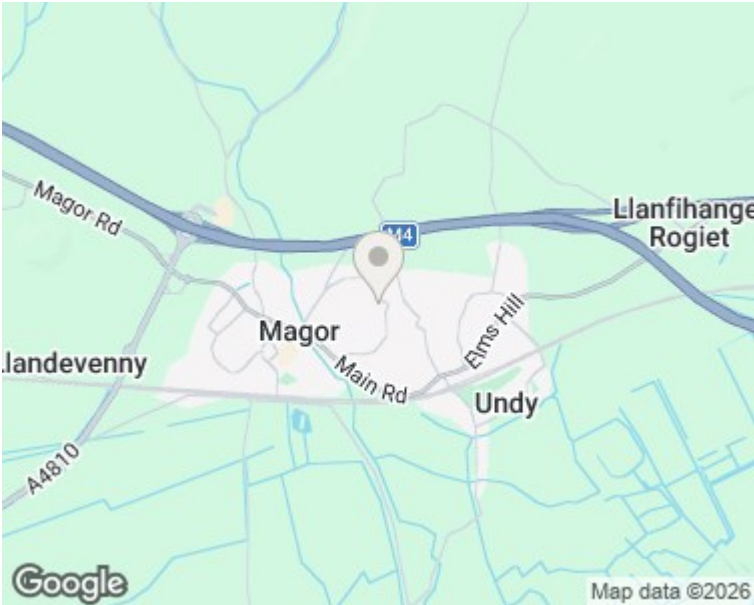
Kitchen
11'8 x 8'9

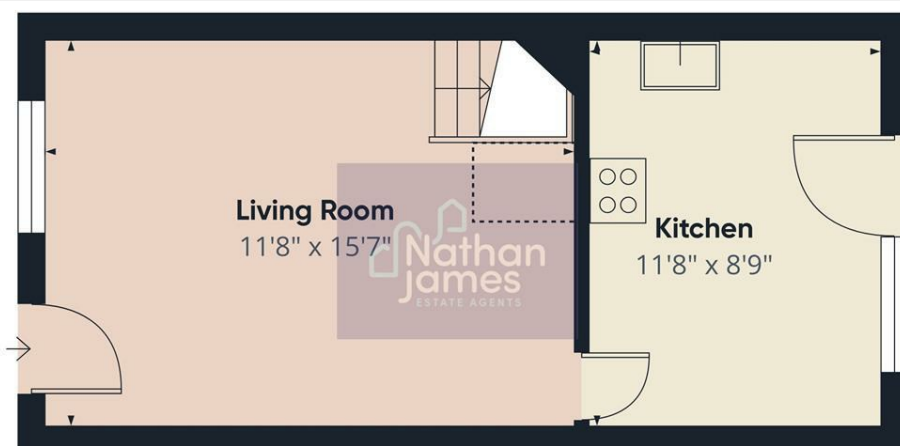
Landing
2'7 x 6'0

Bedroom 1
11'8 x 8'10

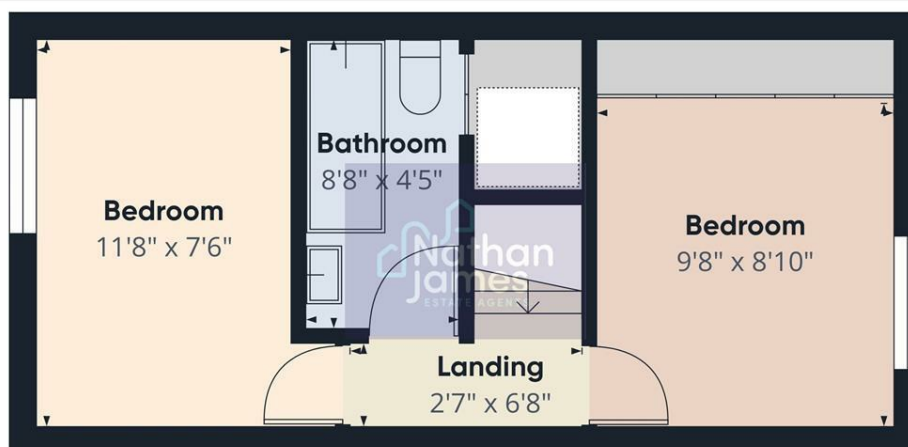
Bedroom 2
11'8 x 7'6

Bathroom
8'8 x 4'5





Floor 0



Floor 1



Approximate total area[®]
549 ft²

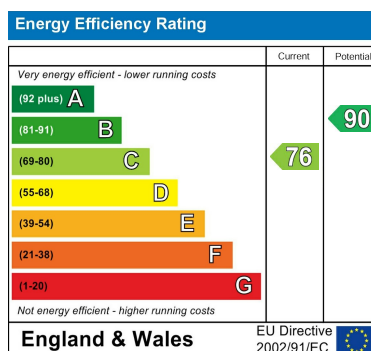
Reduced headroom
6 ft²

(1) Excluding balconies and terraces

Reduced headroom
Below 5 ft

Calculations reference the RICS IPMS 3C standard. Measurements are approximate and not to scale. This floor plan is intended for illustration only.

GIRAFFE360



8 Newport Road
Caldicot
Monmouthshire
NP26 4HX
01291 421600

nj@nathanjamesestateagents.co.uk
nathanjamesestateagents.com