



## Mill Lane, Caldicot

3 Bedrooms  
1 Bathrooms  
2 Receptions

£269,995





Nestled in the charming area of Mill Lane, Caldicot, this delightful end terrace house presents an excellent opportunity for families and first-time buyers alike. With its inviting façade and well-maintained exterior, this property boasts a warm and welcoming atmosphere.

Inside, you will find a spacious reception rooms, perfect for entertaining guests or enjoying quiet family evenings. The beautifully appointed versatile kitchen/ dining space can be tailored to suit your lifestyle, whether you envision a cosy or a formal dining area. The natural light that floods through the windows enhances the inviting ambiance throughout the home.

The property features three well-proportioned bedrooms, providing ample space for rest and relaxation. Each room offers a comfortable retreat, ideal for unwinding after a long day. The layout is thoughtfully designed to accommodate family living, ensuring that everyone has their own personal space.

Completing this charming home is a well-appointed bathroom, designed for both functionality and comfort. It serves as a convenient sanctuary for your daily routines. Featuring front and rear low maintenance gardens.

Situated in a desirable location, this property benefits from easy access to local amenities, schools, and transport links, making it an ideal choice for those seeking a vibrant community atmosphere. The surrounding area offers a blend of convenience and tranquillity, perfect for enjoying the best of both worlds.

In summary, this end terrace house on Mill Lane is a wonderful opportunity to create lasting memories in a lovely home. With its generous living spaces, three bedrooms, and prime location, it is sure to attract interest from a variety of buyers. Do not miss the chance to make this charming property your own.





Porch  
4'0x5'9

Lounge  
11'6x15'11

Kitchen/Diner  
19'3x15'0

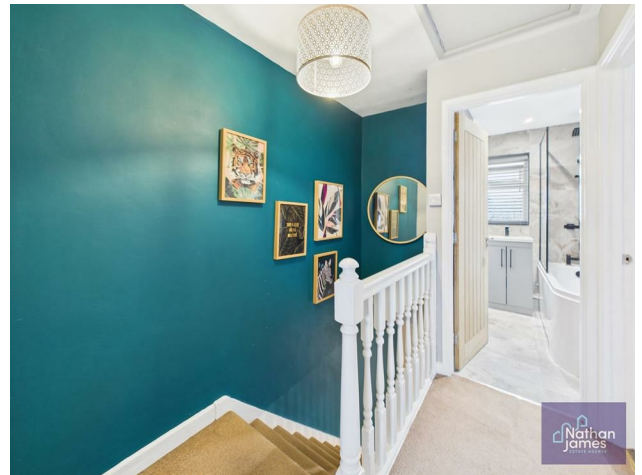
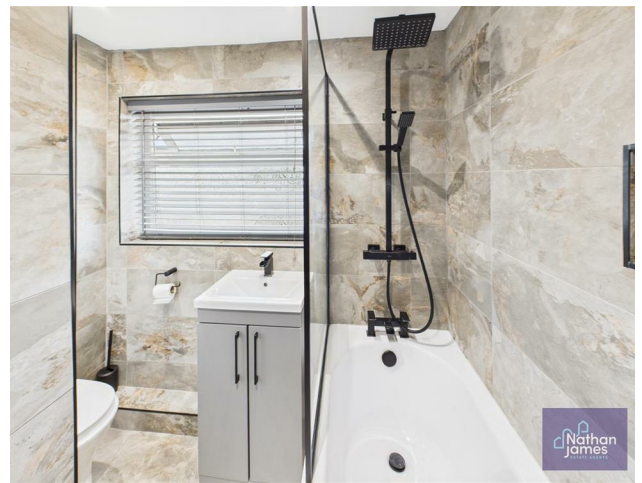
Pantry/ Utility  
4'6x6'3

Master Bedroom  
12'10x8'5

Bedroom Two  
10'1x8'0

Bedroom Three  
8'9x5'10

Family Bathroom  
7'0x4'6





Entry  
4'0" x 5'9"

Living Room  
11'6" x 15'11"

Kitchen  
19'3" x 15'0"

4'6" x 6'3"

Floor 0

Approximate total area<sup>®</sup>  
871 ft<sup>2</sup>

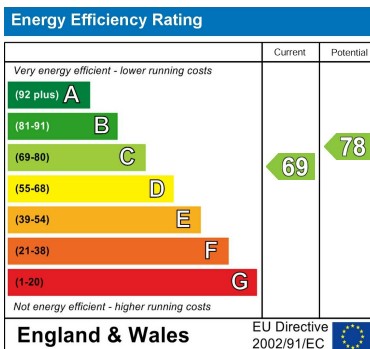


Floor 1

(1) Excluding balconies and terraces

Calculations reference the RICS IPMS 3C standard. Measurements are approximate and not to scale. This floor plan is intended for illustration only.

GIRAFFE360



8 Newport Road  
Caldicot  
Monmouthshire  
NP26 4HX  
01291 421600

nj@nathanjamesestateagents.co.uk  
nathanjamesestateagents.com