



Castle Gardens, Caldicot

4 Bedrooms
3 Bathrooms
3 Receptions

£429,950



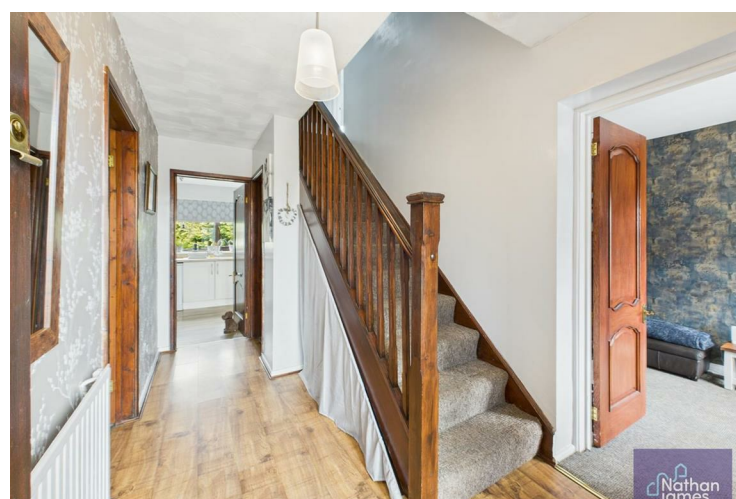
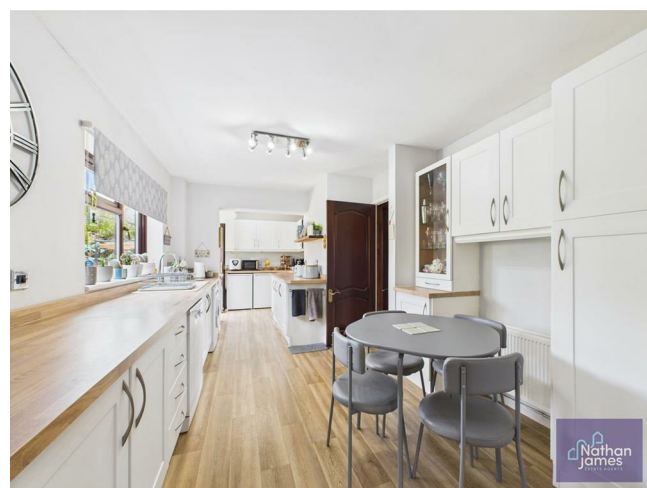
Situated in the charming area of Castle Gardens, Caldicot, this exquisite detached house offers a perfect blend of comfort and elegance. With three spacious reception rooms, this property is ideal for both entertaining guests and enjoying quiet family evenings. The well-designed layout ensures that each room flows seamlessly into the next, creating an inviting atmosphere throughout.

The house boasts four double bedrooms, two with an en-suite, providing ample space for relaxation and privacy. Each bedroom is thoughtfully designed to maximise natural light, creating a warm and welcoming environment. Additionally, the property features a modern family bathroom, ensuring convenience for both residents and visitors alike. There is driveway parking to the front. The rear gardens are well proportioned and private providing various seating areas.

The property is situated next to Cas Troggi park, a peaceful and pretty green space that provides walkways through to the Castle grounds and local church.

The location in Caldicot is particularly appealing, offering a peaceful residential setting while still being within easy reach of local amenities, schools, and transport links. This makes it an excellent choice for families or anyone seeking a tranquil lifestyle without sacrificing accessibility.

In summary, this detached house in Castle Gardens is a remarkable opportunity for those looking for a spacious and stylish home in a desirable area. With its ample reception space, comfortable bedrooms, and modern bathrooms, it is sure to meet the needs of a variety of buyers. Do not miss the chance to make this splendid property your own.



Living Room
12'3x17'9

Dining Room
9'11x11'0

Kitchen
9'1x21'10

Sunroom
7'4x9'8

Hallway
13x6'8

Sitting Room
16x7

Bedroom One
11'5x11'7

Bedroom Two
10'9x10'3

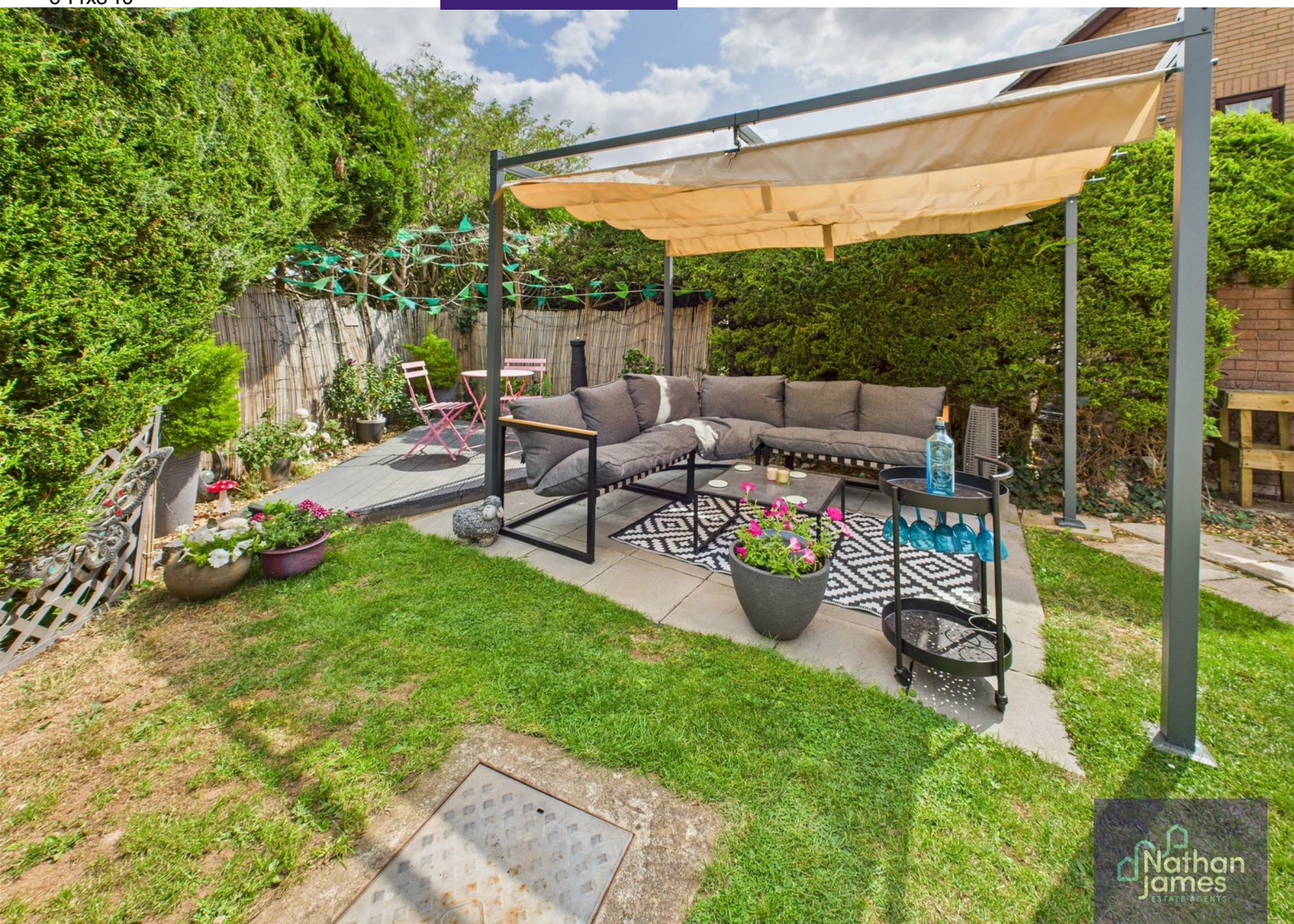
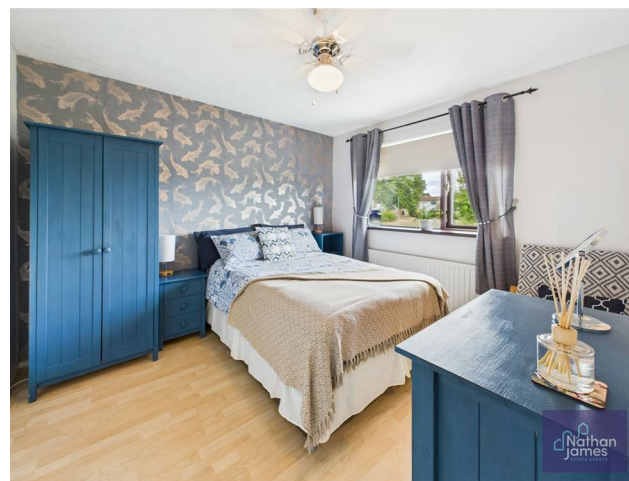
En suite
7'7x3'4

Bedroom Three
11'6x9'9

Bedroom Four
15'5x7'0

En Suite
6'5x6'11

Family Bathroom
6'11x8'10





Floor 0



Floor 1

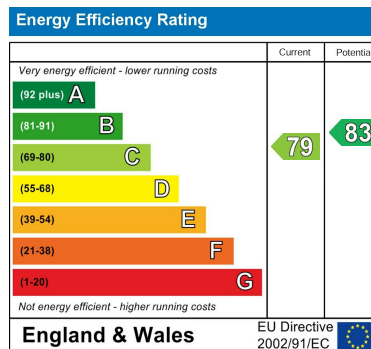


Approximate total area¹⁾
1482 ft²

(1) Excluding balconies and terraces

Calculations reference the RICS IPMS 3C standard. Measurements are approximate and not to scale. This floor plan is intended for illustration only.

GIRAFFE360



8 Newport Road
Caldicot
Monmouthshire
NP26 4HX
01291 421600

nj@nathanjamesestateagents.co.uk
nathanjamesestateagents.com