



Newport Road | | Caldicot | NP26 4AE

£224,950



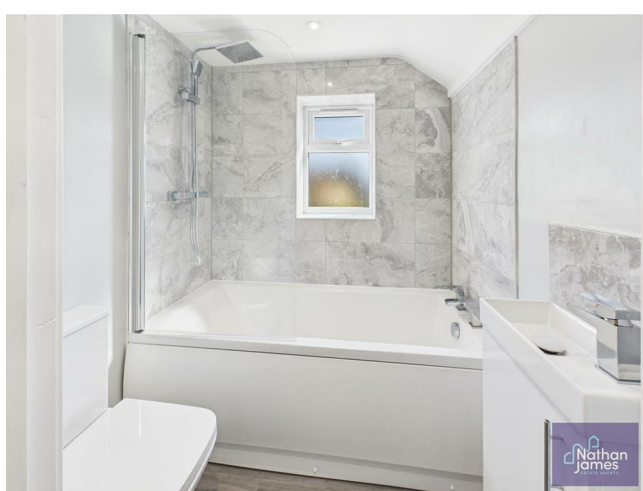
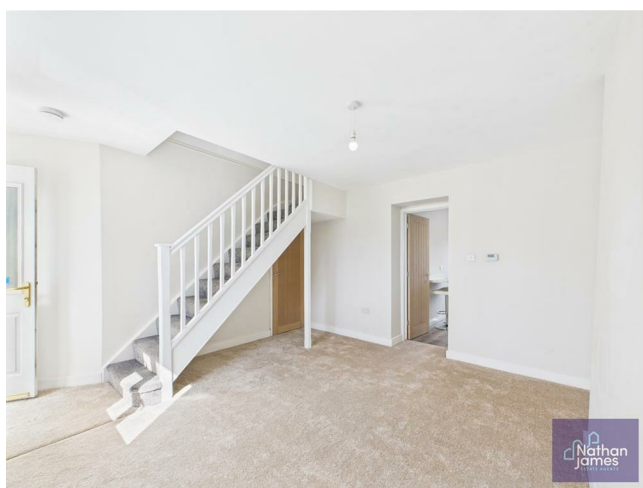
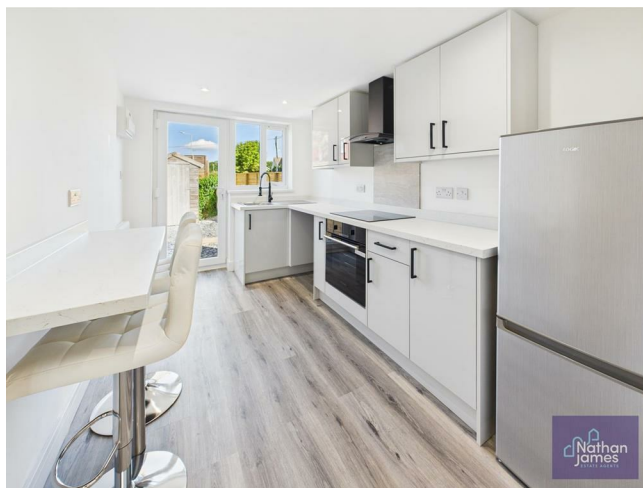


## COMPLETELY RENOVATED TO A HIGH STANDARD!

With No Onward Chain and located on Newport Road in the charming town of Caldicot, this delightful house presents an excellent opportunity for families and individuals alike. With three bedrooms, an inviting reception room and modern fitted kitchen this property serves as a perfect gathering space, ideal for entertaining guests or enjoying quiet evenings at home.

Caldicot is known for its friendly community and excellent local amenities, including shops, schools, and parks, all within easy reach. The property is also conveniently located for access to transport links, making it an ideal base for commuting to nearby cities.

This house on Newport Road is not just a place to live; it is a place to create lasting memories. Whether you are a first-time buyer or looking to settle down in a welcoming neighbourhood, this property is sure to meet your needs. Do not miss the chance to make this charming house your new home.





- No Chain
- Move in Ready
- Immaculately Presented
- Central location
- Completely renovated to a high standards
- Appliances including a Cooker & Fridge Freezer
- Amazing First Time Buyers or Investor opportunity
- Driveway





## Floor plans



### Floor 0



### Floor 1



Approximate total area<sup>(1)</sup>  
564 ft<sup>2</sup>

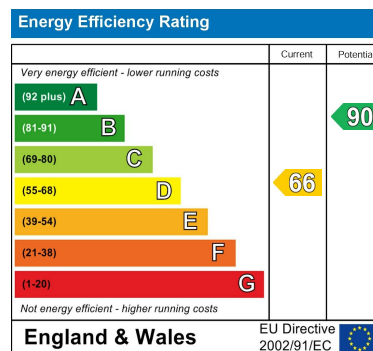
Reduced headroom  
14 ft<sup>2</sup>

(1) Excluding balconies and terraces

Reduced headroom  
..... Below 5 ft

Calculations reference the RICS IPMS 3C standard. Measurements are approximate and not to scale. This floor plan is intended for illustration only.

GIRAFFE360



8 Newport Road  
Caldicot  
Monmouthshire  
NP26 4HX

01291 421600

[nj@nathanjamesestateagents.co.uk](mailto:nj@nathanjamesestateagents.co.uk)

nathanjamesestateagents.com