



# Burns Crescent, Caldicot

4 Bedrooms  
1 Bathrooms  
1 Receptions

£240,000



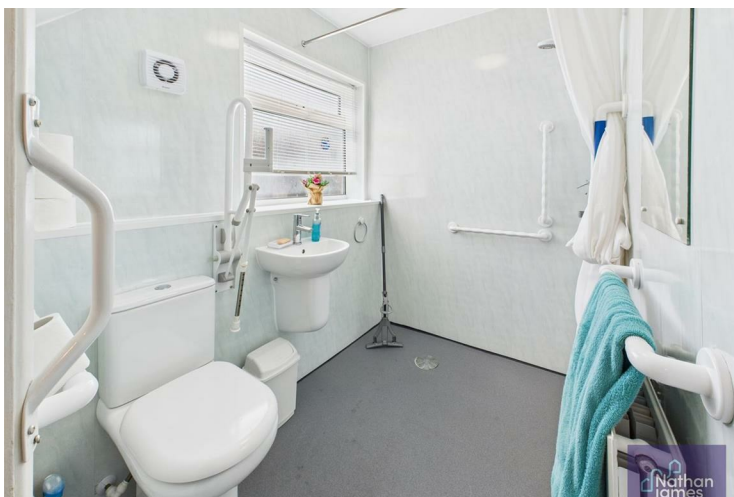


Situated in the quiet area of Burns Crescent, Caldicot and offered to the market with No Onward Chain. This well proportioned family home will require some modernisation and updating.

Entered via a useful porch, the hallway then leads to two reception rooms and the kitchen. The family wet room with mains fed shower is located on the ground floor. Upstairs there are four bedrooms and a w/c with sink. The property also benefits from a detached garage with workshop extension to the rear and driveway parking.

Caldicot is known for its friendly community and convenient amenities, making it a desirable location for those looking to settle down. With local shops, schools, and parks within easy reach, this property is perfectly positioned for a balanced lifestyle.

In summary, this house on Burns Crescent is a fantastic opportunity for anyone looking to make a home in a vibrant and welcoming area. With its generous living space and prime location, it is sure to attract interest from a variety of buyers. Don't miss the chance to view this lovely property and envision the possibilities it holds for you and your family.





Living Room  
11'6x11'6

Dining Room  
10'1x9'6

Kitchen  
9'0x9'4

Bedroom One  
10'1x12'3

Bathroom  
5'0x6'11

Hallway  
5'3x6'1

Bedroom Two  
10'4x10'8

Bedroom Three  
8'10x7'11

Bedroom Four  
5'11x9'6

W/C  
6'0x2'3





Floor 0 Building 1



Floor 1 Building 1



Floor 0 Building 2



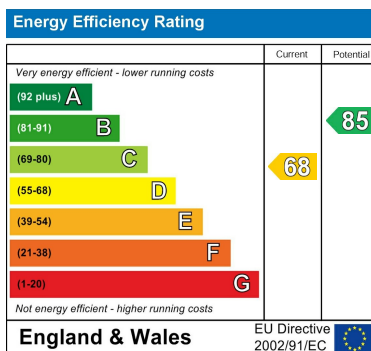
Approximate total area<sup>®</sup>  
1015 ft<sup>2</sup>

(1) Excluding balconies and terraces

While every attempt has been made to ensure accuracy, all measurements are approximate, not to scale. This floor plan is for illustrative purposes only.

Calculations are based on RICS IPMS 3C standard.

GIRAFFE360



8 Newport Road  
Caldicot  
Monmouthshire  
NP26 4HX  
01291 421600

nj@nathanjamesestateagents.co.uk  
nathanjamesestateagents.com