



Kensington Park, Magor

4 Bedrooms
2 Bathrooms
3 Receptions

£420,000

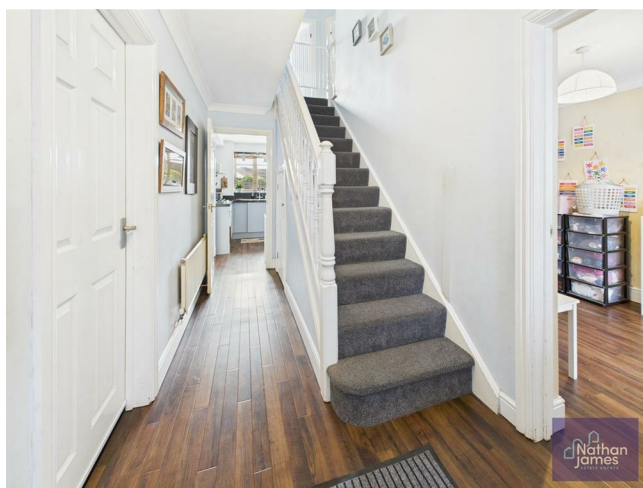
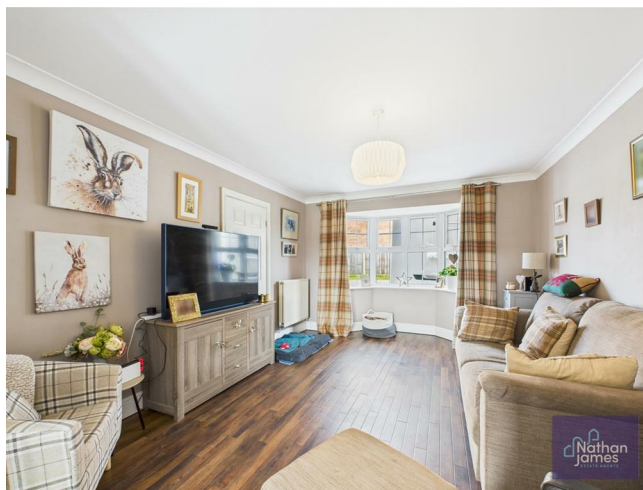


Located in the popular area of Kensington Park, Magor, Caldicot, this delightful house offers a perfect blend of modern living and comfort. With an impressive layout, the property boasts three spacious reception rooms, providing ample space for both relaxation and entertaining. The four well-appointed bedrooms ensure that there is plenty of room for family and guests alike, while the two contemporary bathrooms add a touch of luxury to daily routines.

The ground floor features stylish Karndean flooring, which not only enhances the aesthetic appeal but also offers durability and ease of maintenance. This home is designed with sustainability in mind, equipped with freehold solar panels that contribute to energy efficiency and lower utility bills. Additionally, the presence of an electric vehicle (EV) charger makes it an ideal choice for environmentally conscious buyers.

The Hive boiler system ensures that the home remains warm and inviting throughout the year, providing comfort and convenience at your fingertips. This property is not just a house; it is a sanctuary that combines modern amenities with a welcoming atmosphere.

With its prime location in Magor, residents can enjoy the tranquillity of suburban life while being within easy reach of local amenities and transport links. This home is a wonderful opportunity for those seeking a spacious and energy-efficient property in a desirable area. Do not miss the chance to make this exceptional house your new home.



Living Room
11'1x13'11

Dining Room
9'11x9'11

Kitchen
10'7x9'8

Utility
4'11x6'8

Cloakroom
4'9x2'10

Hallway
5'9x13'9

Second Reception
7'10x16'1

Bedroom One
11'1x12'8

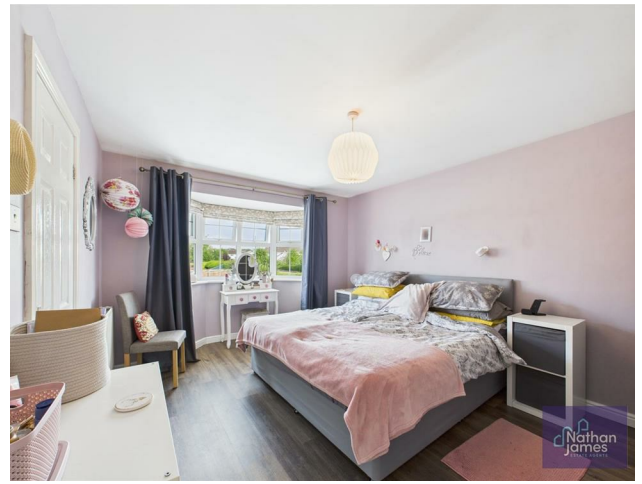
En Suite
4'1x9'10

Bedroom Two
11'1x11'3

Bedroom Three
8'6x12'9

Bedroom Four
8'1x11'3

Bathroom
6'8x5'6





Floor 0



Floor 1



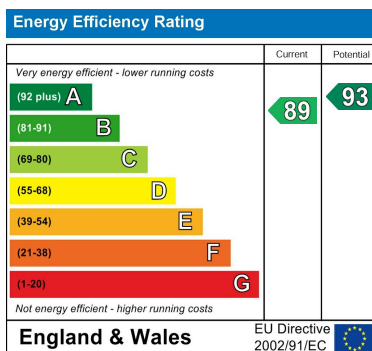
Approximate total area[®]
1237.21 ft²

(1) Excluding balconies and terraces

While every attempt has been made to ensure accuracy, all measurements are approximate, not to scale. This floor plan is for illustrative purposes only.

Calculations are based on RICS IPMS 3C standard.

GIRAFFE360



8 Newport Road
Caldicot
Monmouthshire
NP26 4HX
01291 421600

nj@nathanjamesestateagents.co.uk
nathanjamesestateagents.com