



Taff Road, Caldicot

3 Bedrooms
2 Bathrooms
3 Receptions

£389,950

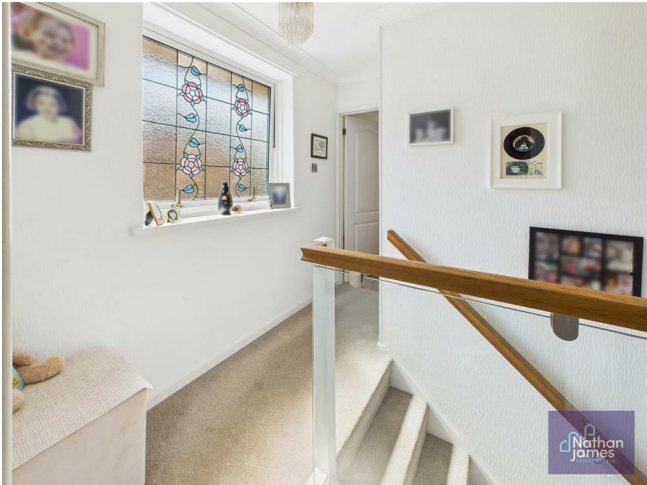


Located in the charming area of Taff Road, Caldicot, this delightful detached house offers a perfect blend of comfort and space, ideal for families or those seeking a serene retreat. With three well-proportioned reception rooms, this property provides ample room for relaxation and entertainment, making it an excellent choice for hosting gatherings or enjoying quiet evenings at home.

The house boasts three spacious bedrooms, each designed to offer a peaceful sanctuary for rest and rejuvenation. The two bathrooms ensure convenience for all residents, catering to the needs of a busy household.

Caldicot is known for its friendly community and convenient amenities, making it an attractive location for both families and professionals. The surrounding area offers a variety of local shops, schools, and parks, providing everything you need within easy reach.

This property presents a wonderful opportunity to create a warm and inviting home in a sought-after location. With its generous living space and desirable features, it is sure to appeal to those looking for a comfortable and stylish living environment. Do not miss the chance to make this charming house your new home.



Living Room
13'4x13'1

Dining Room
13'7x7'9

Sunroom
8'9x9'0

Kitchen
10'5x7'7

Utility
14'6x5'1

Ground Floor Shower room
8'2x2'11

Bedroom One
13'4x9'0

Bedroom Two
10'6x9'5

Bedroom Three
10'6x6'5

Bathroom
7'8x6'0

Landing
2'10x6'1





Floor 0



Floor 1



Approximate total area[®]

1180.48 ft²

Reduced headroom

8.97 ft²

(1) Excluding balconies and terraces

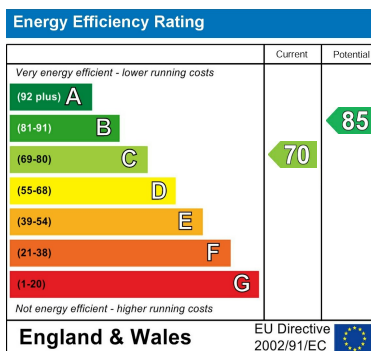
Reduced headroom

..... Below 5 ft

While every attempt has been made to ensure accuracy, all measurements are approximate, not to scale. This floor plan is for illustrative purposes only.

Calculations are based on RICS IPMS 3C standard.

GIRAFFE360



8 Newport Road
Caldicot
Monmouthshire
NP26 4HX
01291 421600

nj@nathanjamesestateagents.co.uk
nathanjamesestateagents.com