



Millfield Park, Caldicot

4 Bedrooms
2 Bathrooms
2 Receptions

£440,000



Perfectly positioned in Millfield Park, Undy is this immaculately presented four-bedroom home that offers a perfect blend of comfort and modern living. Spanning an impressive 1,643 square feet and has solar panels with storage batteries delivering significant economic benefits, this property is ideal for families seeking a spacious and inviting home.

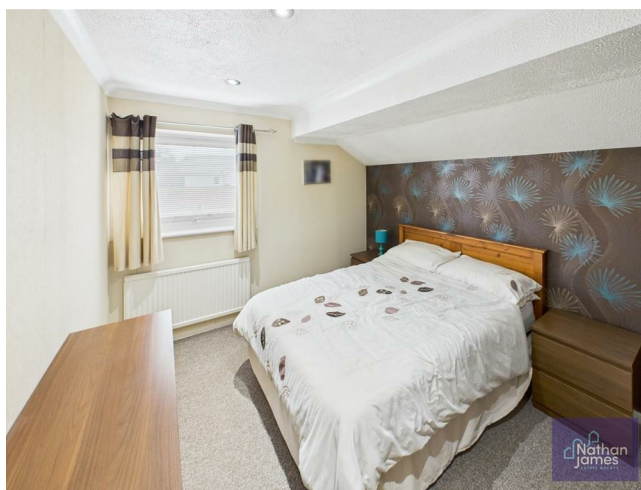
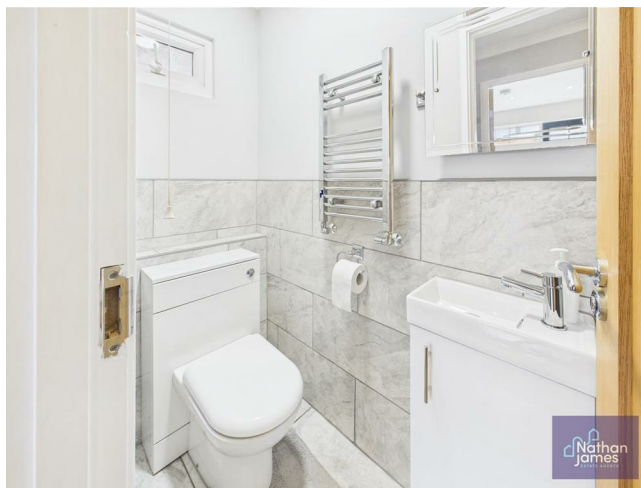
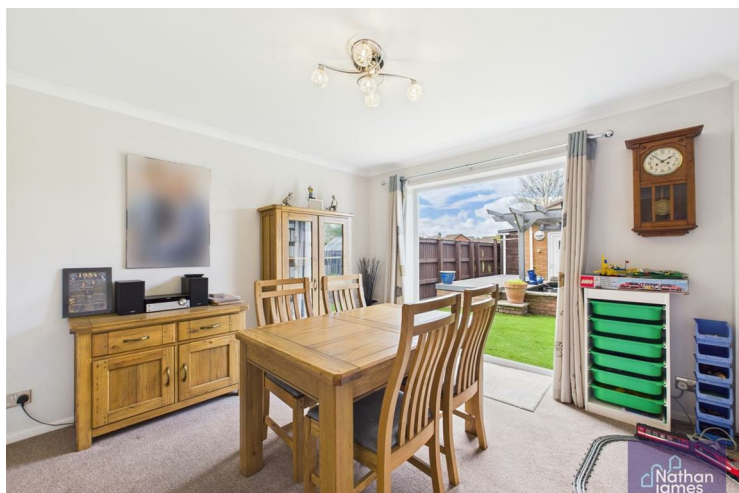
Upon entering, you will be greeted by two well-appointed reception rooms, providing ample space for relaxation and entertaining and a downstairs W/C. The modern kitchen is a highlight, featuring contemporary fittings that make cooking a delight.

Upstairs the four generously sized bedrooms offer plenty of room for rest and relaxation, and boasts a modern bathroom, ensuring convenience for all family members.

Outside, the property is equally impressive, with enclosed driveway available for multiple vehicles to park, making it perfect for families. Additionally, there is substantial outside storage, including a double garage and a sizable shed, providing ample space for tools, bikes, or garden equipment. The rear garden is the perfect escape for relaxing in the sunny garden and taking a breath.

This home is ready to move in, making it an excellent choice for those looking to settle down in a peaceful yet convenient location with its modern amenities and charming surroundings, this property is a must-see for anyone seeking a delightful family home.

Its prime village location allows for easy access to local shops and Magor Square, all within a pleasant walking distance.



Lounge
17'8 x 13'2

Kitchen
9'8 x 11'8

Dining Room

W/C
5'5 x 2'10

Bedroom 1
11'4 x 11'9

Bedroom 2
9'11 x 11'9

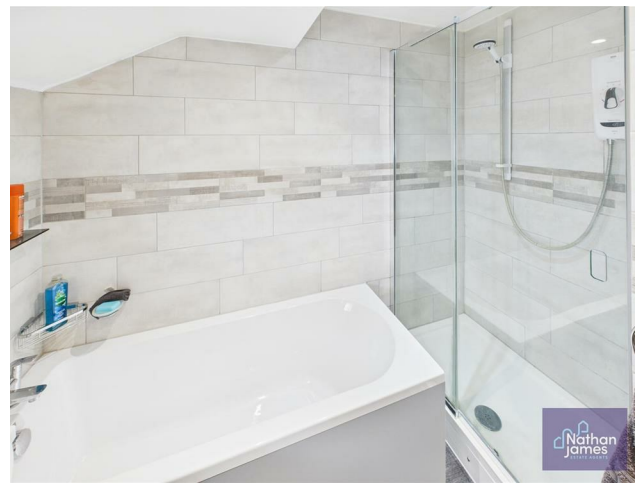
Bedroom 3
9'9 x 9'9

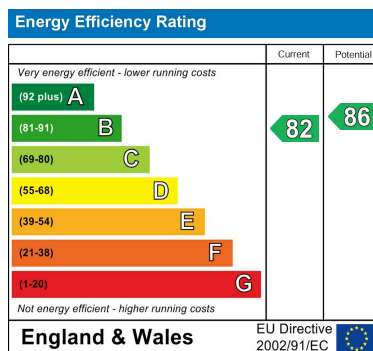
Bedroom 4
7'1 x 8'6

Bathroom
8'6 x 7'1

Garage
17'3 x 17'5

Shed
19'6 x 11'10





8 Newport Road
Caldicot
Monmouthshire
NP26 4HX
01291 421600

nj@nathanjamesestateagents.co.uk
nathanjamesestateagents.com