



## Clos Rheidol, Caldicot

4 Bedrooms  
2 Bathrooms  
4 Receptions

£450,000





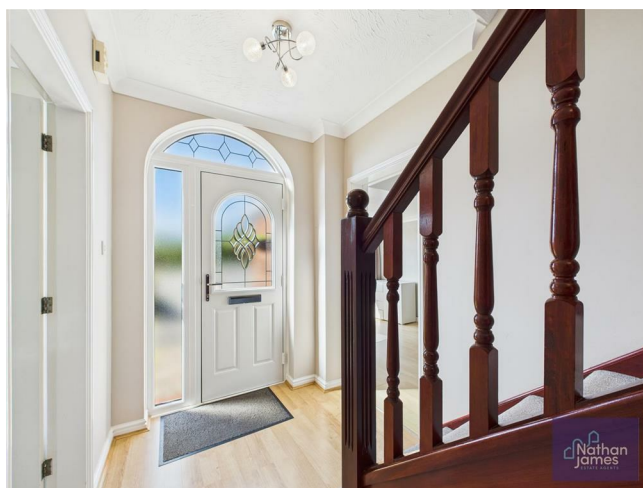
Located in a quiet cul de sac in the charming area of Clos Rheidol, Caldicot, this splendid detached house offers a perfect blend of modern living and spacious comfort. Built after the year 2000, the property boasts a contemporary design that caters to the needs of today's families.

Upon entering, you are greeted by an inviting atmosphere, enhanced by four generous reception rooms. These versatile spaces can be tailored to suit your lifestyle, whether you envision a formal dining area, a cosy lounge, or a vibrant playroom for the children. The family kitchen benefits from a separate utility room which leads to generous additional integral storage next door. The layout is designed to promote both relaxation and entertainment, making it ideal for hosting gatherings with family and friends.

The house features four well-proportioned bedrooms, providing ample space for rest and privacy. Each room is designed to be a tranquil retreat, ensuring a peaceful night's sleep. Additionally, the property includes a modern en-suite, family bathroom and ground floor cloakroom which offer convenience and comfort for the entire household.

The location in Caldicot is particularly appealing, with a friendly community atmosphere and easy access to local amenities. Residents can enjoy nearby parks, shops, and schools, making it an excellent choice for families.

In summary, this detached house in Clos Rheidol is a remarkable opportunity for those seeking a spacious and modern home in a desirable area. With its four reception rooms, four bedrooms, and pretty gardens, it is well-equipped to meet the demands of contemporary living. Do not miss the chance to make this delightful property your own.





Office/ Snug  
13'3x8'3

Kitchen  
9'6x15'4

Hallway  
14'9x5'11

W/C  
3'7x5'6

Living Room  
16'4x10'11

Dining Room  
9'5x10'5

Conservatory  
12'5x15'6

Bedroom One  
14'7x10'10

en-suite  
4'3x6'4

Bedroom Two  
14'2x8'7

Bedroom Three  
14'2x8'7

Bedroom Four  
9'8x10'5

Bathroom  
6'4x6'6





Floor 0



Floor 1



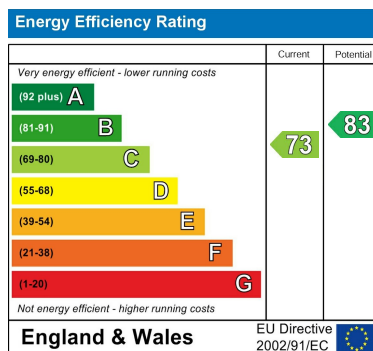
Approximate total area<sup>®</sup>  
1493.48 ft<sup>2</sup>

(1) Excluding balconies and terraces

While every attempt has been made to ensure accuracy, all measurements are approximate, not to scale. This floor plan is for illustrative purposes only.

Calculations are based on RICS IPMS 3C standard.

GIRAFFE360



8 Newport Road  
Caldicot  
Monmouthshire  
NP26 4HX  
01291 421600

nj@nathanjamesestateagents.co.uk  
nathanjamesestateagents.com