



Caemawr Grove, Caldicot

3 Bedrooms
1 Bathrooms
2 Receptions

£269,950



This delightful semi-detached house in Caemawr Grove, Caldicot, is well presented and is located in a quiet residential area close to local amenities.

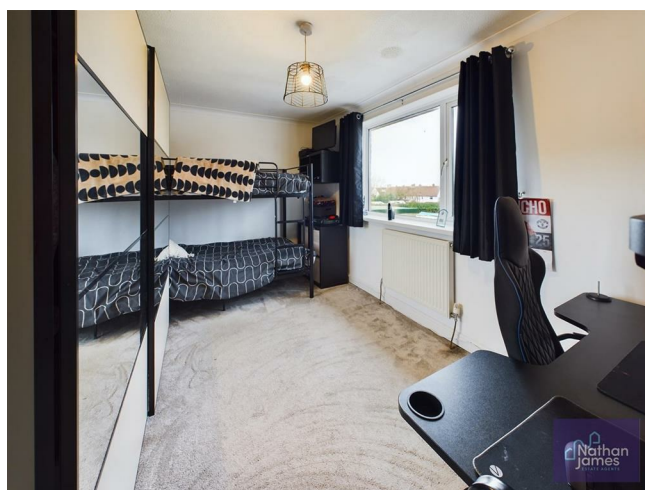
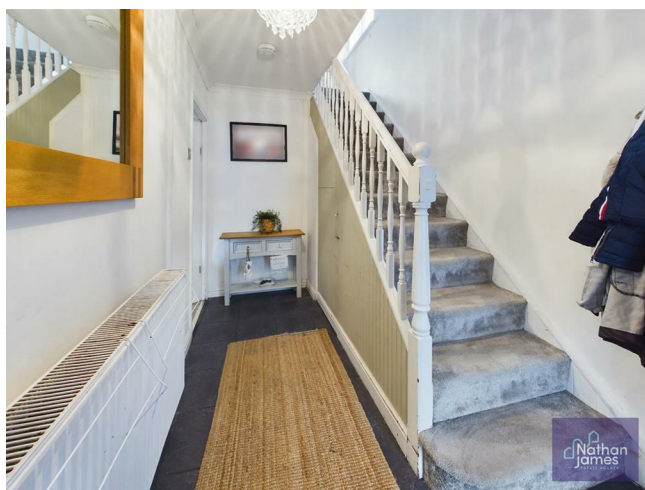
Upon entering, you are greeted by a spacious reception room, perfect for both relaxation and entertaining. The kitchen diner to the rear of the property makes the most of the space, offering a functional social area overlooking the rear garden. The natural light that floods through the windows creates a warm and welcoming atmosphere throughout the home.

The property boasts three well-proportioned bedrooms, providing ample space for family members or guests. Each room offers a peaceful retreat, ideal for restful nights and rejuvenating mornings. The layout is thoughtfully designed to ensure comfort and privacy for all.

Completing this charming home is a well-appointed bathroom, designed for both functionality and style. It serves as a convenient space for daily routines, ensuring that all your needs are met.

Situated in the desirable location of Caldicot, this property benefits from a friendly community and easy access to local amenities, schools, and transport links. Whether you are looking to settle down or invest, this semi-detached house offers a wonderful blend of comfort and convenience.

In summary, Caemawr Grove is a fantastic opportunity for those seeking a lovely home in a popular area. With its generous living spaces, three bedrooms, and a prime location, this property is not to be missed. We invite you to come and experience the charm of this delightful home for yourself.



Kitchen
20'8x8'9

Living Room
11'7x13'9

Hallway
11'7x6'6

Bedroom One
11'9x10'6

Bedroom Two
8'9x12'10

Bedroom Three
8'8x9'9

Bathroom
5'8x7'0

Landing
5'8x7'2





Floor 0

Approximate total area⁽¹⁾
817.95 ft²

(1) Excluding balconies and terraces

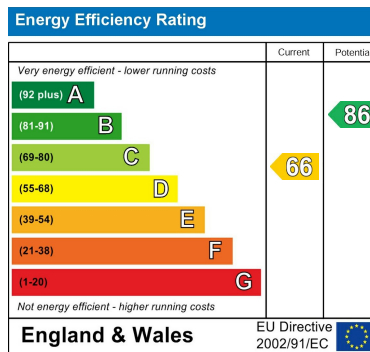
While every attempt has been made to ensure accuracy, all measurements are approximate, not to scale. This floor plan is for illustrative purposes only.

Calculations were based on RICS IPMS 3C standard. Please note that calculations were adjusted by a third party and therefore may not comply with RICS IPMS 3C.

GIRAFFE360



Floor 1



8 Newport Road
Caldicot
Monmouthshire
NP26 4HX
01291 421600

nj@nathanjamesestateagents.co.uk
nathanjamesestateagents.com