



Moorlands View, Caldicot

3 Bedrooms
1 Bathrooms
1 Receptions

£225,000



IDEAL INVESTMENT or STARTER HOME
with NO CHAIN!

If you are looking for an investment property or you are a First Time Buyer then this is the property for you! positioned in a fantastic area, close to Caldicot town centre and all the amenities this area has to offer. This Three bedroom family home consists of a Lounge, Kitchen/ Diner, Two storage cupboards and a Cloakroom to the Ground Floor whilst to the First Floor there are Three Bedrooms and a Family Bathroom. The property boasted from a enclosed rear garden with outside storage and double Driveway! So call Nathan James to view today!



Lounge
12.7m x 11.3m

Kitchen / Diner
8.4m x 21.6

W/C
3.8m x 6.6m

Bedroom 1
10.10 x 11.6m

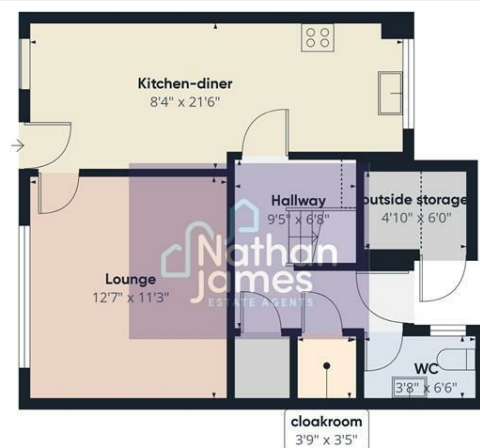
Bedroom 2
10.6m x 11.6

Bedroom 3
7.4m x 9.9m

Bathroom
7.6m x 6.8m

Storage cupboard (outside)
4.10m x 6.0m





Floor 0



Floor 1



Approximate total area[®]

881.88 ft²

Reduced headroom

16.77 ft²

(1) Excluding balconies and terraces

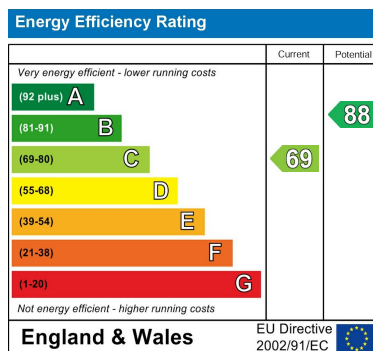
Reduced headroom

..... Below 5 ft

While every attempt has been made to ensure accuracy, all measurements are approximate, not to scale. This floor plan is for illustrative purposes only.

Calculations are based on RICS IPMS 3C standard.

GIRAFFE360



8 Newport Road

Caldicot

Monmouthshire

NP26 4HX

01291 421600

nj@nathanjamesestateagents.co.uk

nathanjamesestateagents.com