



Rockfield Way | Undy | Caldicot | NP26 3FD

Offers Over £435,000



Rockfield Way | Undy

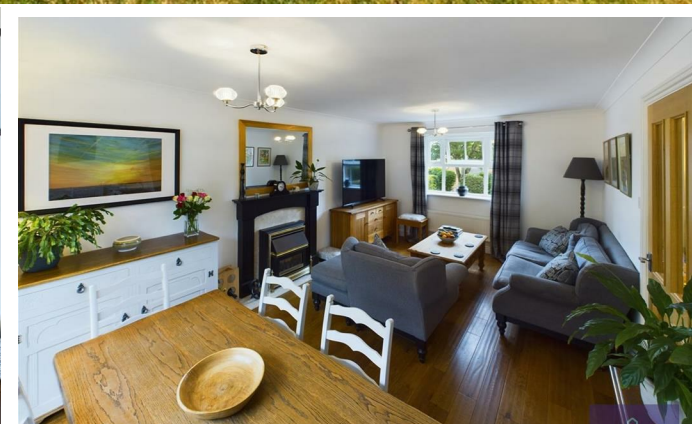
Caldicot | NP26 3FD

Offers Over £435,000

NO CHAIN! Nathan James are thrilled to introduce this beautifully presented family home located in Undy village. This spacious four-bedroom detached house sits on a larger-than-average plot, with private gardens. Having previously served as the show home.

Upon entering through the stylish central reception hall, you are greeted with a bright and inviting space. Granite tiles flow seamlessly from the entrance through to the kitchen. The front of the house features a cosy family room, easily adaptable to fit your needs as an office, playroom, or snug. The living areas are adorned with oak flooring throughout. Continuing, past the ground floor cloakroom, leads through to the well-equipped kitchen overlooking the private gardens.

The chic kitchen boasts ample space for a range cooker, with fully integrated appliances, abundant wall and floor units, and a sleek extractor hood. Moving on to a further generously sized reception room, ideal for dining and relaxation, patio doors open out to a paved area. High quality internal oak doors are fitted throughout the property. Upstairs, you'll find four bedrooms all with newly fitted carpets and a family bathroom. The master bedroom is bright with fitted storage and an ensuite shower room featuring modern fixtures. The remaining three bedrooms are all beautifully decorated, with the second bedroom being a double with fitted storage, the third also a double, and the fourth a spacious single or potential office. The family bathroom includes a bath with an electric shower overhead and stylish subway wall tiles. The double garage has been cleverly converted into extra living space, currently used as a games room but versatile enough to become a home gym, workshop, or a teenager's social space. The well-maintained gardens surrounding the property offer a sense of space and privacy, with plum and apple trees among the variety of shrubs. The enclosed rear garden features a spacious patio with water feature and a charming lawn area.





Entrance Hall

8'5" x 13'9" (2.57 x 4.19)

Living/Dining Room

11'2" x 17'10" (3.40 x 5.44)

Living/Dining Room.

11'2" x 17'10" (3.40 x 5.44)

Lounge

9'3" x 11'0" (2.82 x 3.35)

Cloakroom

7'7" x 3'1" (2.31 x 0.94)

Kitchen

16'6" x 9'1" (5.03 x 2.77)

Kitchen.

16'6" x 9'1" (5.03 x 2.77)

Bedroom One

10'1" x 10'5" (3.07 x 3.17 (3.18))

En Suite

4'6" x 6'6" (1.37 x 1.98)

Bedroom Two

9'8" x 9'4" (2.95 x 2.84)

Bedroom Three

11'6" x 8'3" (3.51 x 2.51)

Bedroom Four

6'5" x 9'4" (1.96 x 2.84)

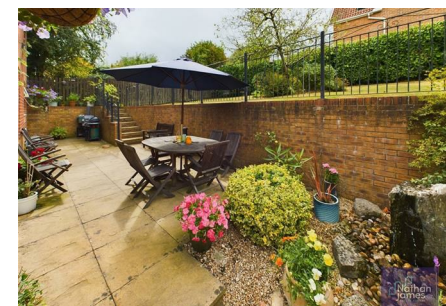
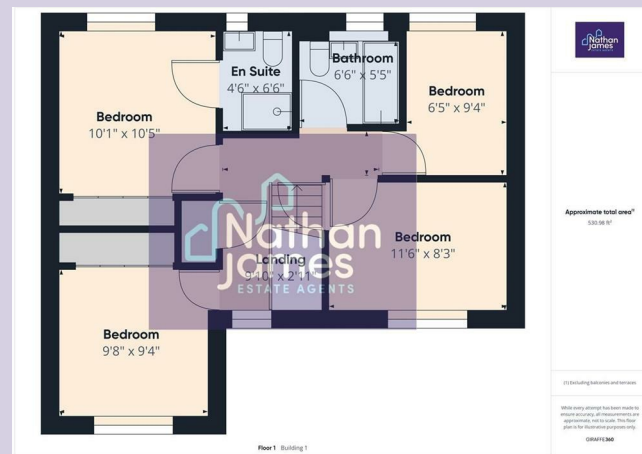
Bathroom

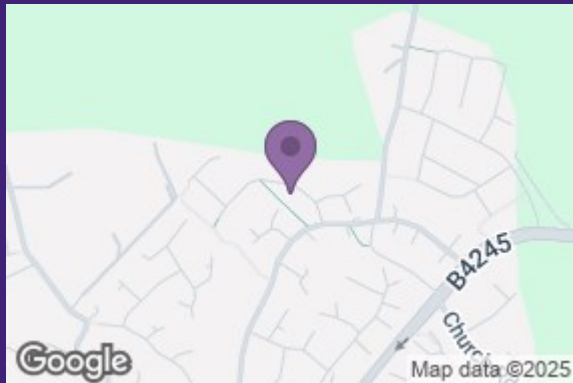
6'6" x 5'5" (1.98 x 1.65)

Games Room

16'3" x 16'0" (4.95 x 4.88)







Floor 0 Building 1



Floor 1 Building 1



Floor 0 Building 2



Approximate total area⁽¹⁾
1358.19 ft²

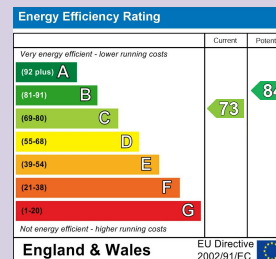
Reduced headroom
10.87 ft²

(1) Excluding balconies and terraces

☐ Reduced headroom
(below 1.5m/4.92ft)

While every attempt has been made to ensure accuracy, all measurements are approximate, not to scale. This floor plan is for illustrative purposes only.

GIRAFFE360



8 Newport Road
Caldicot
Monmouthshire
NP26 4HX
01291 421600
nj@nathanjamesestateagents.co.uk
nathanjamesestateagents.com