

LORDE COURT, SHAKESPEARE ROAD, HANWELL

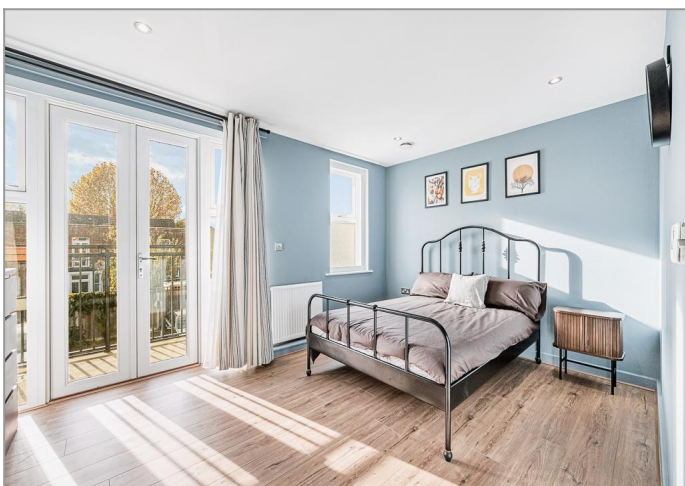
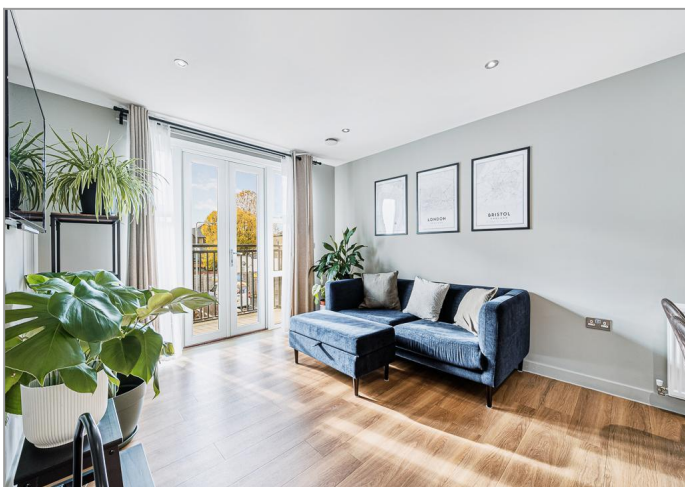


£2,100 PER MONTH

Located in the heart of Hanwell, a beautifully-presented modern apartment is set on the first-floor of this sought-after Poets Corner development and offers contemporary living just minutes from the Elizabeth line as well as other local amenities right on your doorstep. Key features include the bright and spacious open-plan living/kitchen/dining areas, a fully fitted kitchen with integrated appliances and direct access to its own private balcony. Other benefits include two well-proportioned bedrooms, a sleek three-piece bathroom suite with shower over bath, secure entry system, gated allocated off street parking (with EV charging point) below and would be ideal for young professionals or couples seeking a stylish, low-maintenance home in a convenient West London location.

TUFFIN & WREN

Independent Estate Agents



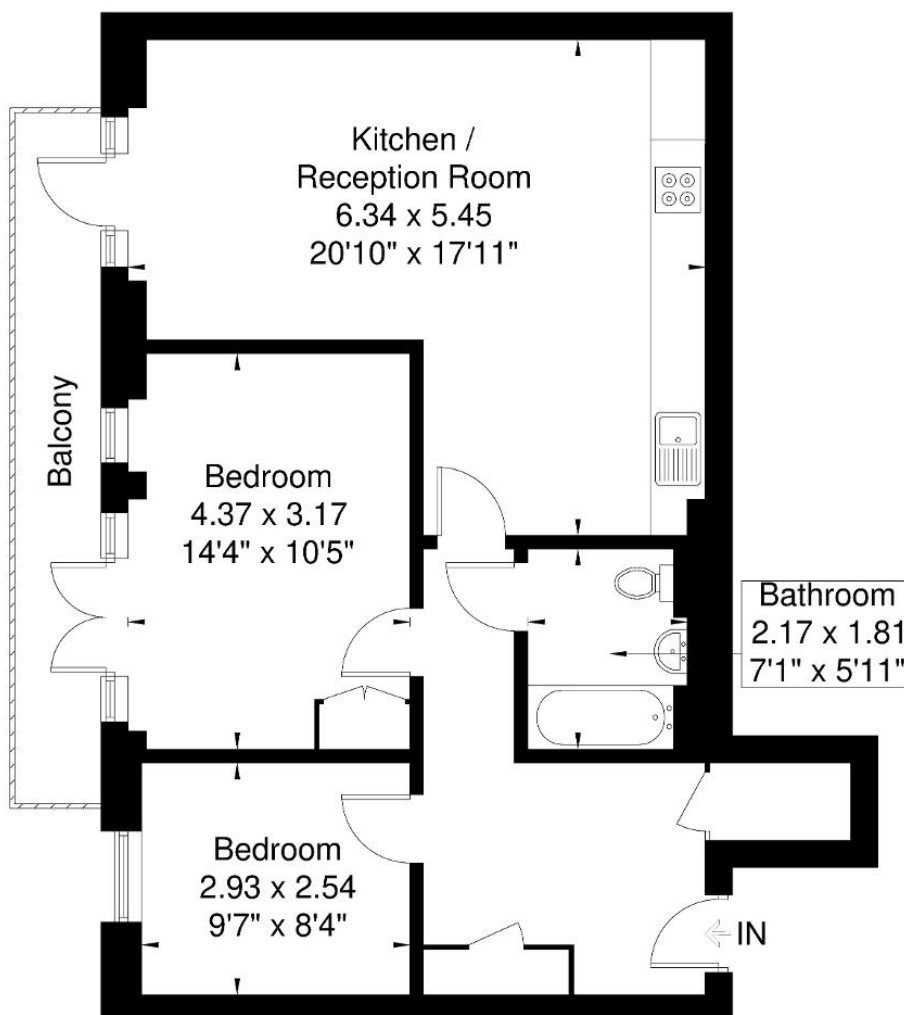
Further Information

For more details please call us on **020 8840 0993** or send an email to rent@tuffin-wren.co.uk.

Please note it is not our company policy to test services, heating systems and domestic appliances, therefore we cannot verify that they are in working order. Prospective purchasers are advised to obtain verification from their solicitors and/or surveyors.

Lorde Court

Approximate Gross Internal Area = 68.6 sq m / 738 sq ft



First Floor

Although every attempt has been made to ensure accuracy, all measurements are approximate.

The floorplan is for illustrative purposes only and not to scale.

© www.perspective.co.uk

Score	Energy rating	Current	Potential
92+	A		
81-91	B	85 B	85 B
69-80	C		
55-68	D		
39-54	E		
21-38	F		
1-20	G		