



£525,000

Greenford Avenue, Hanwell, W7



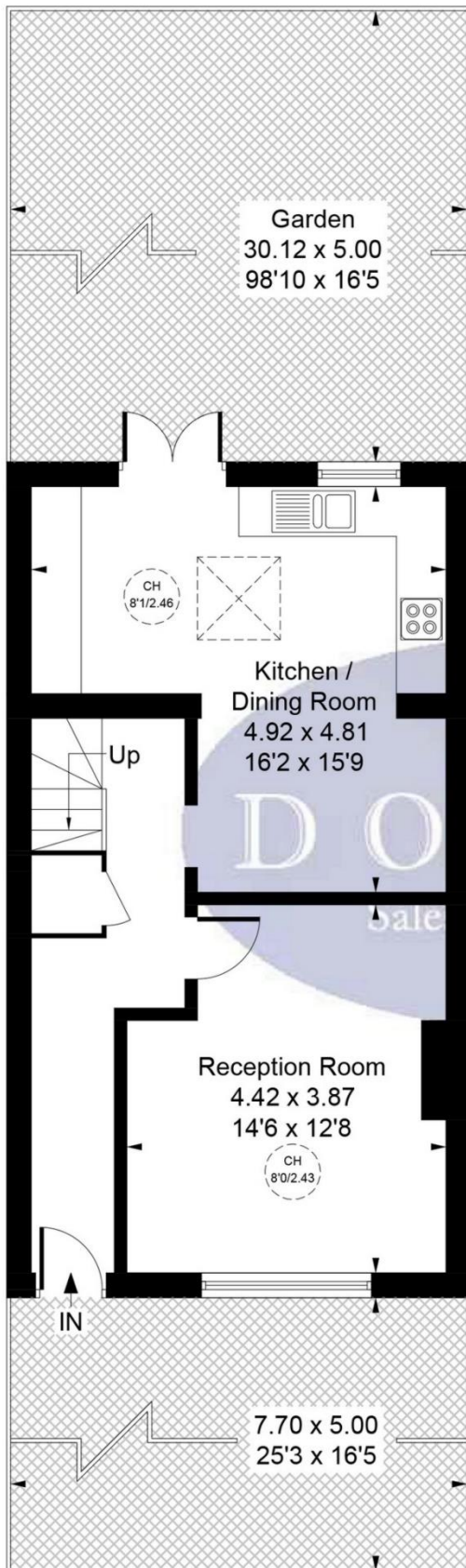
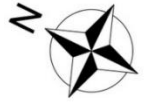
- 2 Double Bedroom House
- Off Street Parking
- Almost 100 Ft Garden
- Close To Elizabeth Line
- 877 Sq Ft
- Chain Free

A well presented, chain free, extended, 2 double bedroom, freehold house, with off street parking and almost 100 ft rear garden close to great schools and transport links. The accommodation comprises spacious lounge and extended kitchen / diner. Upstairs, there are 2 double bedrooms and shower room. This property benefits from a large loft space, almost 100 ft rear garden, valuable off street parking and chain free. Perfectly located for Hanwell (Elizabeth line) and Castle Bar Park (National Rail) stations, bus routes, road networks, good schools, parks and local shops.

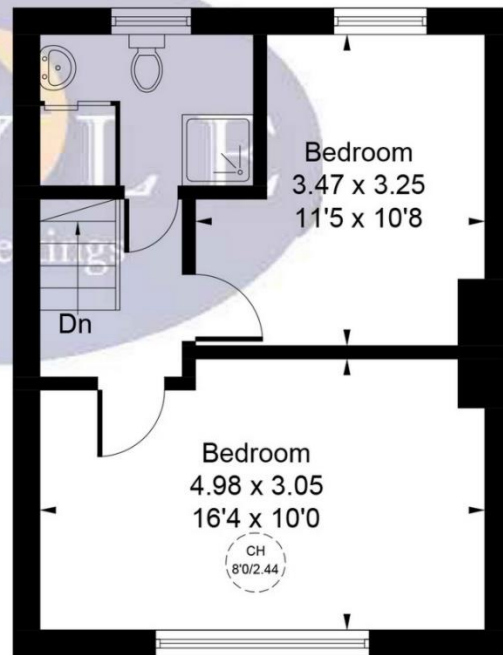


Greenford Avenue, London, W7 1AD

Approximate Gross Internal Area
81.43 sq m / 877 sq ft



CH = Ceiling Height



First Floor
33.50 sq m / 361 sq ft

Ground Floor
47.93 sq m / 516 sq ft

Whilst every attempt has been made to ensure the accuracy of the floor plan contained here, measurements of doors, windows, rooms and any other items are approximate and no responsibility is taken for any error, omission, or mis-statement.

This plan is for illustrative purposes only and should be used as such by any prospective purchaser.

© Vizion Property Marketing Produced for Doyle Sales & Lettings

Map



VIEWING BY APPOINTMENT WITH AGENTS DOYLE SALES & LETTINGS

11 Broadway Buildings, Boston Rd, Hanwell, London, W7 3TT T: 020 8840 0171 E: info@doylesalesandlettings.co.uk W: www.doylesalesandlettings.co.uk

General: While we endeavour to make our sales particulars fair, accurate and reliable, they are only a general guide to the property and, accordingly, if there is any point which is of particular importance to you, please contact the office and we will be pleased to check the position for you, especially if you are contemplating travelling some distance to view the property.

Measurements: These approximate room sizes are only intended as general guidance. You must verify the dimensions carefully before ordering carpets or any built-in furniture.

Services: Please note we have not tested the services or any of the equipment or appliances in this property, accordingly we strongly advise prospective buyers to commission their own survey or service reports before finalizing their offer to purchase.

THESE PARTICULARS ARE ISSUED IN GOOD FAITH BUT DO NOT CONSTITUTE REPRESENTATIONS OF FACT OR FORM PART OF ANY OFFER OR CONTRACT. THE MATTERS REFERRED TO IN THESE PARTICULARS SHOULD BE INDEPENDENTLY VERIFIED BY PROSPECTIVE BUYERS OR TENANTS. NEITHER DOYLE SALES & LETTINGS NOR ANY OF ITS EMPLOYEES OR AGENTS HAS ANY AUTHORITY TO MAKE OR GIVE ANY REPRESENTATION OR WARRANTY WHATEVER IN RELATION TO THIS PROPERTY.

YOUR HOME IS AT RISK IF YOU DO NOT KEEP UP REPAYMENTS ON A MORTGAGE OR OTHER LOAN SECURED ON IT.

Written quotations available on request. All loans secured on property. Life assurance is usually required.

EPC Rating C

