



£650,000

Bishops Road, Hanwell, W7



- 2 Double Bedrooms
- Over 1000 Sq Ft
- Office / Loft Room
- Stunning Condition
- Excellent School Catchment
- Popular Olde Hanwell

A beautifully presented, two double bedroom, Victorian family home with loft room / office located in the very popular area of Olde Hanwell. The ground floor accommodation comprises of reception room, rear dining room and separate kitchen. On the first floor there are two double bedrooms and stunning family bathroom. The property benefits from front and rear gardens, the latter is low maintenance with a useful shed and the loft, which is accessed by a stairs from the second bedroom, is currently used as an office and boasts eaves storage. Bishops Road is situated a short stroll away from the Grand Union Canal and the popular Fox Public House. The property falls into great school catchment areas such as St Marks, St Josephs and Elthorne Park High schools and with easy access to Hanwell (Elizabeth line) and Boston Manor (Piccadilly line) stations, good bus routes, road networks, parks and the good shopping facilities that Hanwell offers.

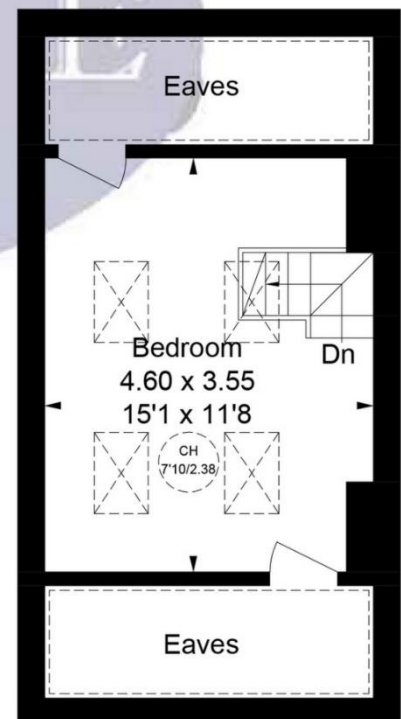
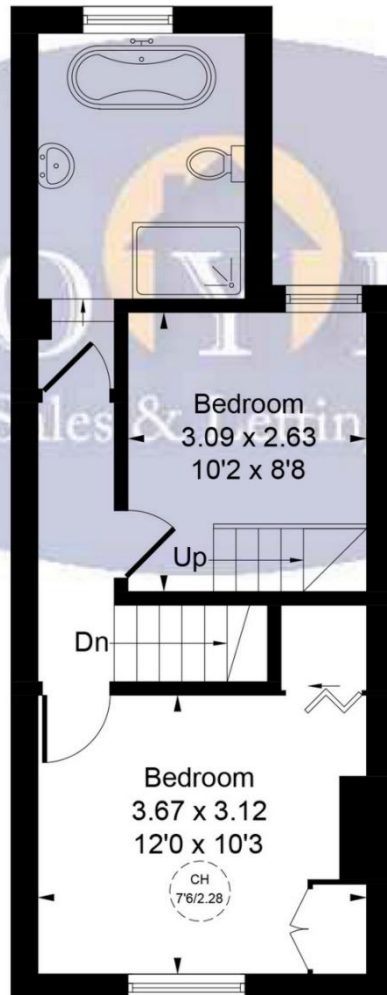
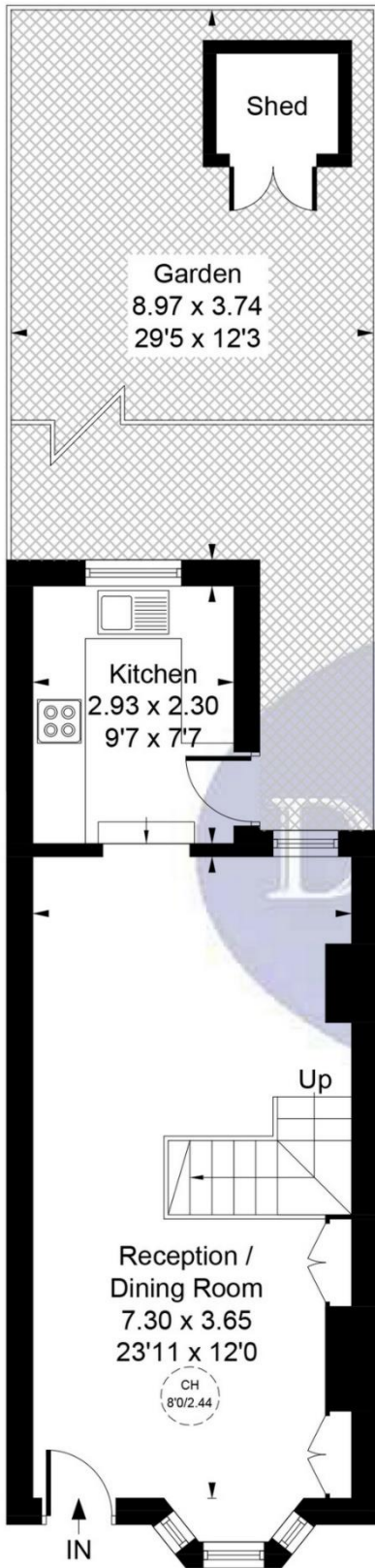


Bishops Road, London, W7 2NY

Approximate Gross Internal Area (Excluding Shed) = 85.63 sq m / 922 sq ft

Reduced Headroom & Eaves = 10.03 sq m / 108 sq ft

Total = 95.66 sq m / 1030 sq ft



Second Floor
16.79 sq m / 181 sq ft
Reduced Headroom & Eaves
10.03 sq m / 108 sq ft

Whilst every attempt has been made to ensure the accuracy of the floor plan contained here, measurements of doors, windows, rooms and any other items are approximate and no responsibility is taken for any error, omission, or mis-statement. This plan is for illustrative purposes only and should be used as such by any prospective purchaser.

Map



VIEWING BY APPOINTMENT WITH AGENTS DOYLE SALES & LETTINGS

11 Broadway Buildings, Boston Rd, Hanwell, London, W7 3TT T: 020 8840 0171 E: info@doylesalesandlettings.co.uk W: www.doylesalesandlettings.co.uk

General: While we endeavour to make our sales particulars fair, accurate and reliable, they are only a general guide to the property and, accordingly, if there is any point which is of particular importance to you, please contact the office and we will be pleased to check the position for you, especially if you are contemplating travelling some distance to view the property.

Measurements: These approximate room sizes are only intended as general guidance. You must verify the dimensions carefully before ordering carpets or any built-in furniture.

Services: Please note we have not tested the services or any of the equipment or appliances in this property, accordingly we strongly advise prospective buyers to commission their own survey or service reports before finalizing their offer to purchase.

THESE PARTICULARS ARE ISSUED IN GOOD FAITH BUT DO NOT CONSTITUTE REPRESENTATIONS OF FACT OR FORM PART OF ANY OFFER OR CONTRACT. THE MATTERS REFERRED TO IN THESE PARTICULARS SHOULD BE INDEPENDENTLY VERIFIED BY PROSPECTIVE BUYERS OR TENANTS. NEITHER DOYLE SALES & LETTINGS NOR ANY OF ITS EMPLOYEES OR AGENTS HAS ANY AUTHORITY TO MAKE OR GIVE ANY REPRESENTATION OR WARRANTY WHATEVER IN RELATION TO THIS PROPERTY.

YOUR HOME IS AT RISK IF YOU DO NOT KEEP UP REPAYMENTS ON A MORTGAGE OR OTHER LOAN SECURED ON IT.

Written quotations available on request. All loans secured on property. Life assurance is usually required.

EPC Rating C

