



£425,000

Tennyson Road, Hanwell, W7



- 2 Double Bedrooms
- Private Garden
- Own Entrance
- Garage & Loft Space
- Close To Elizabeth Line
- Chain Free

A chain free and recently refurbished, 2 double bedroom, first floor maisonette, with garage, moments from the Elizabeth line. The accommodation which offers good natural light comprises own entrance, stairs to first floor, spacious reception room, separate kitchen with underfloor heating, 2 double bedrooms and stylish family bathroom with underfloor heating. Further benefits include access to large loft space which is boarded and insulated with light and pull down ladder, own rear private garden and an enviable garage. Tennyson Road is perfectly located a few minutes walk to Hanwell station (Elizabeth line) and close to Boston Manor station (Piccadilly line), great schools, parks, bus routes, road networks and shops.

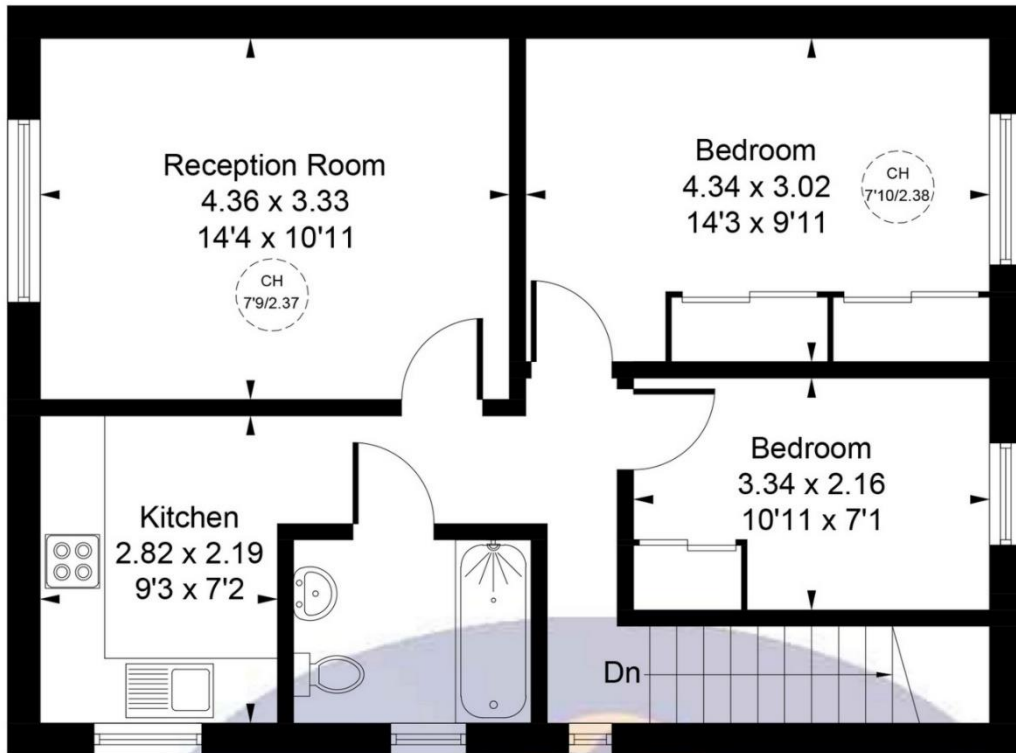
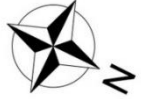


Tennyson Road, London, W7 1LH

Approximate Gross Internal Area = 58.86 sq m / 634 sq ft

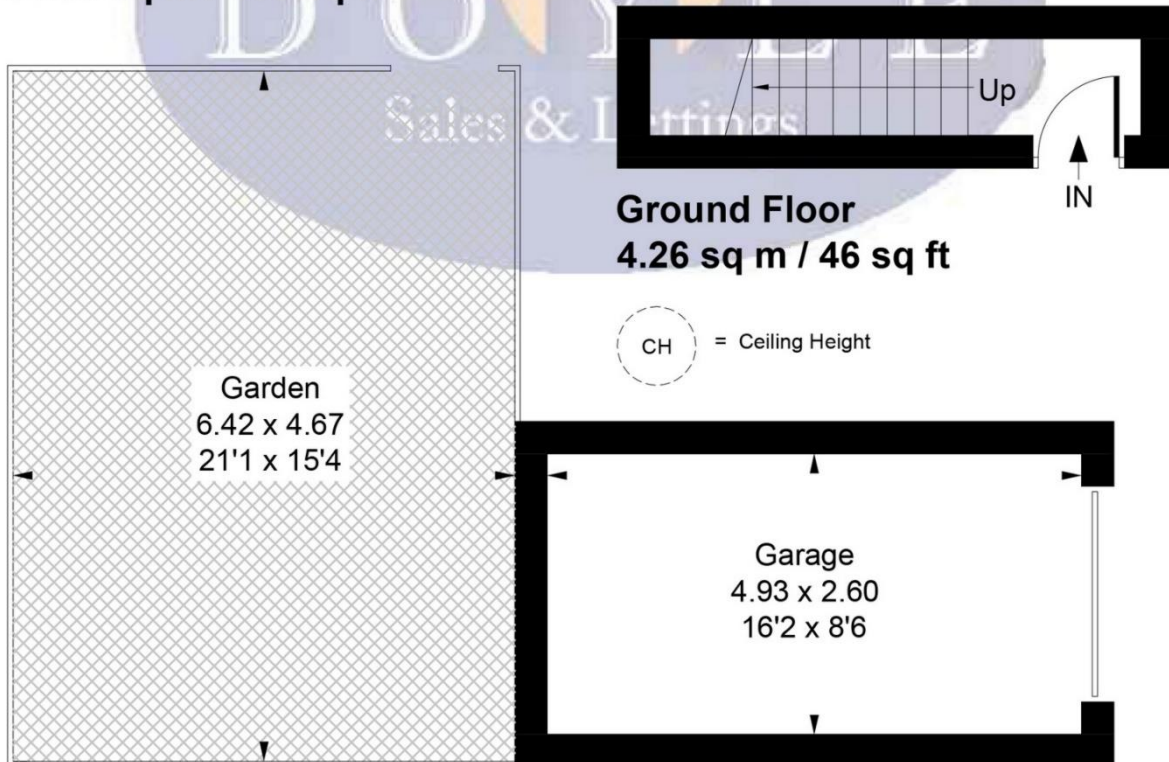
Garage = 13.07 sq m / 141 sq ft

Total = 71.93 sq m / 775 sq ft



First Floor

54.60 sq m / 588 sq ft



(Not Shown In Actual Location / Orientation)

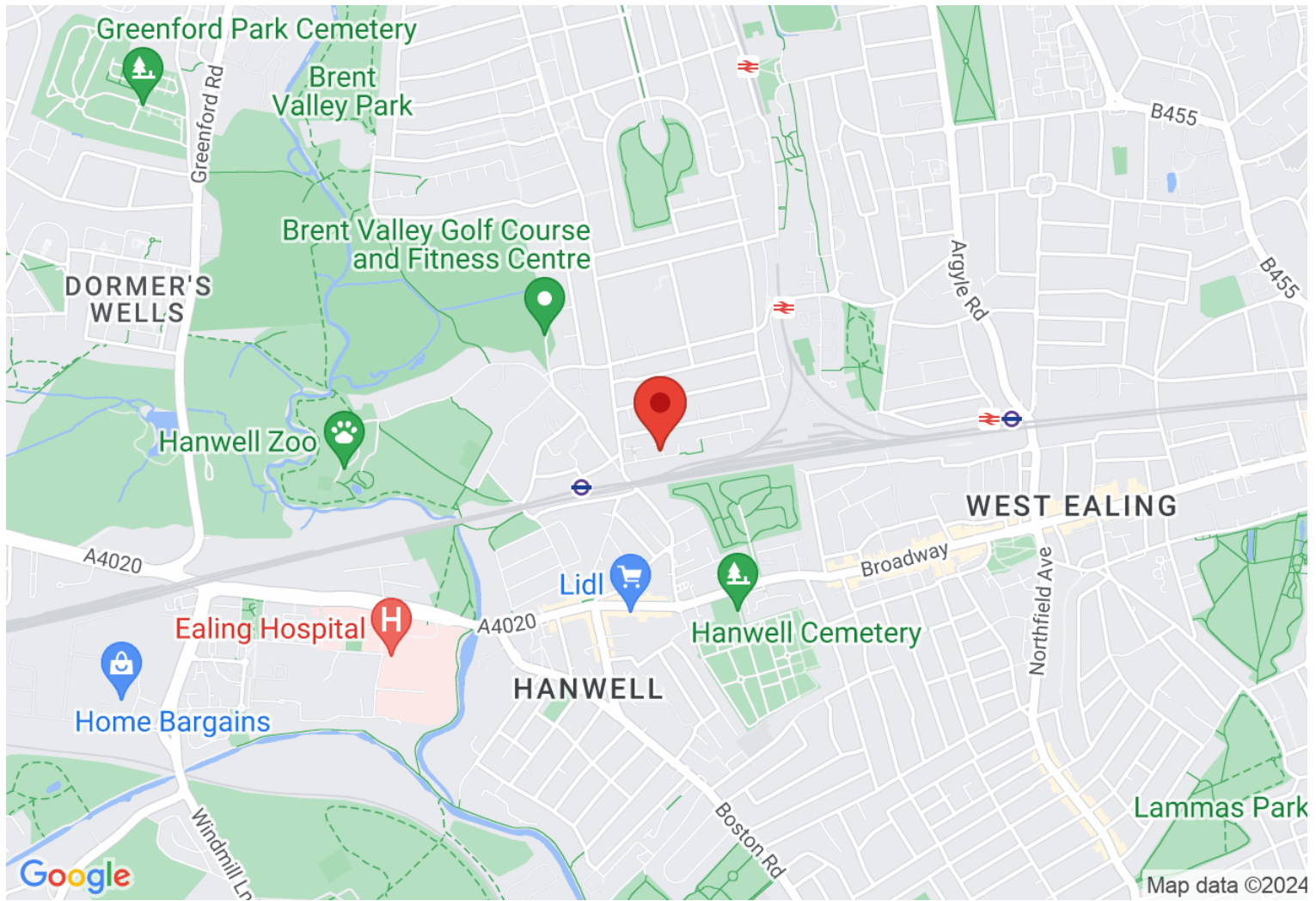
Ground Floor

Whilst every attempt has been made to ensure the accuracy of the floor plan contained here, measurements of doors, windows, rooms and any other items are approximate and no responsibility is taken for any error, omission, or mis-statement.

This plan is for illustrative purposes only and should be used as such by any prospective purchaser.

© Vizion Property Marketing Produced for Doyle Sales & Lettings

Map



VIEWING BY APPOINTMENT WITH AGENTS DOYLE SALES & LETTINGS

11 Broadway Buildings, Boston Rd, Hanwell, London, W7 3TT T: 020 8840 0171 E: info@doylesalesandlettings.co.uk W: www.doylesalesandlettings.co.uk

General: While we endeavour to make our sales particulars fair, accurate and reliable, they are only a general guide to the property and, accordingly, if there is any point which is of particular importance to you, please contact the office and we will be pleased to check the position for you, especially if you are contemplating travelling some distance to view the property.

Measurements: These approximate room sizes are only intended as general guidance. You must verify the dimensions carefully before ordering carpets or any built-in furniture.

Services: Please note we have not tested the services or any of the equipment or appliances in this property, accordingly we strongly advise prospective buyers to commission their own survey or service reports before finalizing their offer to purchase.

THESE PARTICULARS ARE ISSUED IN GOOD FAITH BUT DO NOT CONSTITUTE REPRESENTATIONS OF FACT OR FORM PART OF ANY OFFER OR CONTRACT. THE MATTERS REFERRED TO IN THESE PARTICULARS SHOULD BE INDEPENDENTLY VERIFIED BY PROSPECTIVE BUYERS OR TENANTS. NEITHER DOYLE SALES & LETTINGS NOR ANY OF ITS EMPLOYEES OR AGENTS HAS ANY AUTHORITY TO MAKE OR GIVE ANY REPRESENTATION OR WARRANTY WHATEVER IN RELATION TO THIS PROPERTY.

YOUR HOME IS AT RISK IF YOU DO NOT KEEP UP REPAYMENTS ON A MORTGAGE OR OTHER LOAN SECURED ON IT.

Written quotations available on request. All loans secured on property. Life assurance is usually required.

EPC Rating C

