



£599,950

Northfield Avenue, Northfields, W13



- 3 Double Bedrooms
- Newly Converted
- Share Of Freehold
- Excellent Transport Links
- Over 1000 Sq Ft
- Chain Free

A truly stunning and spacious, newly converted, 3 double bedroom apartment arranged over 2 floors and only a short walk to Northfields station. This impressive property certainly has the wow factor and offers a very high quality finish, neutral décor and abundance of natural light throughout. The accommodation at over 1,000 sq ft comprises shared entrance hall, stairs to first floor, 15'3 x 13'9 bay aspect front lounge, double bedroom with fitted wardrobes, luxury shower room and separate eat in kitchen/diner with built in appliances. The fabulous loft boasts 2 further double bedrooms with fitted wardrobes and separate family bathroom. Offered with share of freehold, no onward chain and shared front garden. Situated within a short walk to Northfields (Piccadilly line) and West Ealing (Elizabeth line) stations and perfect for excellent schools such as Fielding, bus routes, parks, road networks and shopping facilities. *Photos of furniture and front patio are CGI

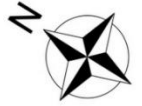


Northfield Avenue, W13 9QT

Approximate Gross Internal Area = 91.56 sq m / 986 sq ft

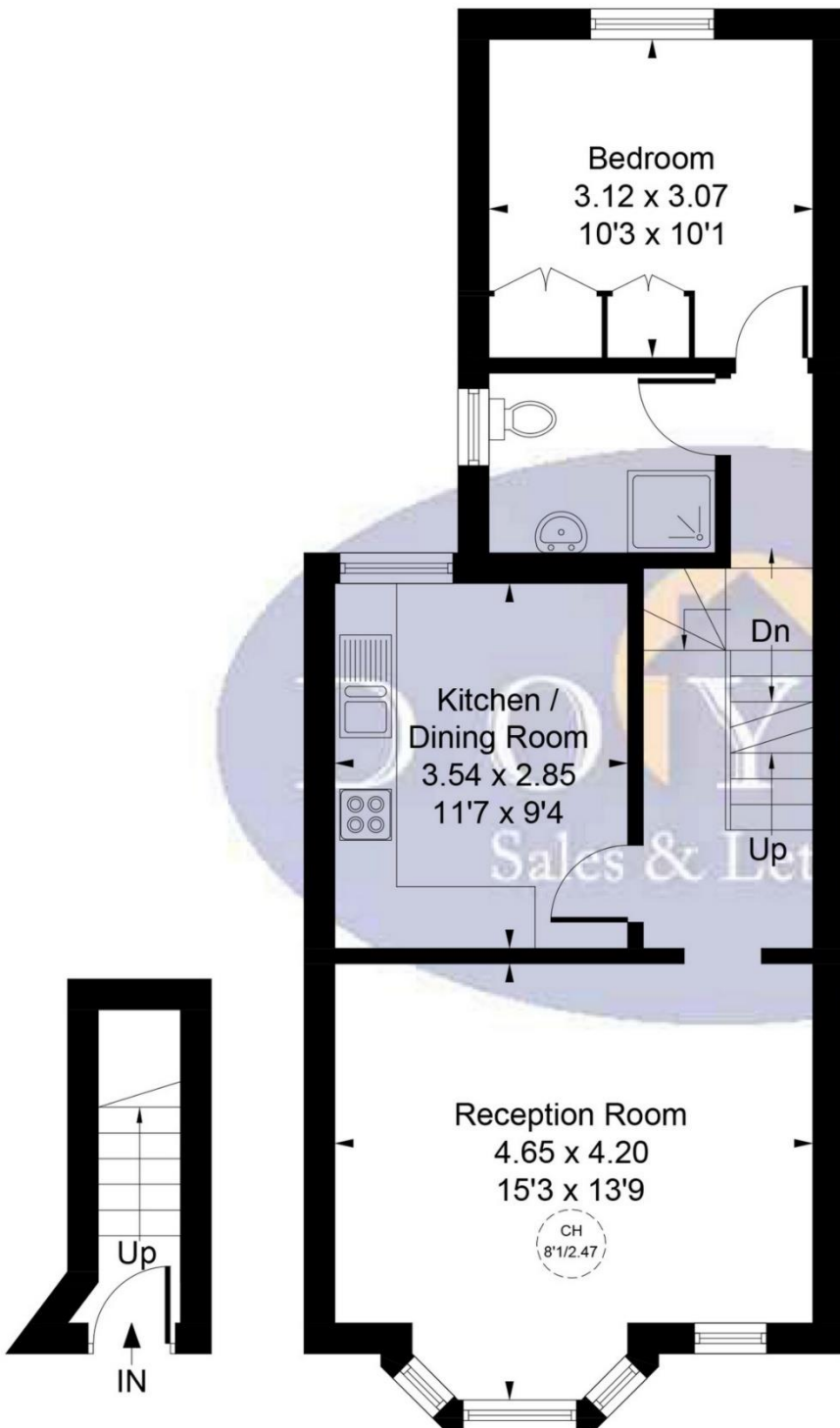
Reduced Headroom & Eaves = 6.07 sq m / 65 sq ft

Total = 97.63 sq m / 1051 sq ft



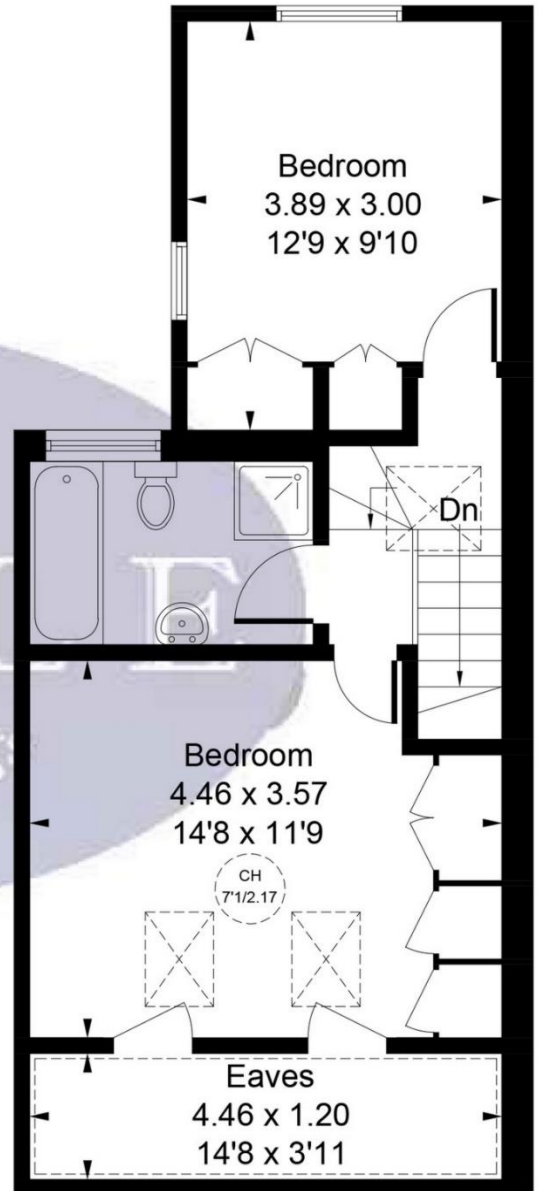
CH = Ceiling Height

= Reduced headroom below 1.5m / 5'0"



Ground Floor
2.67 sq m /
29 sq ft

First Floor
51.54 sq m / 555 sq ft



Second Floor
37.35 sq m / 402 sq ft

Reduced Headroom & Eaves
6.07 sq m / 65 sq ft

Whilst every attempt has been made to ensure the accuracy of the floor plan contained here, measurements of doors, windows, rooms and any other items are approximate and no responsibility is taken for any error, omission, or mis-statement. This plan is for illustrative purposes only and should be used as such by any prospective purchaser.

© Vizion Property Marketing Produced for Doyle Sales & Lettings

Map



VIEWING BY APPOINTMENT WITH AGENTS DOYLE SALES & LETTINGS

11 Broadway Buildings, Boston Rd, Hanwell, London, W7 3TT T: 020 8840 0171 E: info@doylesalesandlettings.co.uk W: www.doylesalesandlettings.co.uk

General: While we endeavour to make our sales particulars fair, accurate and reliable, they are only a general guide to the property and, accordingly, if there is any point which is of particular importance to you, please contact the office and we will be pleased to check the position for you, especially if you are contemplating travelling some distance to view the property.

Measurements: These approximate room sizes are only intended as general guidance. You must verify the dimensions carefully before ordering carpets or any built-in furniture.

Services: Please note we have not tested the services or any of the equipment or appliances in this property, accordingly we strongly advise prospective buyers to commission their own survey or service reports before finalizing their offer to purchase.

THESE PARTICULARS ARE ISSUED IN GOOD FAITH BUT DO NOT CONSTITUTE REPRESENTATIONS OF FACT OR FORM PART OF ANY OFFER OR CONTRACT. THE MATTERS REFERRED TO IN THESE PARTICULARS SHOULD BE INDEPENDENTLY VERIFIED BY PROSPECTIVE BUYERS OR TENANTS. NEITHER DOYLE SALES & LETTINGS NOR ANY OF ITS EMPLOYEES OR AGENTS HAS ANY AUTHORITY TO MAKE OR GIVE ANY REPRESENTATION OR WARRANTY WHATEVER IN RELATION TO THIS PROPERTY.

YOUR HOME IS AT RISK IF YOU DO NOT KEEP UP REPAYMENTS ON A MORTGAGE OR OTHER LOAN SECURED ON IT.

Written quotations available on request. All loans secured on property. Life assurance is usually required.

EPC Rating B

