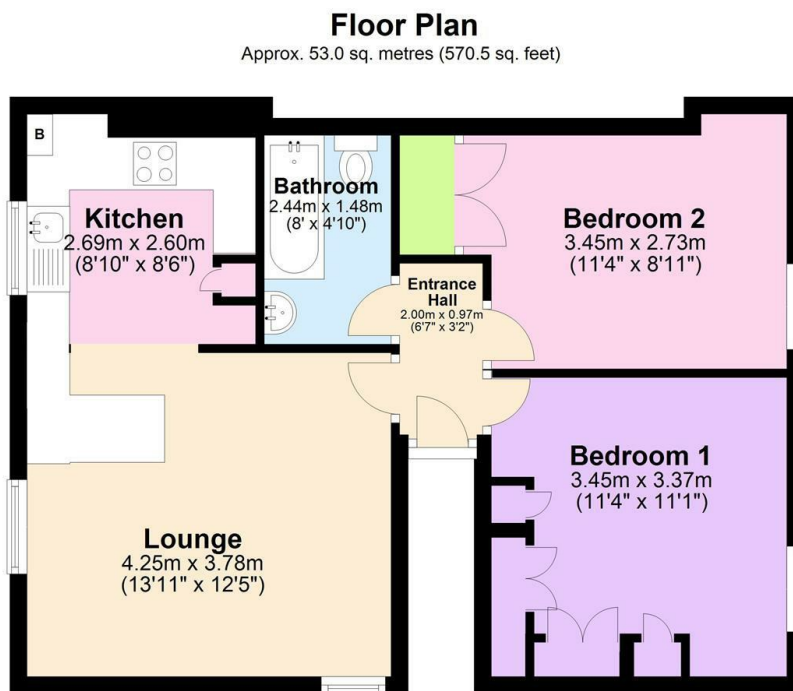




## 15B Oval Road, London, NW1 7EA

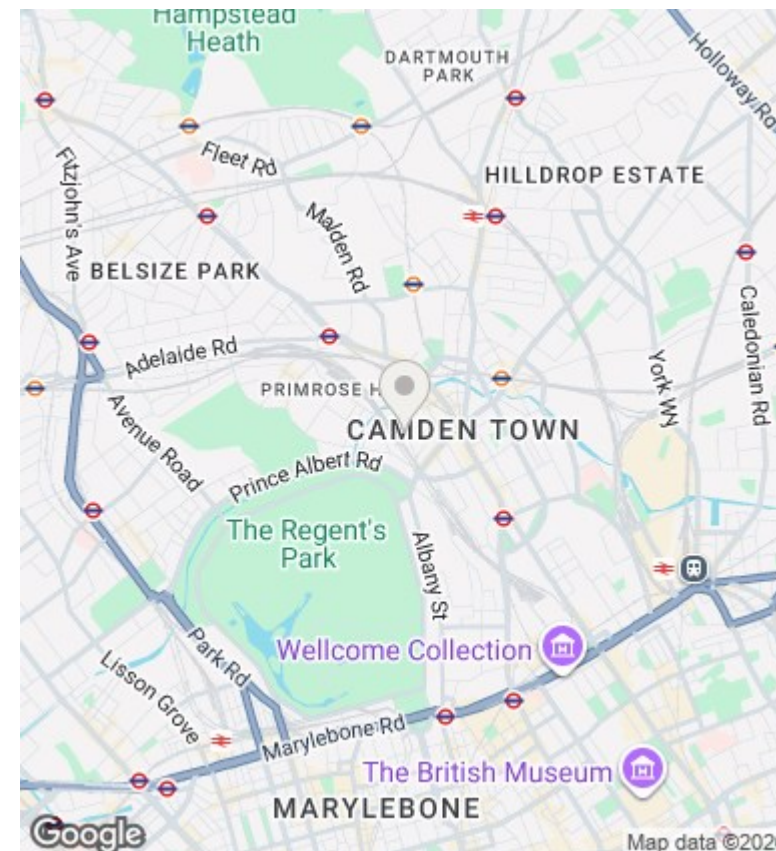
Offers In Excess Of £625,000

- Self-contained top floor flat set on the second floor of this attractive period house
- Two double bedroom
- Primrose Hill & Regents Park are also nearby
- Reception room
- Bathroom / WC
- Fully fitted kitchen
- 5 minutes walk to Camden Town Underground Station



Total area: approx. 53.0 sq. metres (570.5 sq. feet)

Illustrations are for viewing purposes only. Measurements are not to scale. Property Total and Floor Totals are Internal figures only and do not include Garden, Balconies or Terraces if any shown.  
Plan produced using PlanUp.



## Viewings

Viewings by arrangement only. Call 020 7485 0112 to make an appointment.

## Council Tax Band

D

## EPC Rating:

D

Energy Efficiency Rating		
	Current	Potential
Very energy efficient - lower running costs		
(92 plus) <b>A</b>		
(81-91) <b>B</b>		
(69-80) <b>C</b>		
(55-68) <b>D</b>	57	62
(39-54) <b>E</b>		
(21-38) <b>F</b>		
(1-20) <b>G</b>		
Not energy efficient - higher running costs		
<b>England &amp; Wales</b>	EU Directive 2002/91/EC	