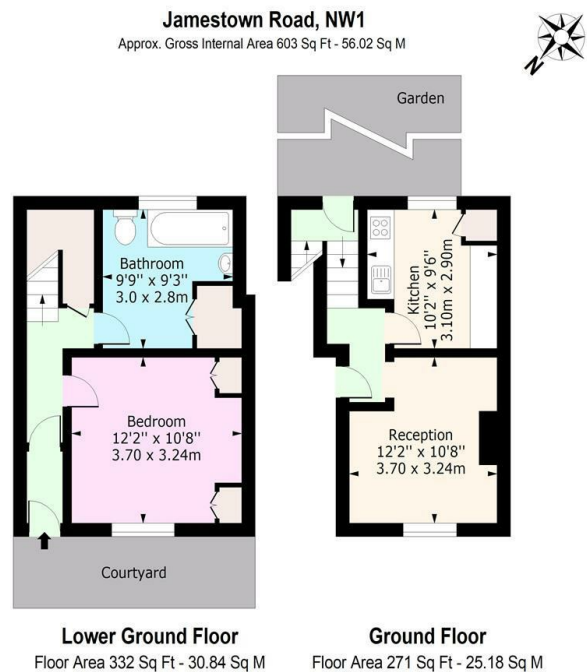




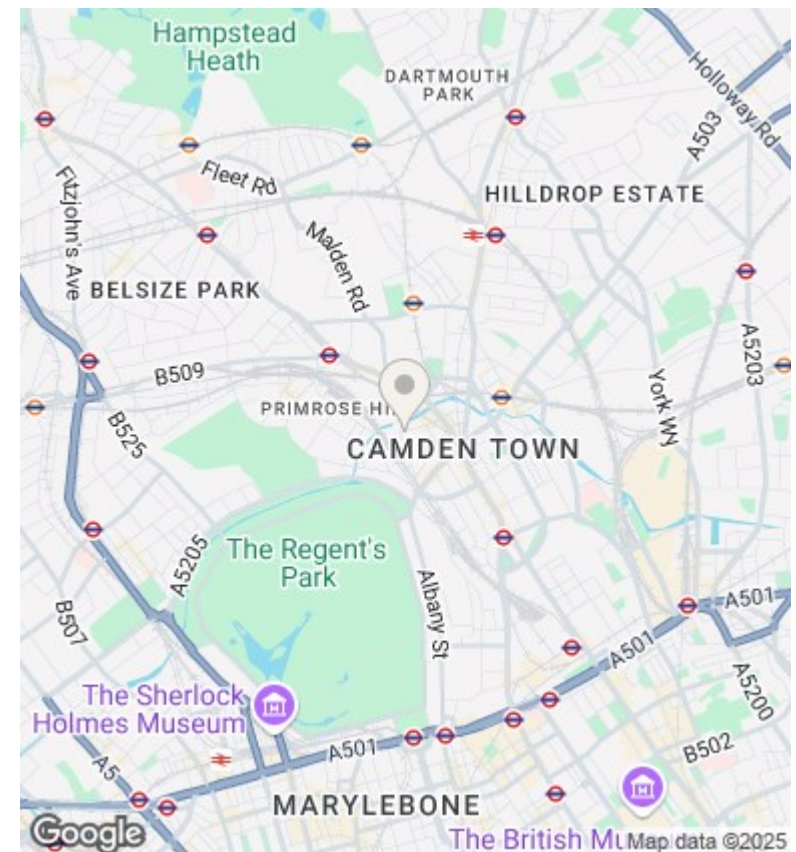
Flat A, 83 Jamestown Road, London, NW1 7DB

Offers In Excess Of £575,000

- Self-contained garden maisonette set on the ground and lower ground floor.
- One double bedroom
- 5 minutes walk to Camden Town Underground Station
- Reception room
- Bathroom / WC
- Primrose Hill & Regents Park are also nearby
- Fully fitted kitchen
- Sole use of large rear garden / front courtyard



For Illustration Purposes Only - Not To Scale



Viewings

Viewings by arrangement only. Call 020 7485 0112 to make an appointment.

Council Tax Band

C

EPC Rating:

C

Energy Efficiency Rating		
	Current	Potential
Very energy efficient - lower running costs		
(92 plus) A		
(81-91) B		
(69-80) C	70	74
(55-68) D		
(39-54) E		
(21-38) F		
(1-20) G		
Not energy efficient - higher running costs		
England & Wales	EU Directive 2002/91/EC	