

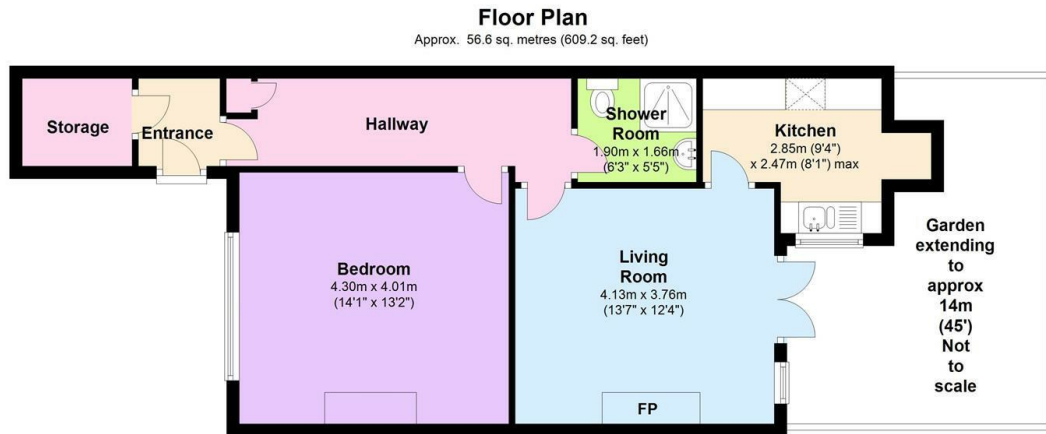


Camden Park Road, Camden Town, NW1

£2,000 PCM

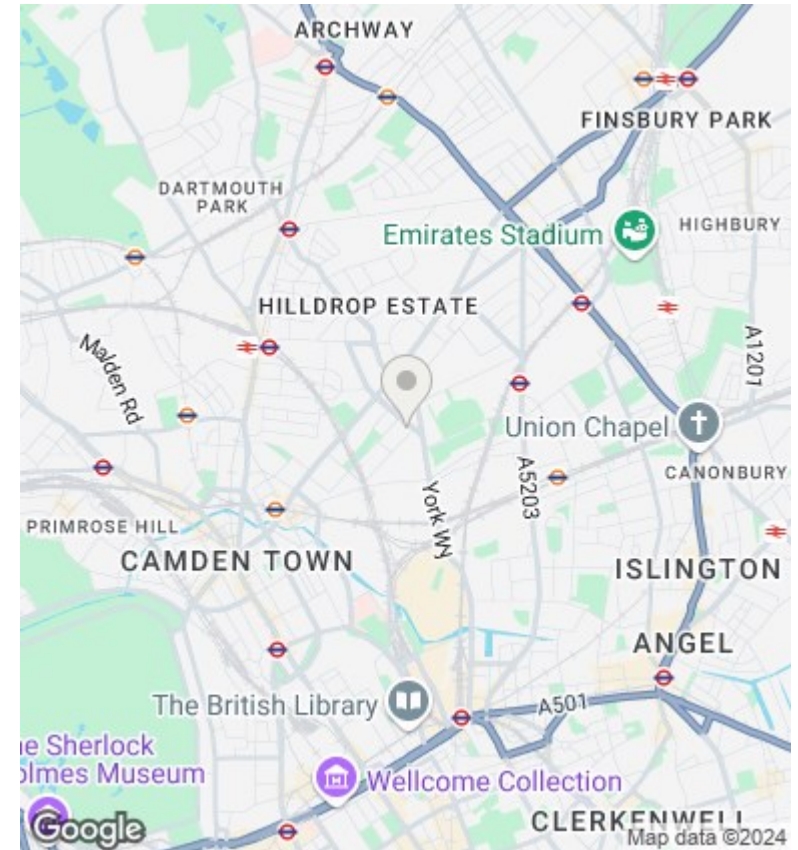
Deposit Required: £2,307

- FULLY REFURBISHED LOWER GROUND FLOOR ONE BEDROOM FLAT
- PRIVATE GARDEN
- SPACIOUS RECEPTION ROOM
- WALKING DISTANCE TO CALEDONIAN ROAD STATION
- SHOWER ROOM / WC



Total area: approx. 56.6 sq. metres (609.2 sq. feet)

Illustrations are for viewing purposes only. Measurements are not to scale.
Plan produced using PlanUp.



Viewings

Viewings by arrangement only. Call 020 7485 0112 to make an appointment.

Council Tax Band

C

EPC Rating:

C

Energy Efficiency Rating		Current	Potential
Very energy efficient - lower running costs			
(92 plus) A			
(81-91) B			
(69-80) C		69	77
(55-68) D			
(39-54) E			
(21-38) F			
(1-20) G			
Not energy efficient - higher running costs			
England & Wales		EU Directive 2002/91/EC	