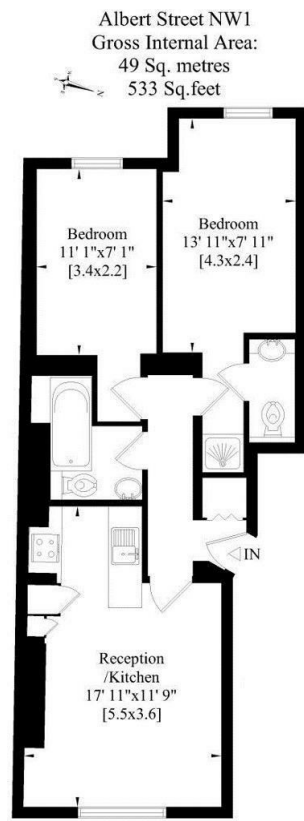


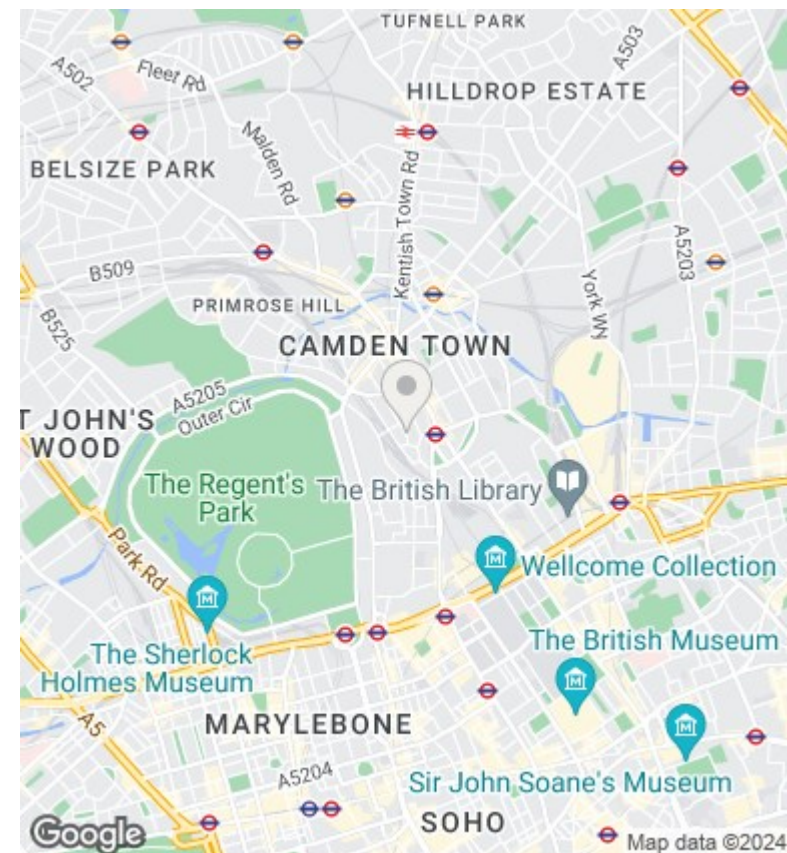
Raised Ground Floor, 11 Albert Street, London, NW1 7LU

£2,500 PCM

- Open Plan Reception / Kitchen
- Regents Park & Primrose Hill are both nearby
- Separate Shower Compartment and WC
- High Ceilings
- Three Piece Family Bathroom
- Two Double Bedrooms
- Close proximity of Mornington Crescent & Camden Town



Whilst every attempt has been made to ensure the accuracy of this floor plan, measurements of doors, windows and rooms are approximate. For identification purposes only. Not to scale.



Viewings

Viewings by arrangement only. Call 020 7485 0112 to make an appointment.

Council Tax Band

B

EPC Rating:

C

Energy Efficiency Rating		Current	Potential
<i>Very energy efficient - lower running costs</i>			
(92 plus) A			
(81-91) B			
(69-80) C			
(55-68) D			
(39-54) E			
(21-38) F			
(1-20) G			
<i>Not energy efficient - higher running costs</i>			
England & Wales	EU Directive 2002/91/EC		