



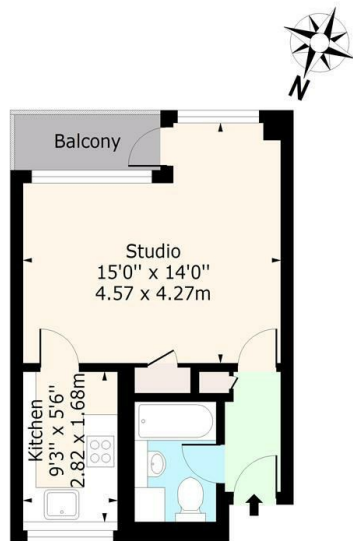
Flat 12, Merrivale Camden Street, London, NW1 0LH

Asking Price £300,000

- STUDIO APARTMENT
- TILED BATHROOM SUITE
- A SHORT WALK AWAY FROM KINGS CROSS & EUSTON
- SET ON THE FIRST FLOOR OF THIS PURPOSE BUILT BLOCK
- BUILT IN STORAGE
- APPROX. 4 MINUTE WALK TO MORNINGTON CRESCENT UNDERGROUND STATION (NORTHERN LINE)
- SEPARATE KITCHEN
- PRIVATE BALCONY

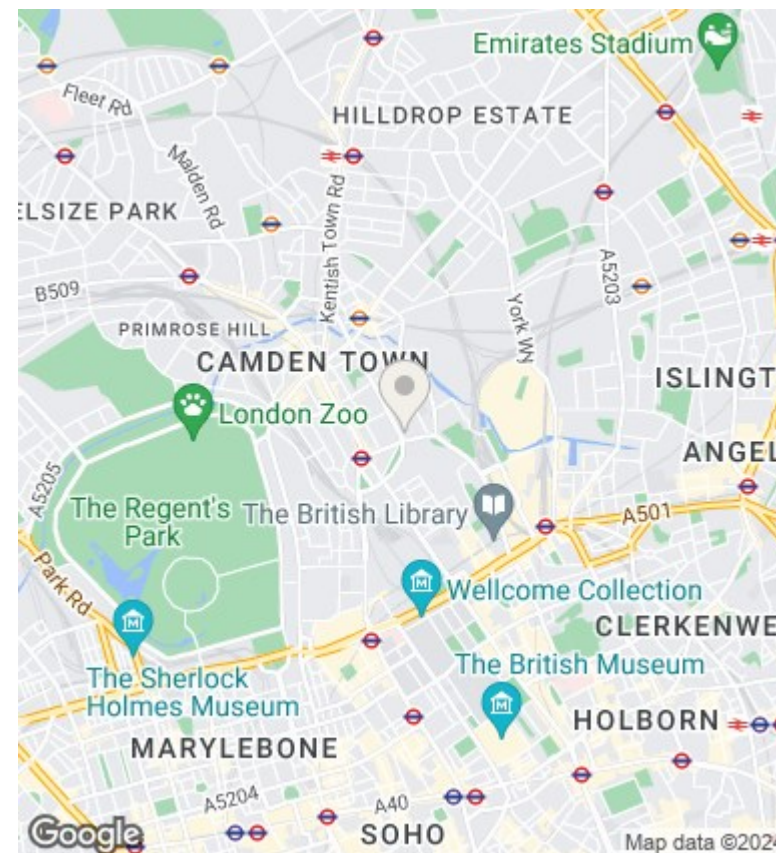
Merrivale, Camden Street, Camden, NW1 0LH

Approx. Gross Internal Area 323 Sq Ft - 30 Sq M



First Floor

For Illustration Purposes Only - Not To Scale



Viewings

Viewings by arrangement only. Call 020 7485 0112 to make an appointment.

Council Tax Band

C

EPC Rating:

C

Energy Efficiency Rating		
	Current	Potential
Very energy efficient - lower running costs		
(92 plus) A		
(81-91) B	77	78
(69-80) C		
(55-68) D		
(39-54) E		
(21-38) F		
(1-20) G		
Not energy efficient - higher running costs		
England & Wales	EU Directive 2002/91/EC	