

# 21 Village Suite, £239,950

(Other charges apply)

RICHMOND  
VILLAGES

Part of Bupa

2F

1



1



EPC -B



## 1 bedroom second floor apartment

Richmond Villages Wood Norton are pleased to offer this one-bedroom village suite, offering a secluded rural outlook. The apartment is situated within proximity to a pleasant communal lounge area. A lift gives access to communal facilities including reception, our Bredon restaurant, bar and coffee area, library, wellness spa with swimming pool, and numerous terrace areas for the warmer months.

### Specification

- Sitting Room with double glazed floor to ceiling height window and remote-controlled electric fire with decorative marble surround
- Modern fitted kitchenette with under cupboard lighting and built-in fridge with freezer compartment
- Master bedroom with double glazed window to rear aspect
- En-suite shower room with walk-in shower, fitted sanitary ware and heated towel rail
- Entrance hall with storage cupboard
- Under floor heating
- TV and satellite points
- Well stocked flower borders and lawns maintained by the Village Gardeners
- Allocated parking space for one car



\*Satellite subscription not included.

Important Notice: These particulars are intended to give a fair and substantially correct overall description. **Other fees and charges apply**, please contact the Village Advisers for further details. Properties are sold on a 125 year lease and this property has 120 years remaining.

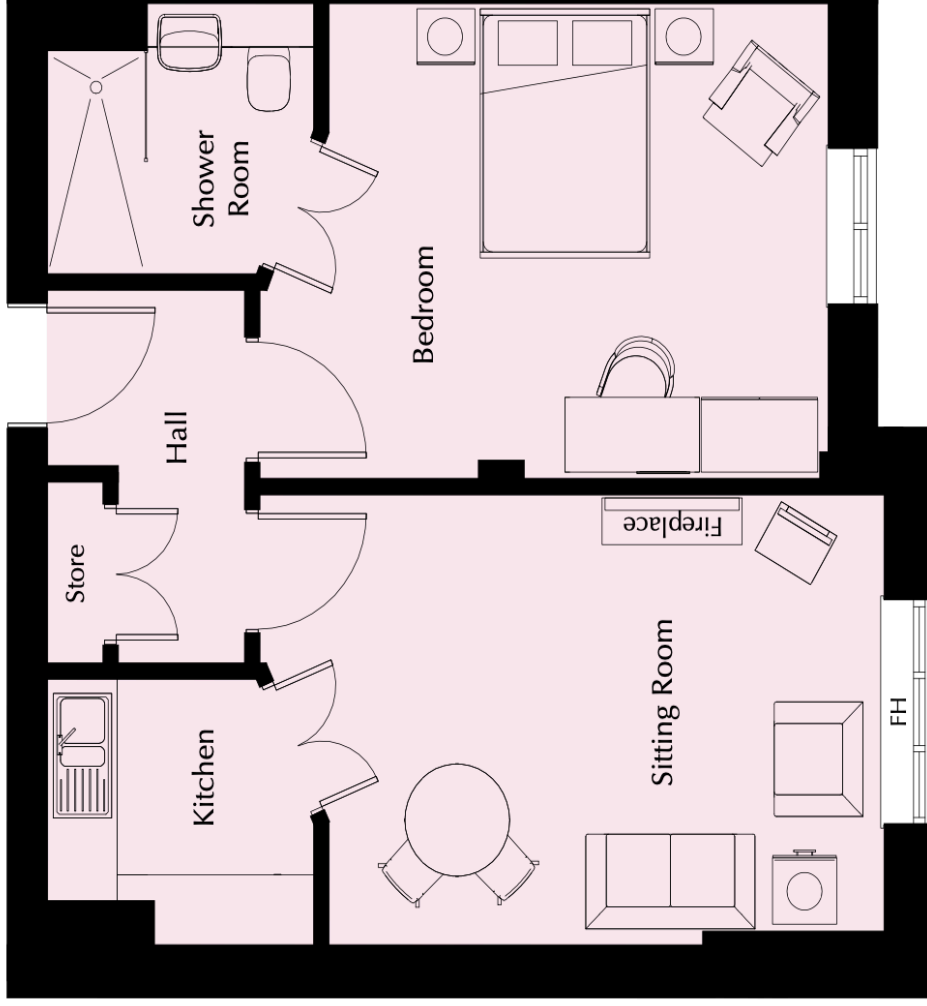
01386 366 039

woodnorton@richmond-villages.com

Richmond Villages Wood Norton,  
Evesham Road, Evesham, WR11 4TY

# 21 Village Suite

Floor 2 | 51.21m<sup>2</sup> – 551.22ft<sup>2</sup>



<b>Kitchen</b>	<b>2300mm x 2130mm</b>
<b>7'7" x 7'</b>	
<b>Sitting Room</b>	<b>4770mm x 3613mm</b>
<b>15'8" x 11'10"</b>	
<b>Bedroom</b>	<b>4898m x 3758mm</b>
<b>16'1" x 12'4"</b>	
<b>Shower Room</b>	<b>2300mm x 2180mm</b>
<b>7'7" x 7'2"</b>	

These particulars are intended to give a fair and substantially correct overall description. Measurements have been taken at 1500mm skilling height. All dimensions are approximate. Bedroom measurements include the wardrobe if applicable. Room measurements include bay windows if applicable. Furniture layout is to give an indicative impression. Although all efforts have been made to ensure its accuracy at time of print dimensions, fixtures, fittings, finishes and specifications are subject to change without notice. The properties are sold unfurnished.

