

Village Apartment 10, £189,995

RICHMOND
VILLAGES

Part of Bupa

(Other charges apply)



1



1



EPC - C



1 bedroom ground floor apartment

A spacious light ground floor 1 bedroom Village Suite over 690 sqft. The accommodation comprises of entrance hall, with storage cupboard to the right, large sitting room, kitchenette with fridge, master bedroom with en suite wet room. The apartment is situated in the main village centre. Under floor heating throughout.

Specification

- Entrance hall with storage cupboard to the right, and doors off to the sitting room and master bedroom
- Lounge with large forward facing window and a beautiful large east facing bay window to the right to create a lovely dining area.
- Fitted kitchenette with a Neff undercounter fridge. The kitchenette also has a range of wall and base units with under cupboard lighting.
- A spacious bedroom with large bay and double glazed patio doors leading out to a lovely patio.
- Wet room shower with screen. White suite comprising low level WC and wash hand basin set within a fully fitted vanity unit, fitted wall mirror, floor to ceiling tiles and heated towel rail. Under floor heating.
- Well stocked flower borders and lawns maintained by the Village Gardeners.
- Allocated parking space.



Important Notice: These particulars are intended to give a fair and substantially correct overall description. Other fees and charges apply, please contact the Village Advisers for further details. Properties are sold on a 125 year lease and this property has 121 years remaining.

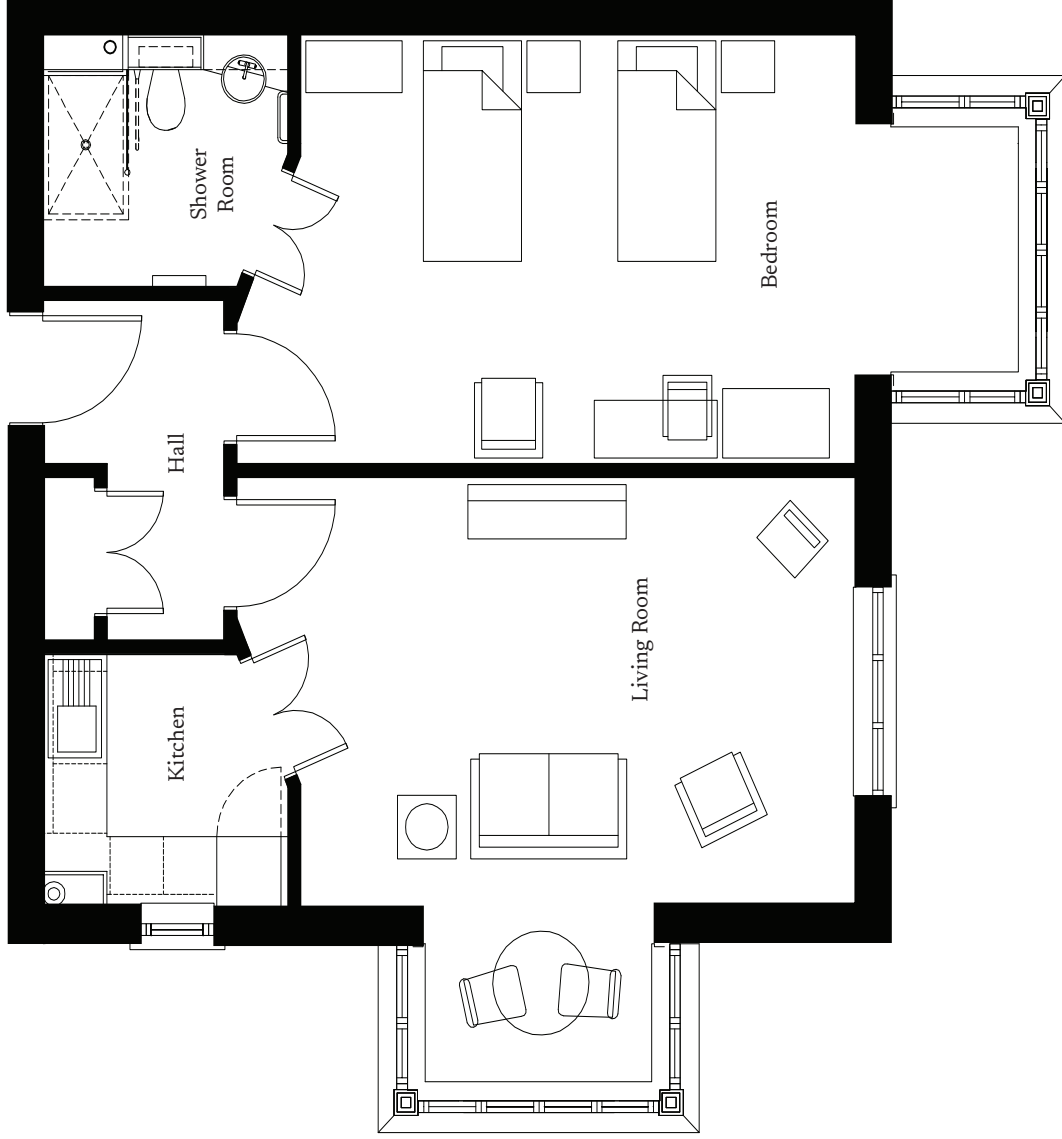
01332 794 300

astonontrent@richmond-villages.com

Richmond Villages Aston-on-Trent,
Richmond Drive, Aston-on-Trent, Derbyshire, DE72 2EA

Village Apartment 10

Ground Floor | 64.08m² - 690ft²



Kitchen	2300mm x 2180mm
	7'7" x 7'2"
Living Room	5229mm x 5200mm
	17'2" x 17'1"
Bedroom	6719mm x 3710mm
	22'1" x 12'2"
Shower Room	2300mm x 2180mm
	7'7" x 7'2"

These particulars are intended to give a fair and substantially correct overall description. Measurements have been taken at 1500mm ceiling height.

All dimensions are approximate. Bedroom measurements include the wardrobe if applicable. Room measurements include bay windows if applicable. Furniture layout is to give an indicative impression. Although all efforts have been made to ensure its accuracy at time of print dimensions, fixtures, fittings, finishes and specifications are subject to change without notice.

The properties are sold unfurnished.

