

75 Millstream Mews



RICHMOND
LETCOMBE REGIS

Part of Bupa



Find us on

rightmove 

75 Millstream Mews

Richmond Letcombe Regis, South Street, Letcombe Regis, Oxfordshire OX12 9JY

£540,000





75 Millstream Mews is a bright and airy south-west facing apartment. The accommodation comprises an entrance hall with large storage cupboard, living room, kitchen/diner and two double bedrooms, the master with en-suite facilities.

Entrance Hall

Hallway with large storage cupboard. Utility room.

Sitting Room / Dining Room

The lovely light room has French doors to the south-west facing patio. Electric fire with Bath stone effect surround, TV and satellite points* and radiator. Glazed doors to:

Kitchen

Range of fully fitted wall and base units with under-cupboard lighting, stainless steel sink and drainer, built-in Neff double oven and Induction hob, integrated Bosch appliances to include fridge freezer and dishwasher. Spotlights to ceiling and tiled floor.

Bedroom 1

A lovely light room with a wall of fitted wardrobes. TV and satellite points and radiator*. Door to:

En-suite Shower Room

Wet room style shower with screen, Heated towel rail. white suite comprising low level WC and wash hand basin

set within a fully fitted vanity unit with Corian shelf, fitted wall mirror and spotlights. Heated towel rail.

Bedroom 2

Double glazed window. Radiator.

Shower Room

Tiled shower cubicle. White suite comprising low level WC and wash hand basin set within a fully fitted vanity unit with Corian shelf, fitted wall mirror and spotlights. Heated towel rail.

Utility Room

Fully tiled. Counter with sink. Various wall and base units.

Outside

South-west facing patio area in enclosed by gardens. Parking space.

Gas central heating throughout and fully carpeted.

* Satellite subscription not included.

Richmond Letcombe Regis is an award-winning retirement village set within a beautiful rural location in South Oxfordshire. The village has a wealth of facilities which include a restaurant with piano bar and external terrace overlooking the lake, a fully equipped wellness spa with pool, steam room, sauna, gym, hair salon and treatment rooms.

Important Notice: These particulars are intended to give a fair and substantially correct overall description. All dimensions are approximate. The properties are sold unfurnished.

Other fees and charges apply, please contact the Village Advisers for further details.

Properties are sold on a 125 year lease and this property has 119 years remaining.

01235 773970

**www.richmond-villages.com/letcombe
info@richmond-villages.com**

Richmond Letcombe Regis, South Street,
Letcombe Regis, Oxfordshire OX12 9RG

75 Millstream Mews

Ground Floor

Kitchen

4380mm x 2300mm
14'4" x 7'7"

Sitting Room

9001mm x 3949mm
29'6" x 12'11"

Bedroom 1

6195mm x 3507mm
20'4" x 11'6"

Shower Room

2300mm x 2050mm
7'7" x 6'9"

Bedroom 2

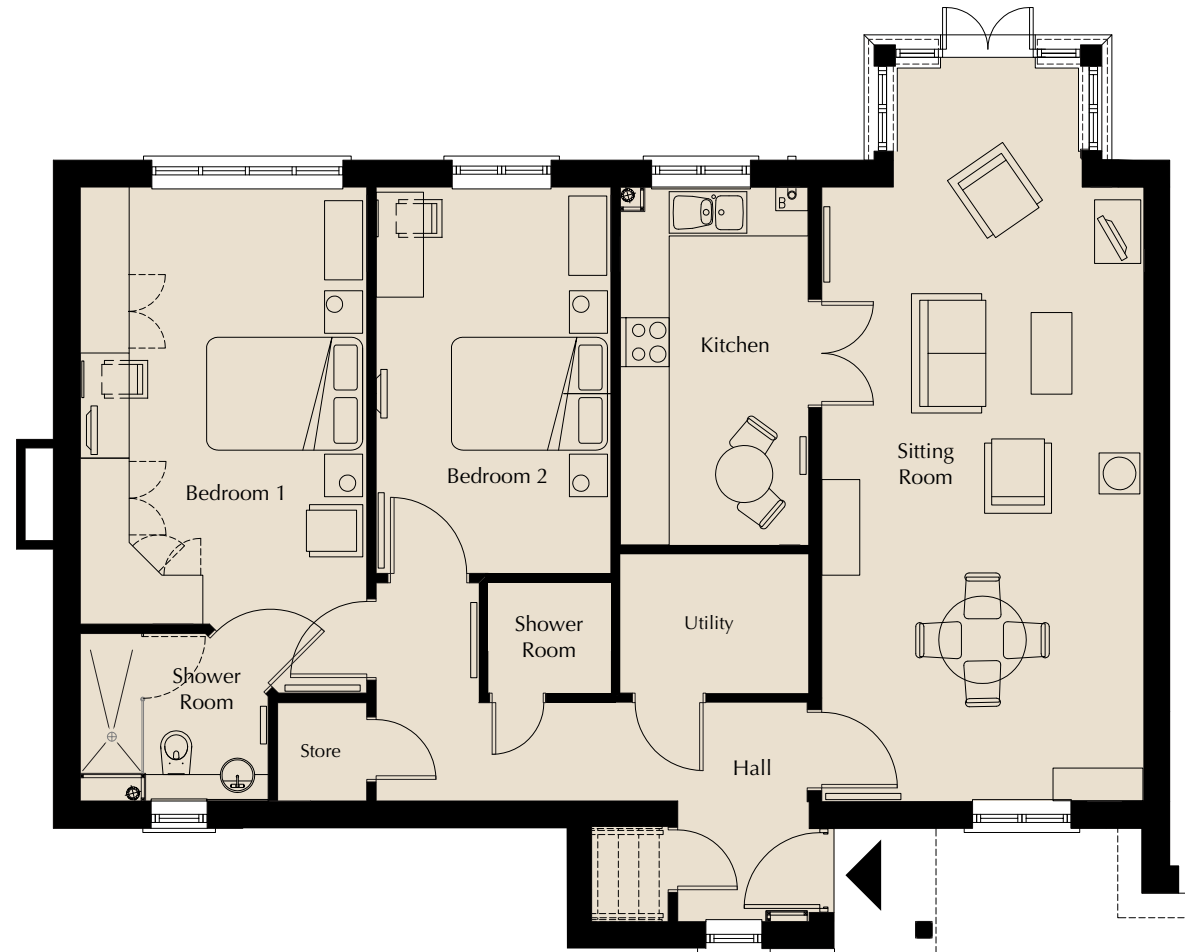
4730mm x 2988mm
15'6" x 9'10"

Bathroom

1750mm x 1700mm
5'9" x 5'7"

Utility

2300mm x 1700mm
7'7" x 5'7"



These particulars are intended to give a fair and substantially correct overall description.

Measurements have been taken at 1500mm skeliling height.

All dimensions are approximate. Bedroom measurements include the wardrobe if applicable. Room measurements include bay windows if applicable.

Furniture layout is to give an indicative impression. Although all efforts have been made to ensure its accuracy at time of print dimensions, fixtures, fittings, finishes and specifications are subject to change without notice.

The properties are sold unfurnished.

