

75 Millstream Mews, £635,000

(Other charges apply)

RICHMOND
VILLAGES

Part of Bupa



2



2



EPC - C



2 bedroom ground floor apartment

Located in a tranquil, secure setting, this spacious 2-bedroom, ground floor, independent living apartment offers a perfect balance of privacy and social opportunities. The generous garden space is ideal for those who enjoy the outdoors and is perfect for pottering, outdoor dining or simply soaking up the sun.

Specification

- You will enter the apartment into an open hallway, which provides access to both the living room, bedrooms and utility room.
- The living room has south-west, double-glazed French doors to the rear, leading to a laid patio. There is a stone surround that houses an electric fire and radiators.
- The kitchen has a range of fully fitted wall and base units with under cupboard lighting. Built-in Neff double oven and induction hob. Integrated appliances include fridge freezer and dishwasher.
- The main bedroom has a south-west facing, secondary glazed window and fitted wardrobes.
- The main bedroom has an en-suite shower room.
- The second bedroom has a south-west facing window.
- There is a further shower room with enclosed shower, suite comprising of low-level WC and hand wash basin.
- TV and satellite points*.
- Allocated parking space for one car.

*Satellite subscription not included.

Important Notice: These particulars are intended to give a fair and substantially correct overall description. Other fees and charges apply, please contact the Village Advisers for further details. Properties are sold on a 125 year lease and this property has 110 years remaining.



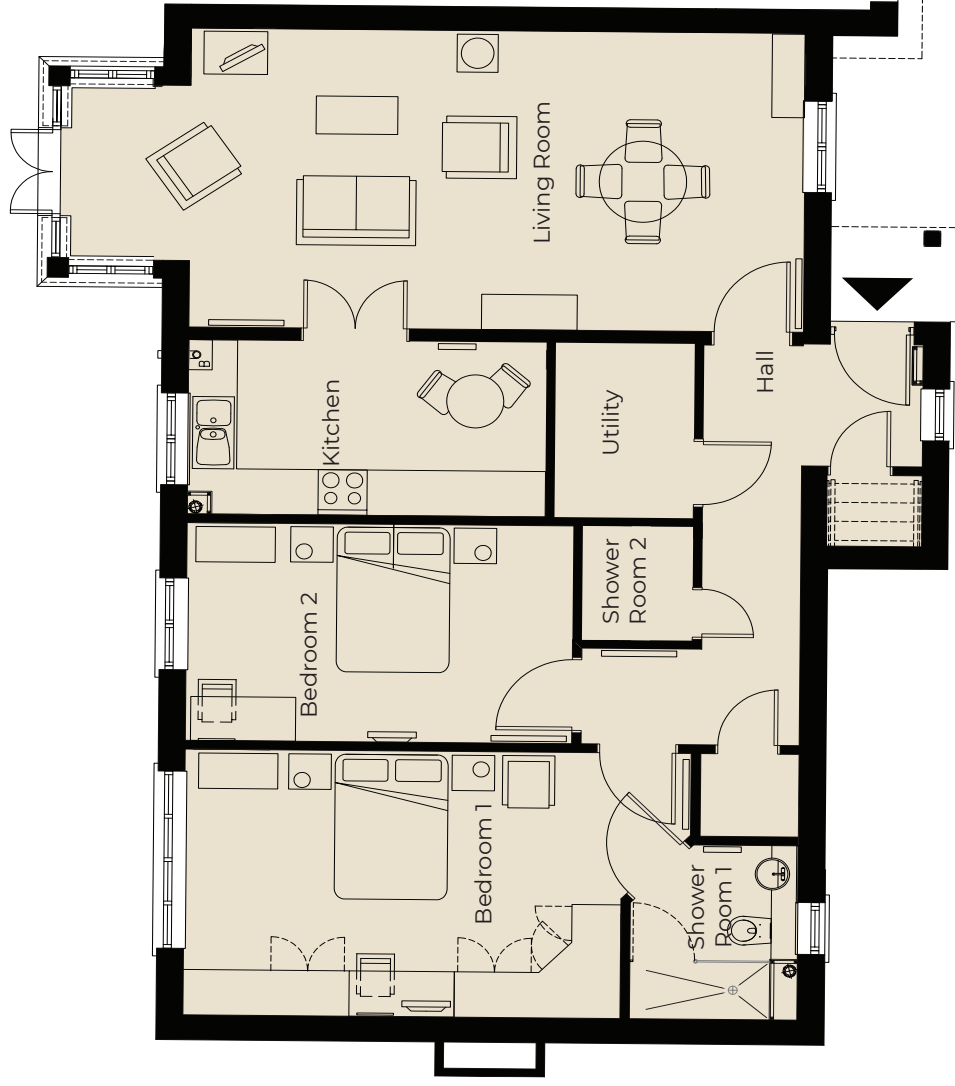
01235 773970

letcomberegis@richmond-villages.com

Richmond Villages Letcombe Regis,
South Street, Letcombe Regis, Oxfordshire OX12 9RG

75 Millstream Mews

Ground Floor



Kitchen

2300mm x 4380mm

7'7" x 14'4"

Living room

3949mm x 9001mm

12'11" x 29'6"

Bedroom 1

3507mm x 6195mm

11'6" x 20'4"

Shower Room

2300mm x 2050mm

7'7" x 6'9"

Bedroom 2

2988mm x 4730mm

9'x10" x 15'6"

Bathroom

2300mm x 1700mm

Utility

2280mm x 1480mm

7'5" x 4'10"

These particulars are intended to give a fair and substantially correct overall description.

Measurements have been taken at 1500mm skelling height.

All dimensions are approximate. Bedroom measurements include the wardrobe if applicable. Room measurements include bay windows if applicable.

Furniture layout is to give an indicative impression. Although all efforts have been made to ensure its accuracy at time of print dimensions, fixtures, fittings, finishes and specifications are subject to change without notice.

The properties are sold unfurnished.

